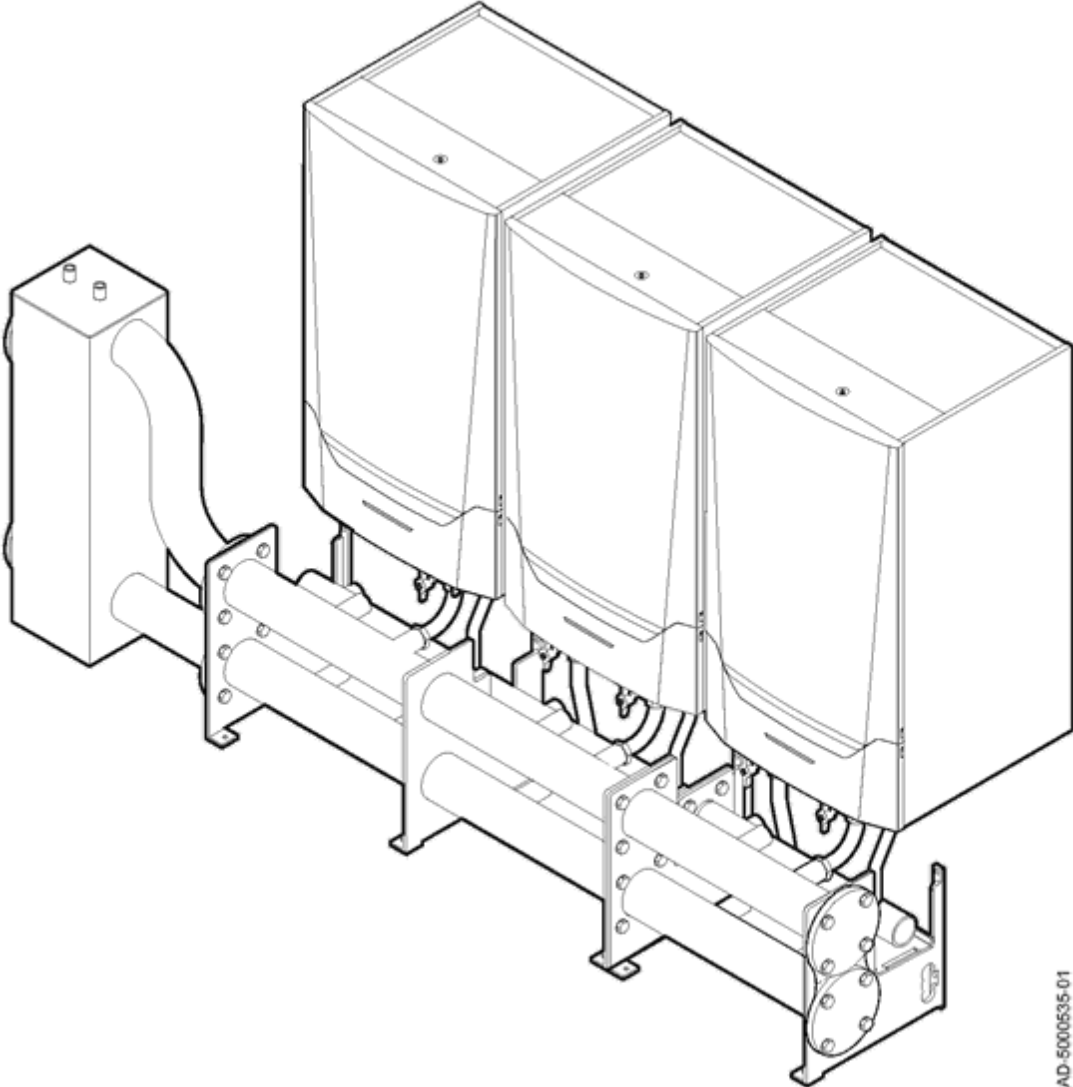


7699493 - v.01 - 08032019



AD-5000535-01

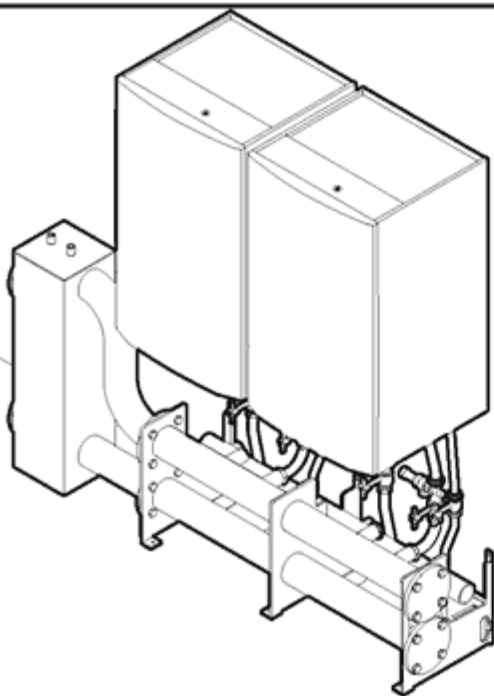
Assembly instructions

Cascade system

page 1

1

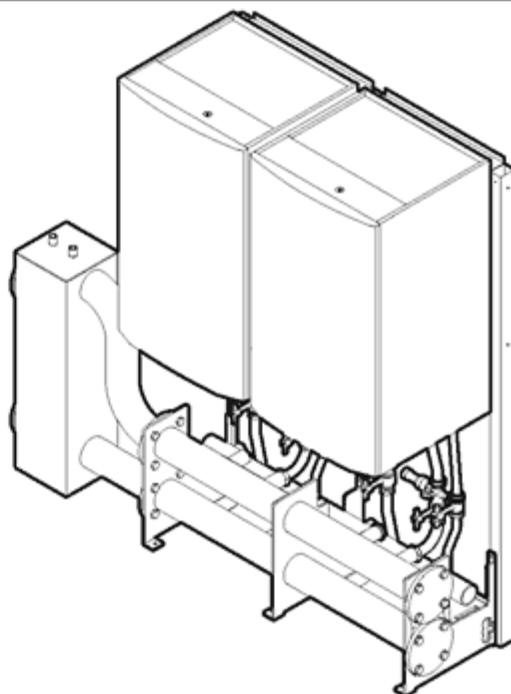
LW



AD-5000536-01

2

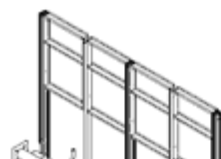
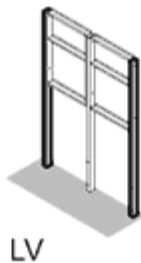
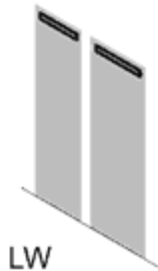
LV



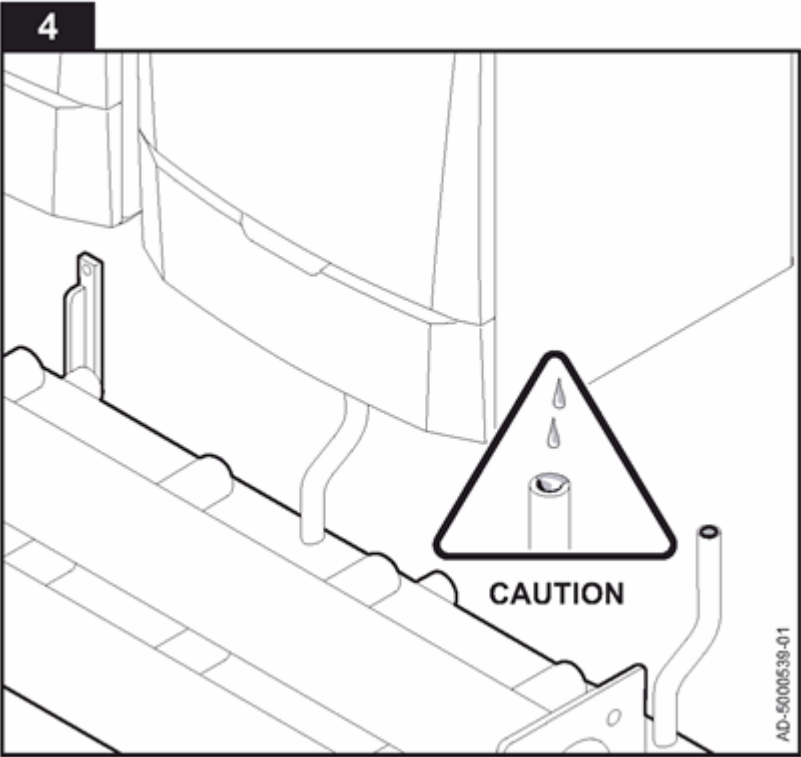
AD-5000537-01

3

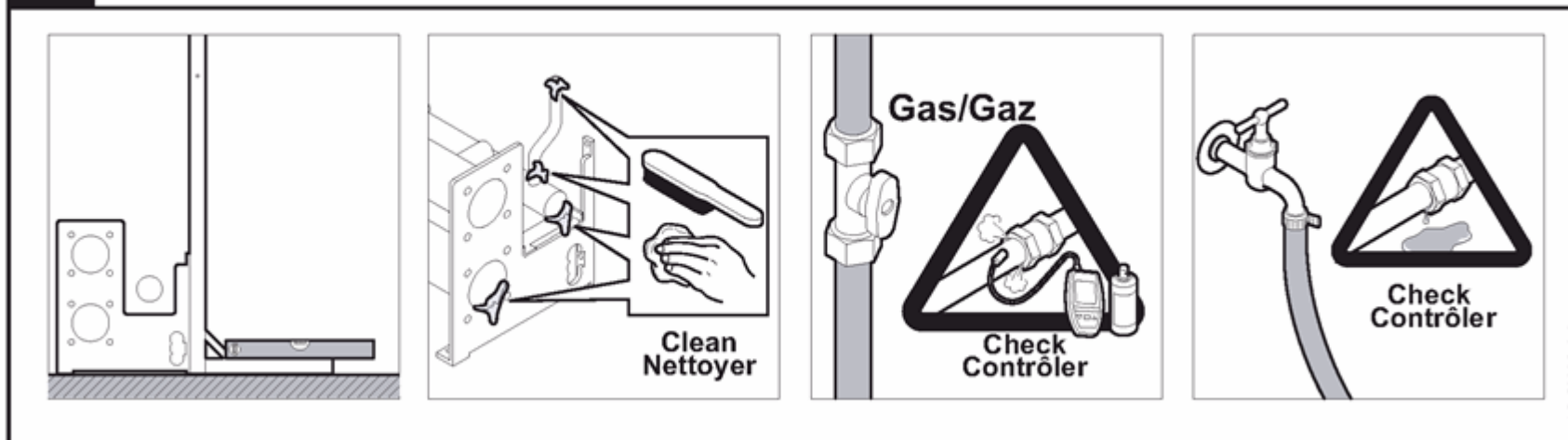
OPTIONS



ATTENTION



5

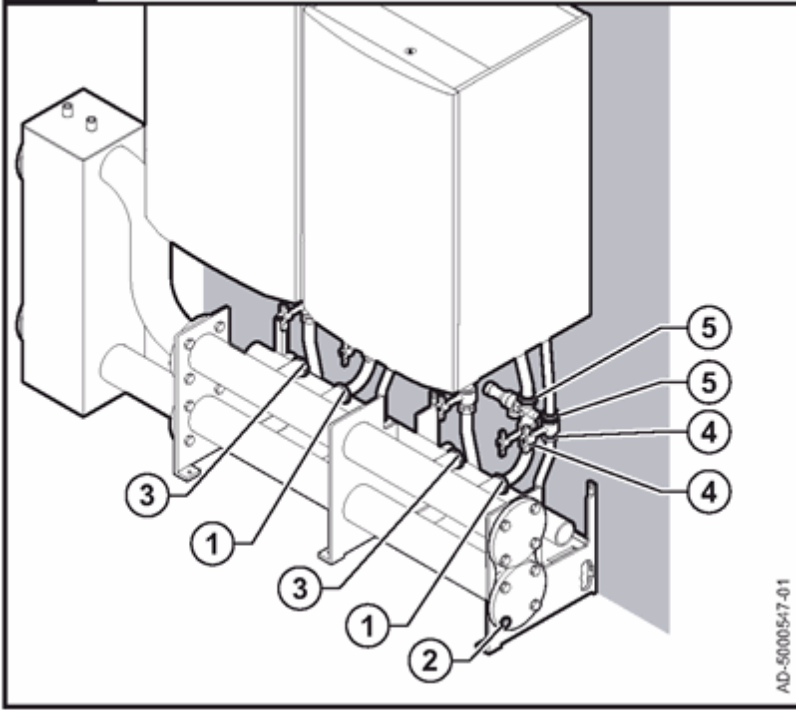


* The leak test determines the correct connection of the cascade system. The torques specified are intended as a guideline

page 3

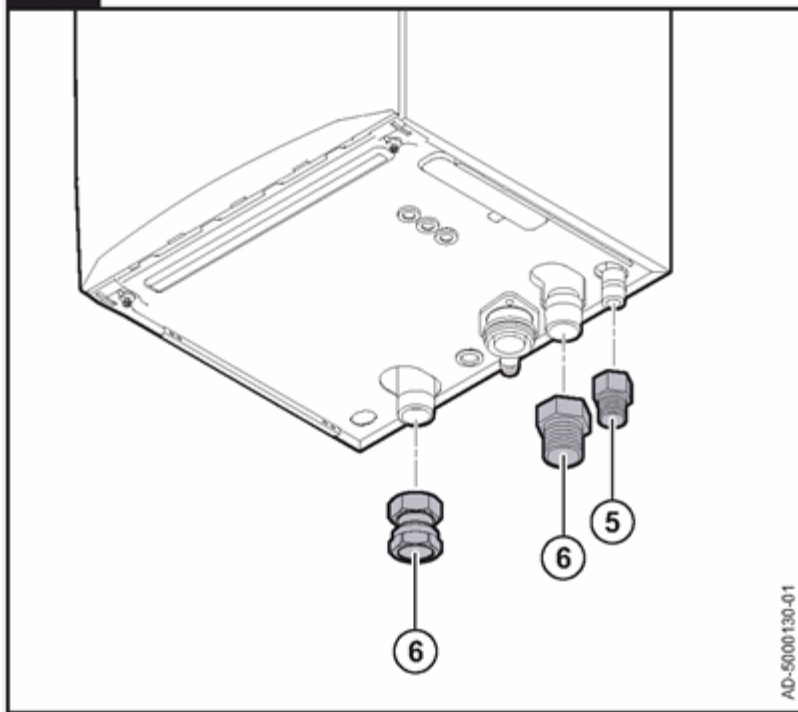
TIGHTENING TORQUE GUIDELINES

6



AD-5000547-01

7



1 30 Nm

2 40 Nm

3 15 Nm

4 Tighten hand tight and then tighten by a further $\frac{3}{4}$ turns.

5 30 Nm

6 50 Nm

page 4

General remarks

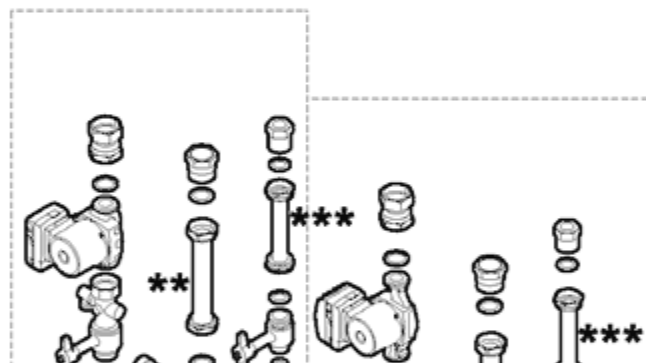
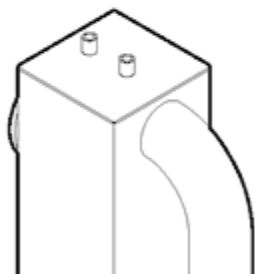
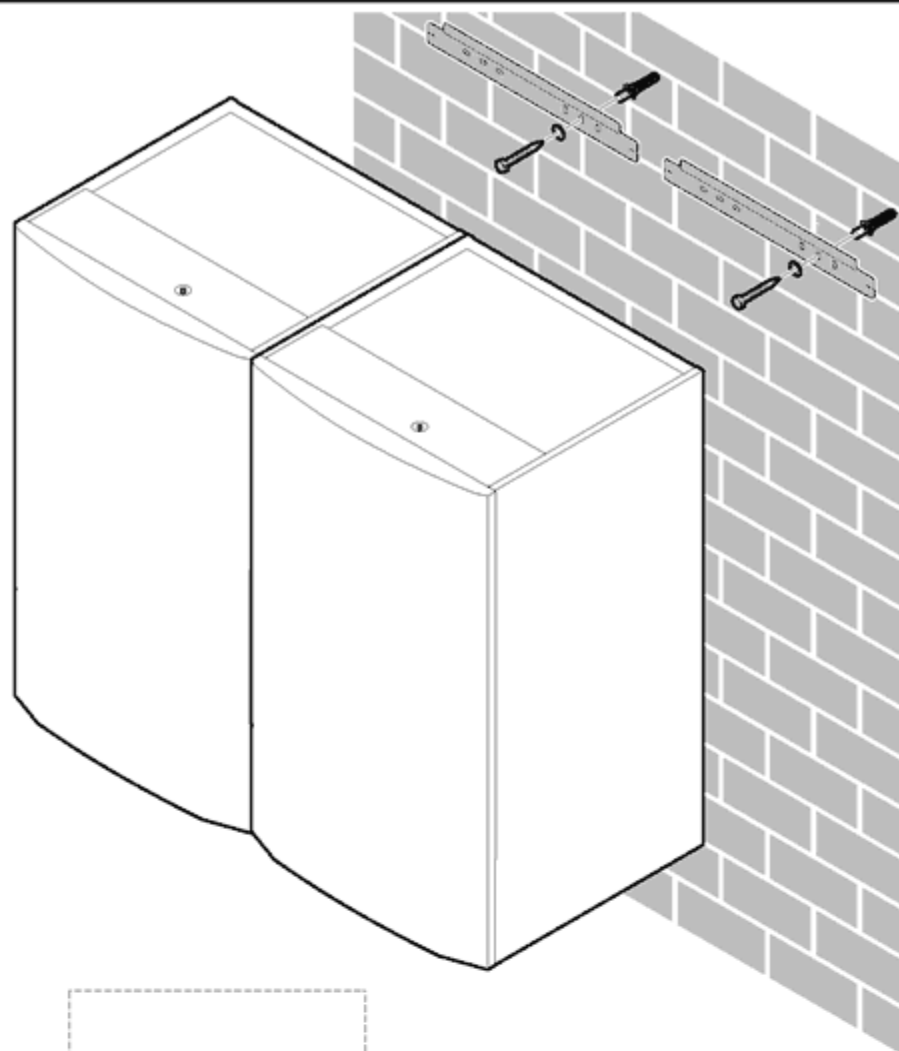
Preferably approved sealing material should be used.

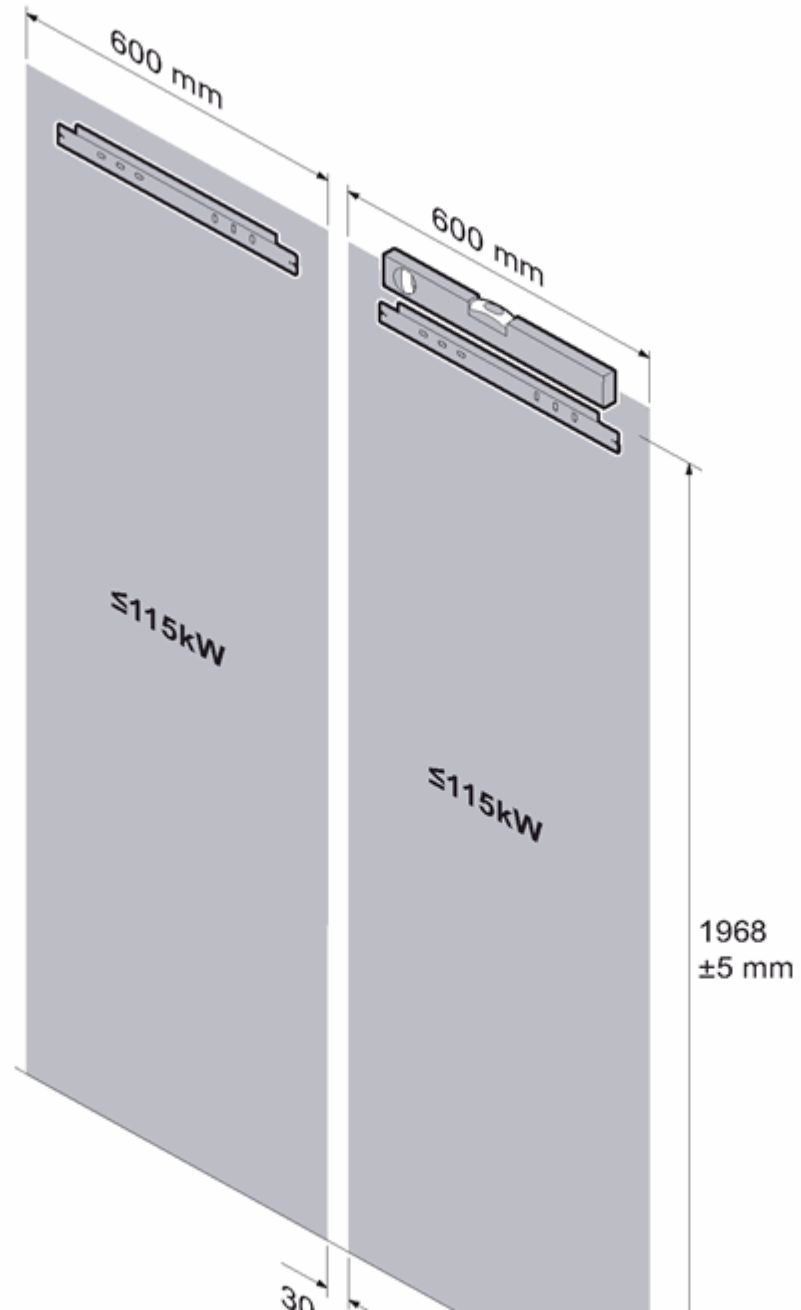
Pressure testing

After assembling the boilers and the cascade system, a pressure-test will visualise water tightness of the cascade system.

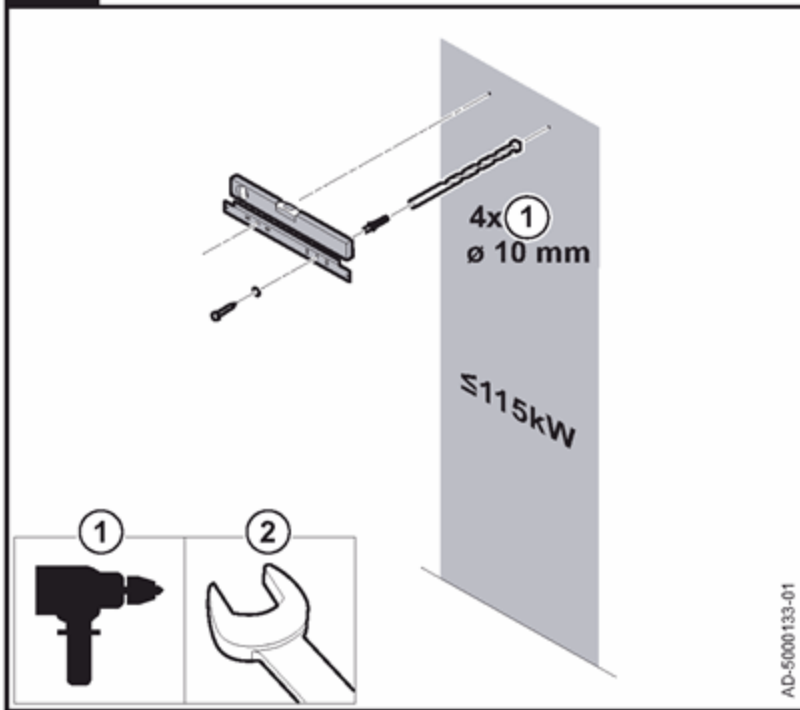
The flow and return connections must be blanked off. Apply a cold water pressure of 1.3 x working pressure.

page 5

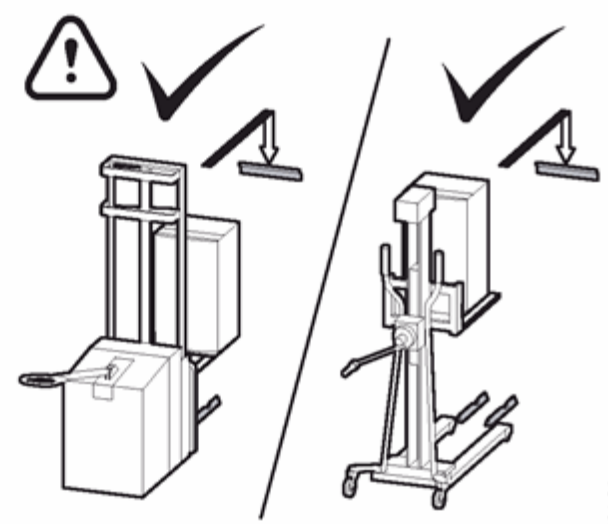
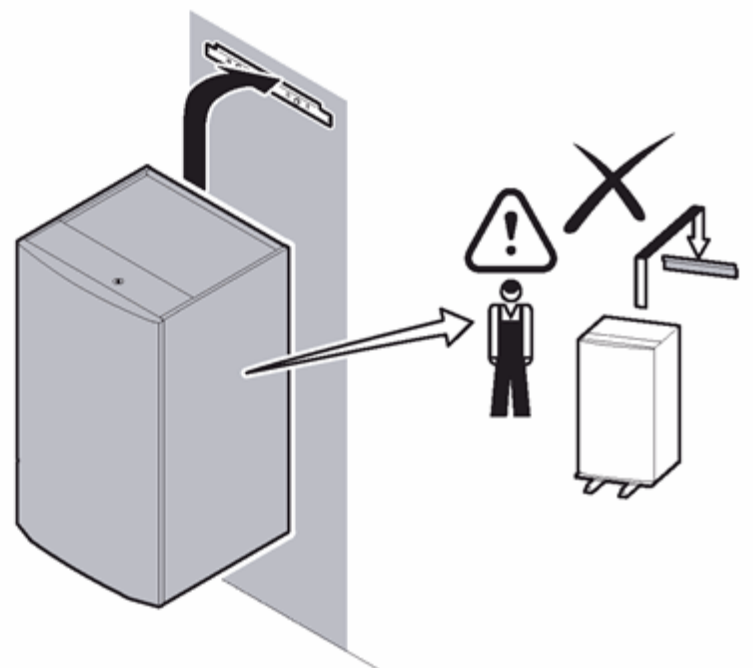




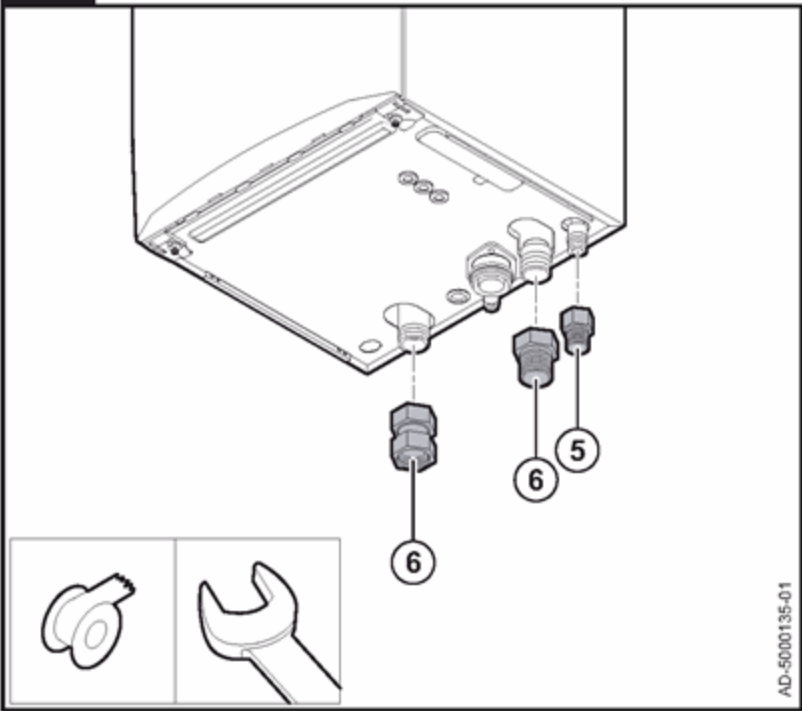
10



page 7

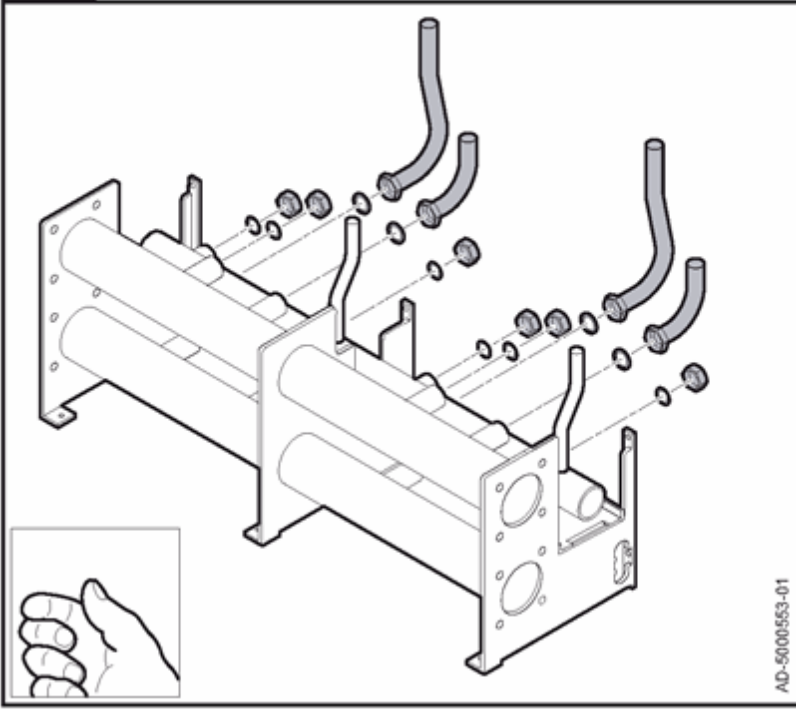


12



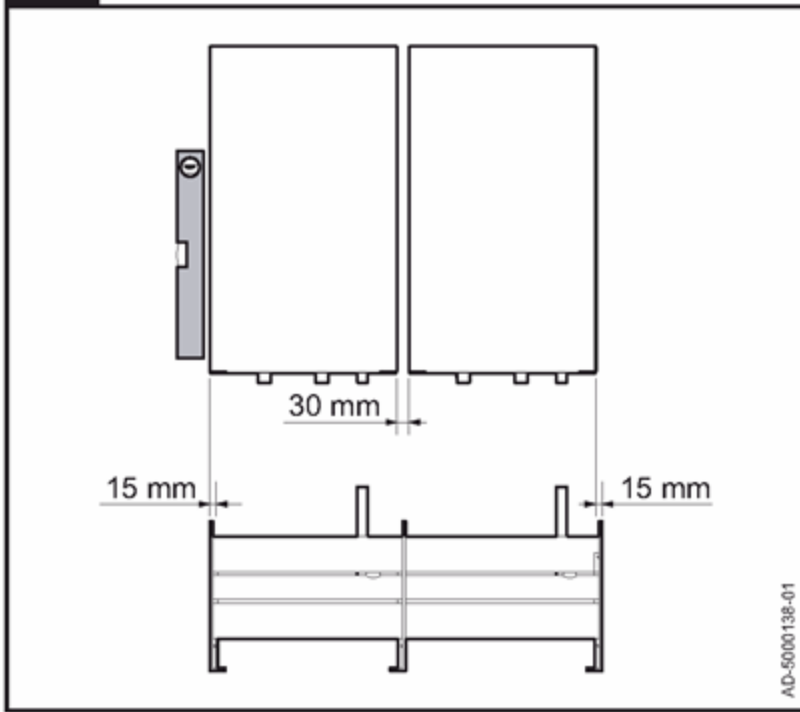
AD-5000135-01

13

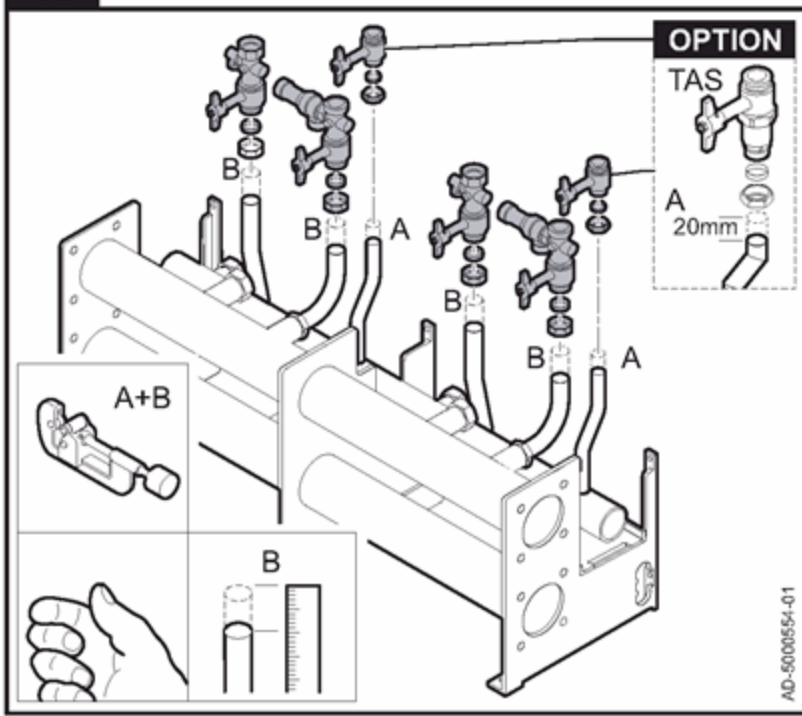


AD-5000553-01

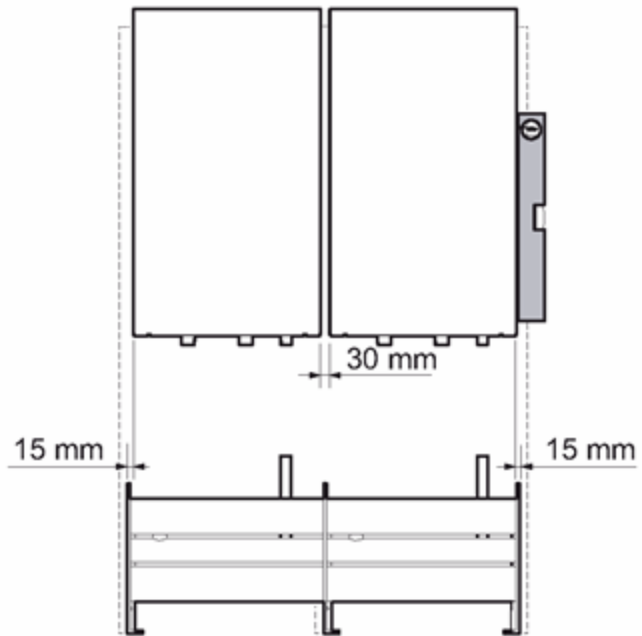
14



15

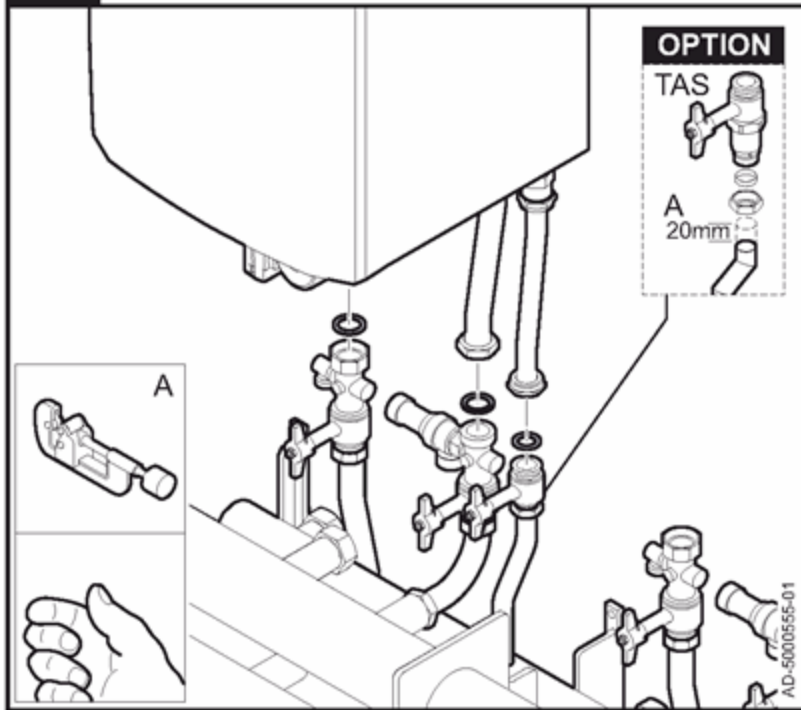


16

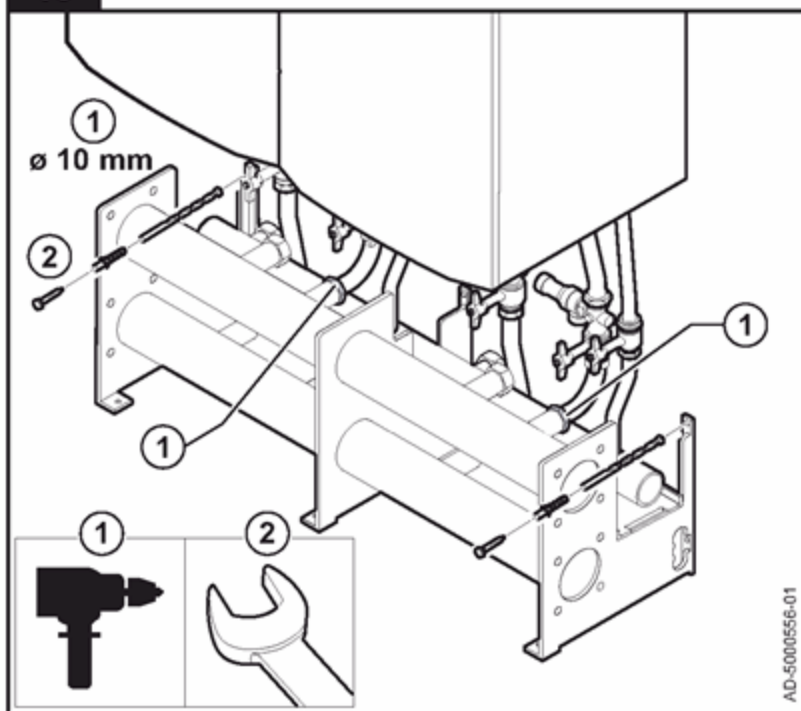


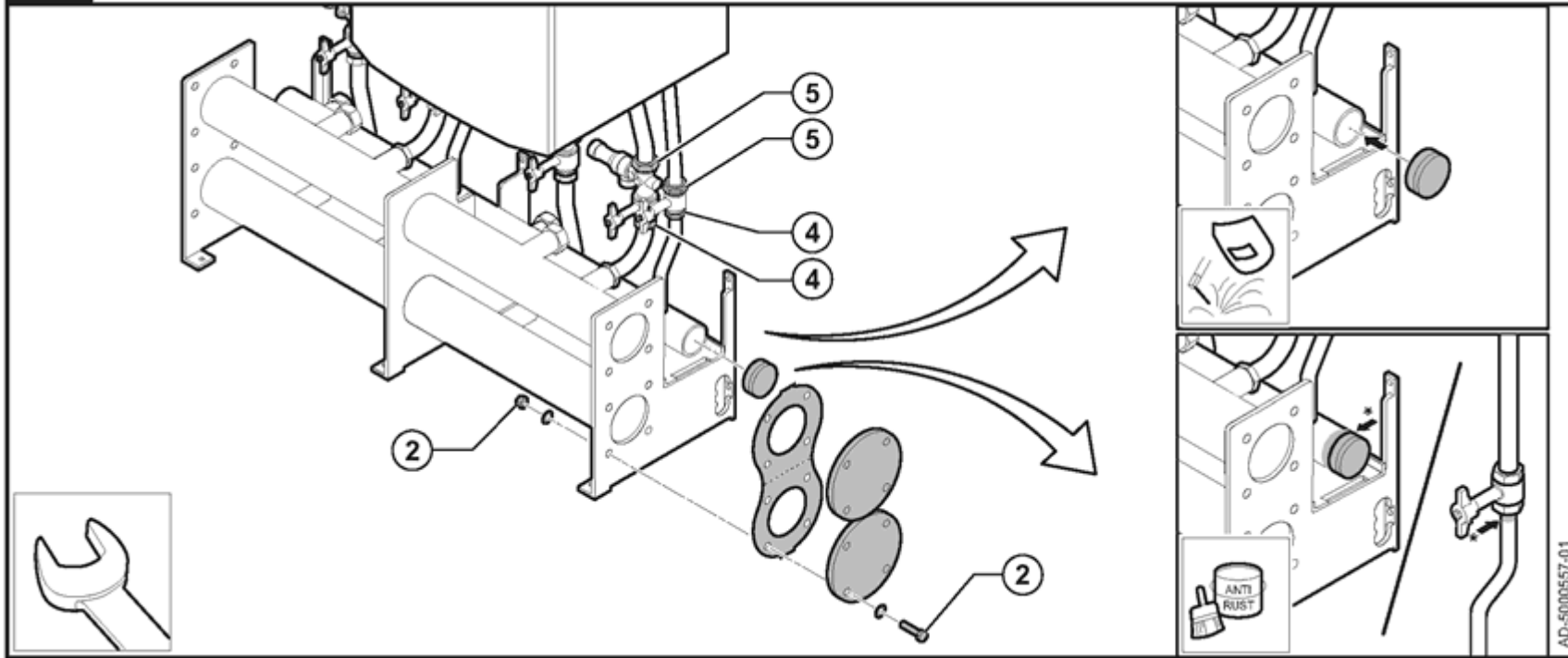
AD-5000140-01

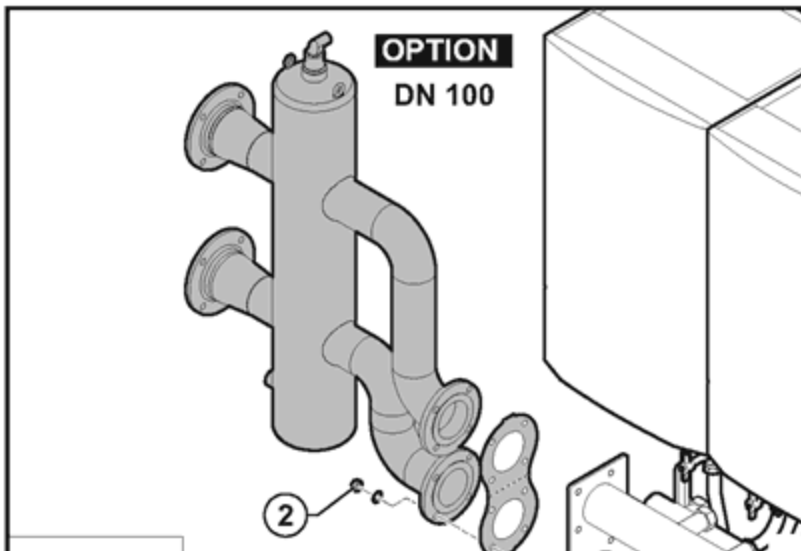
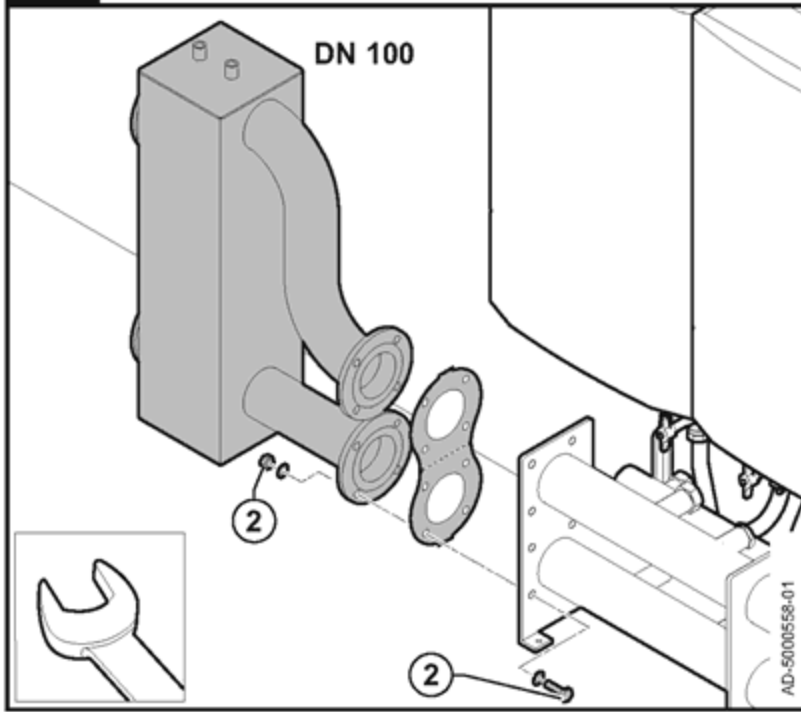
17



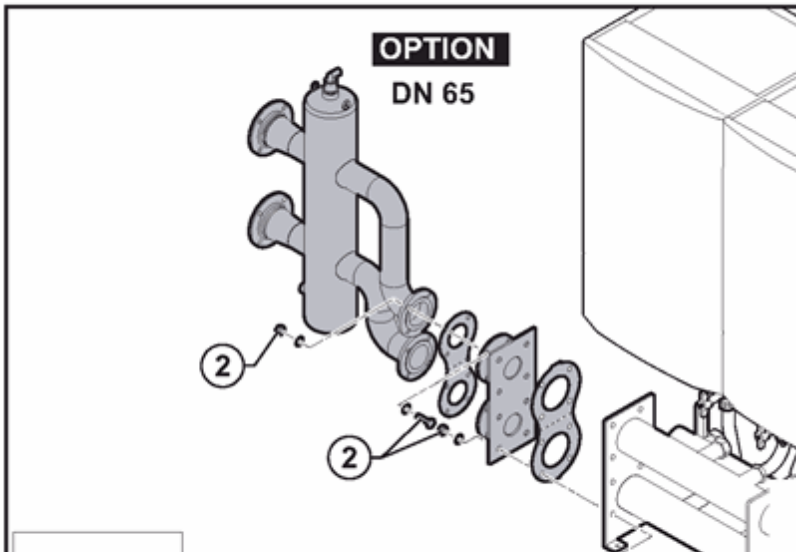
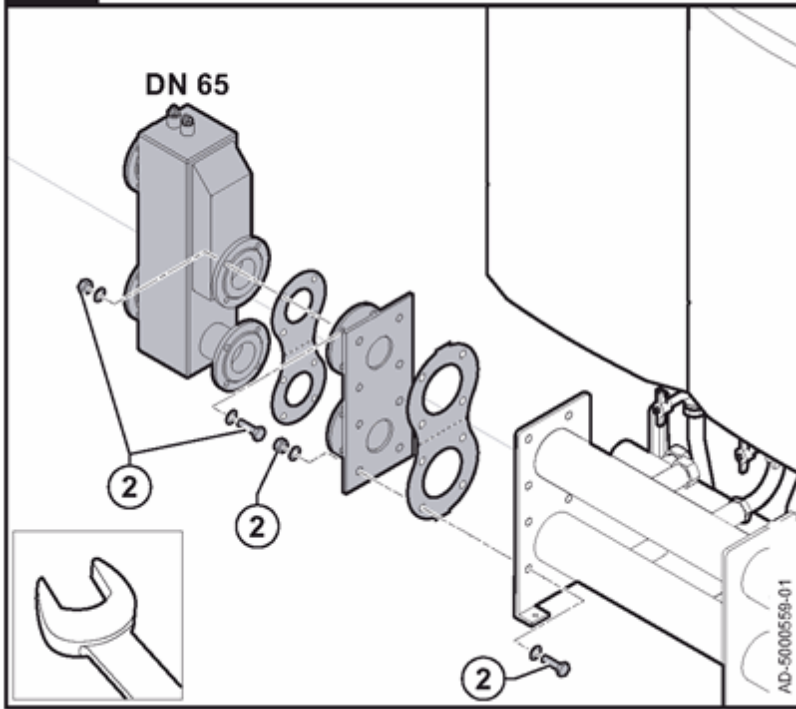
18

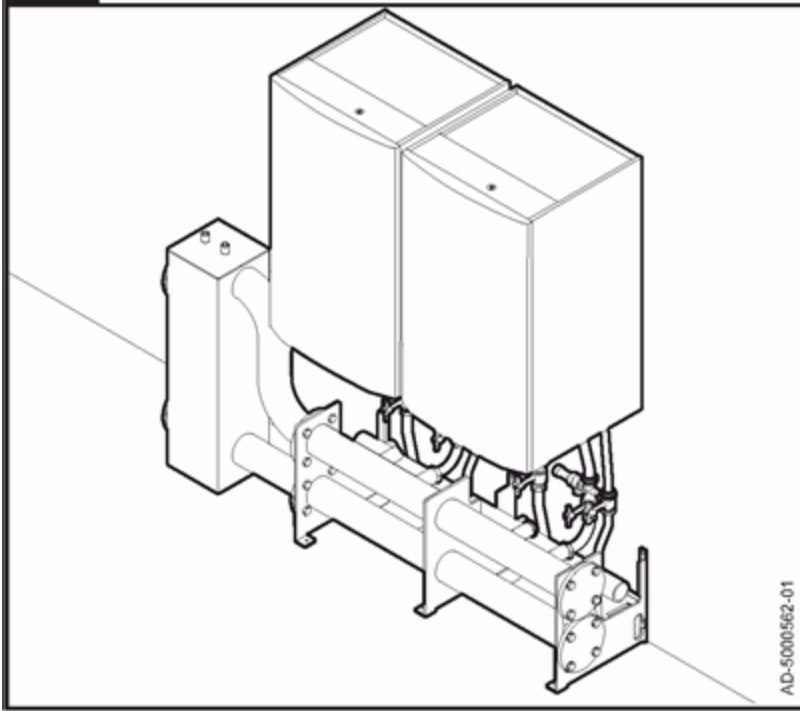




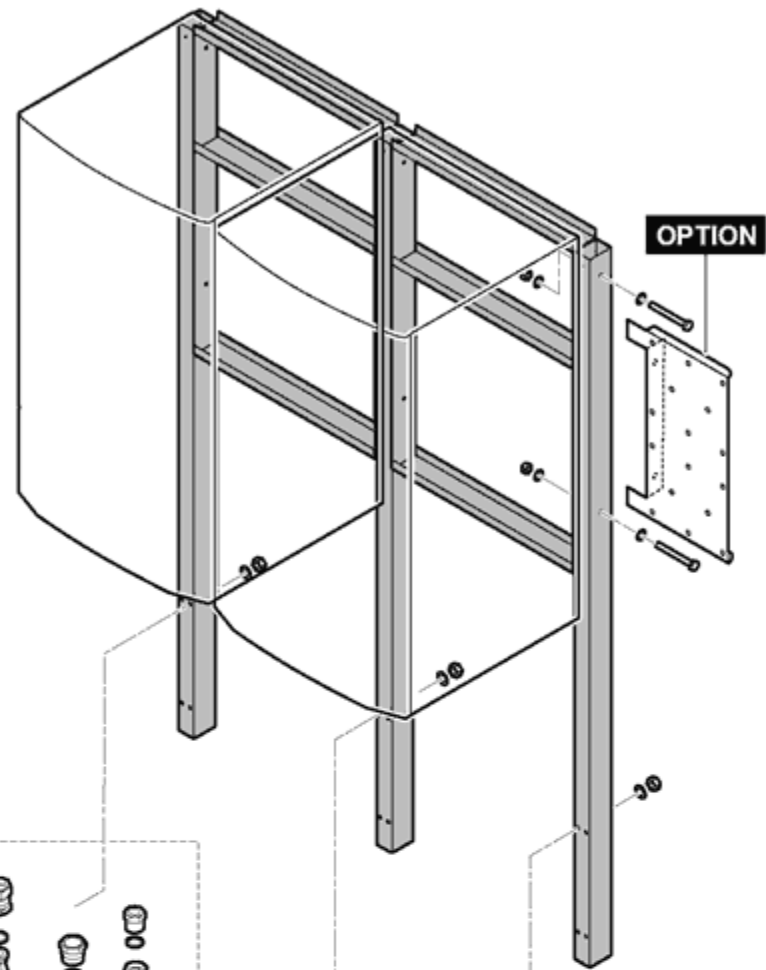
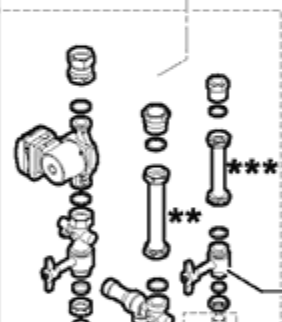
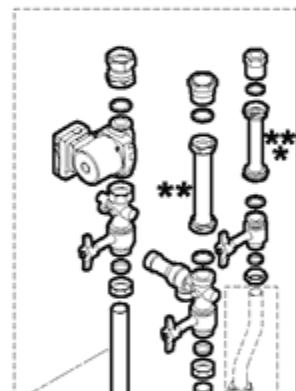
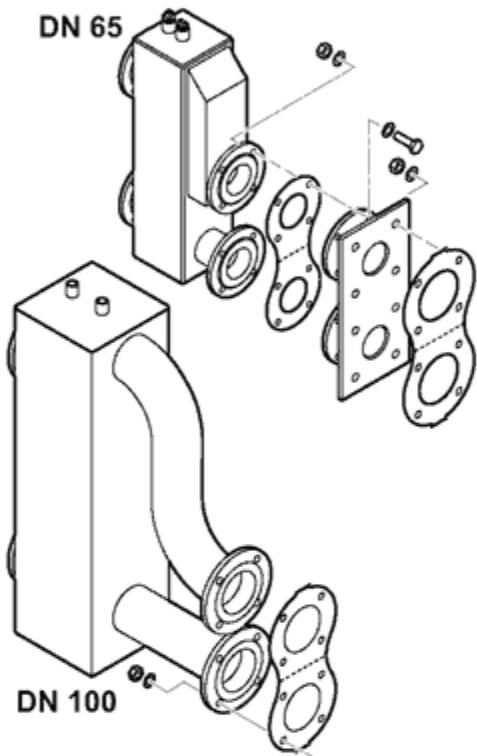


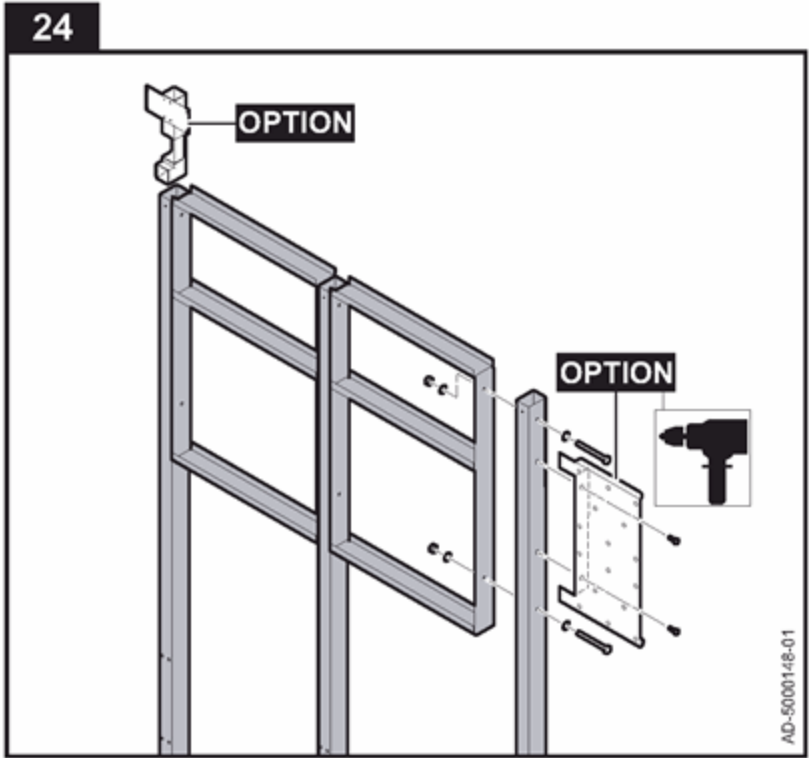
21



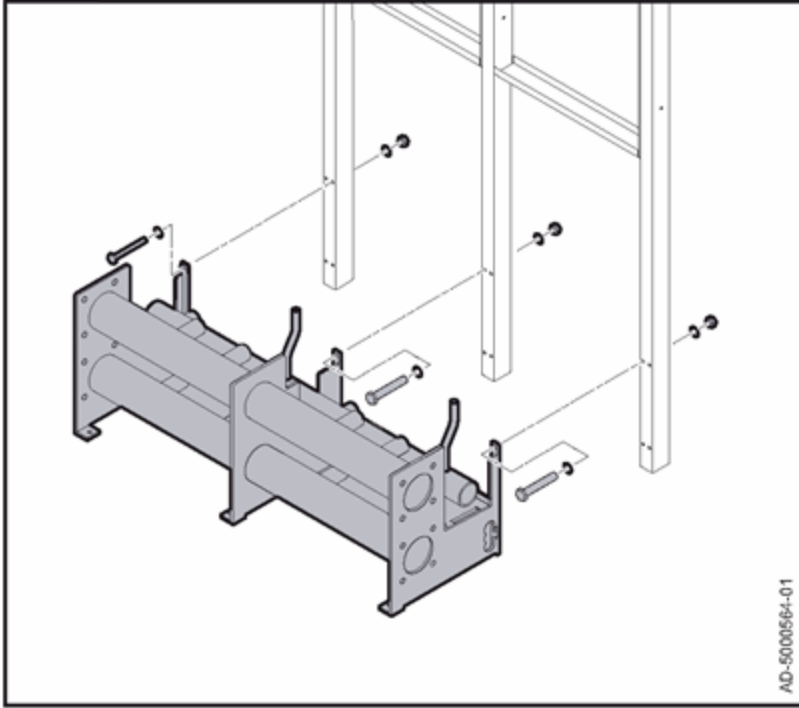


AD-5000562-01

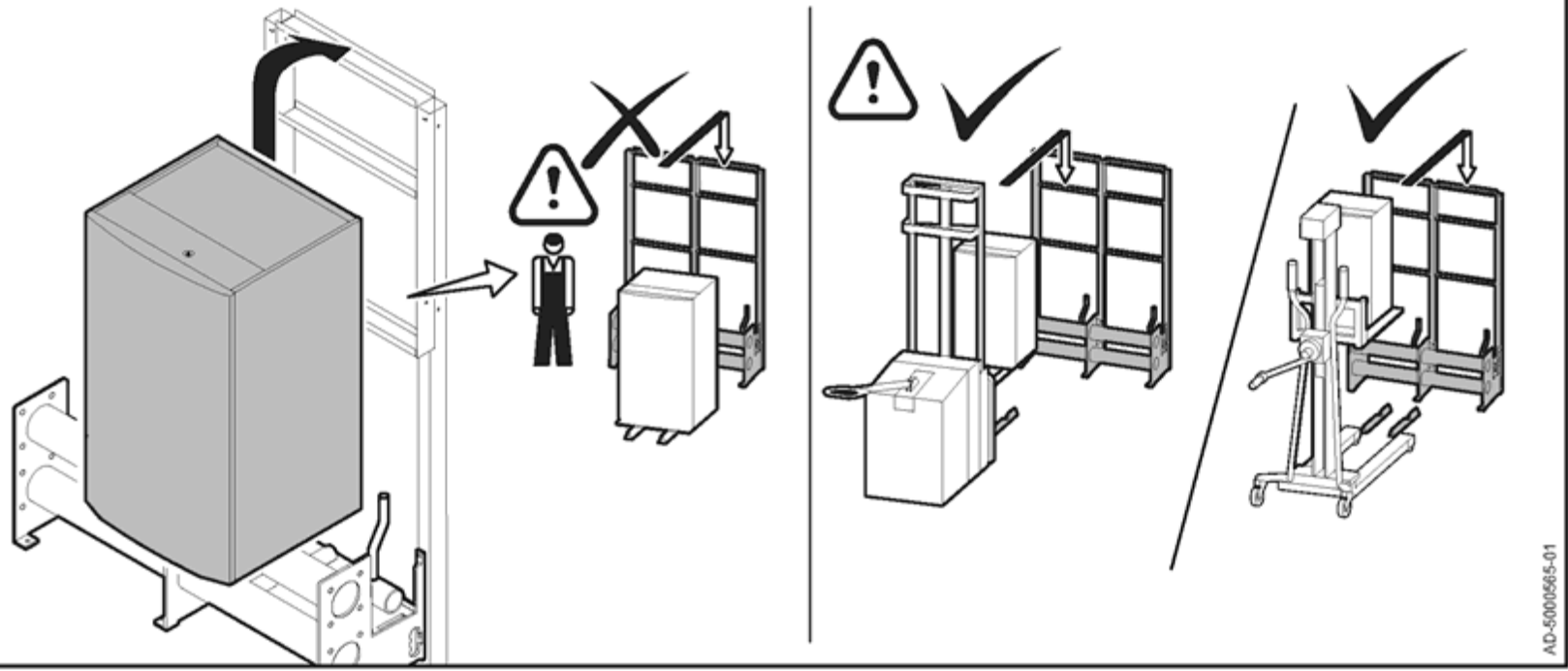


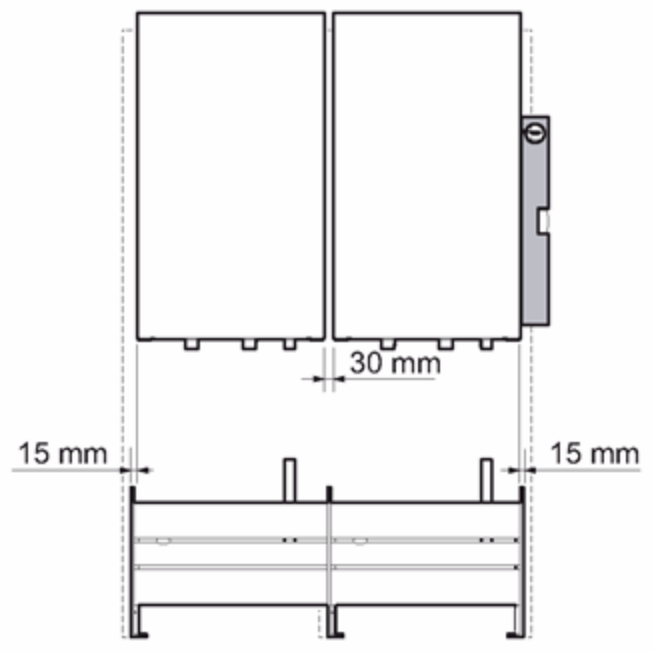


25



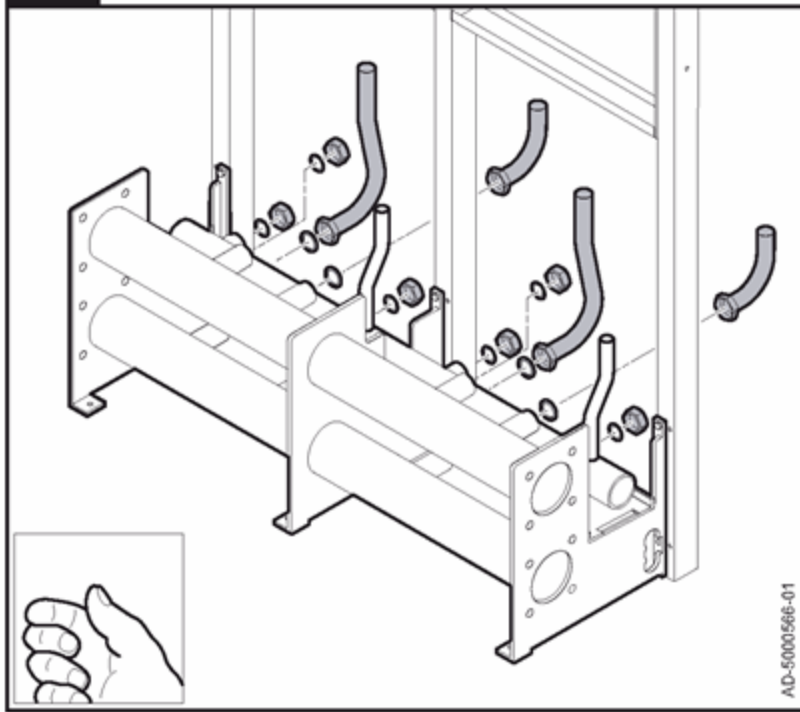
AD-5000564-01

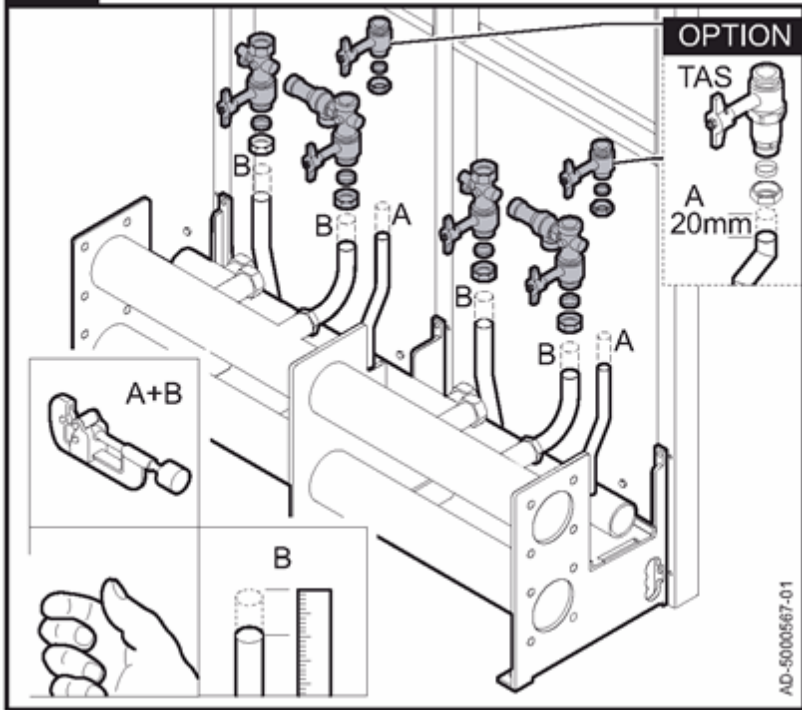




AD-5000140-01

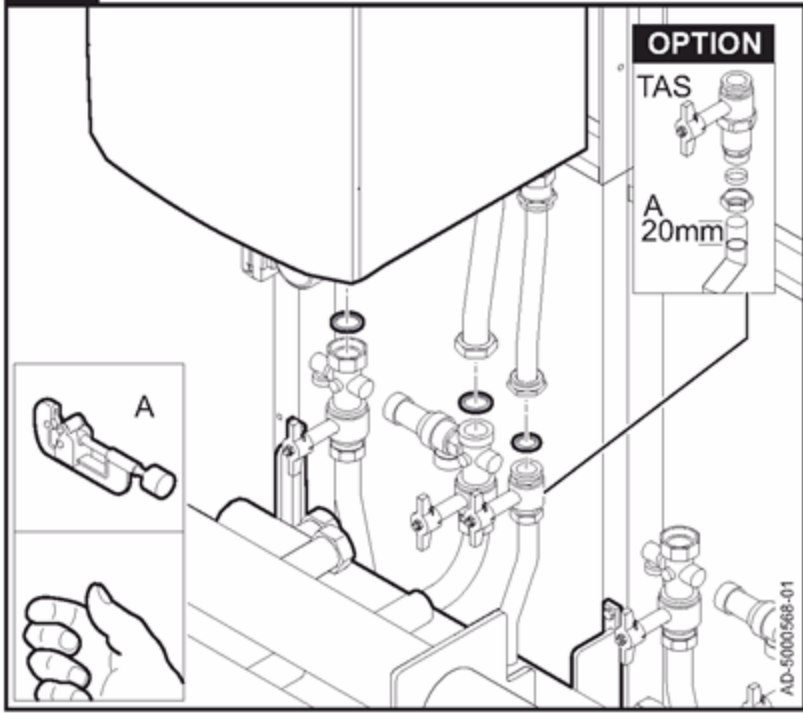
28



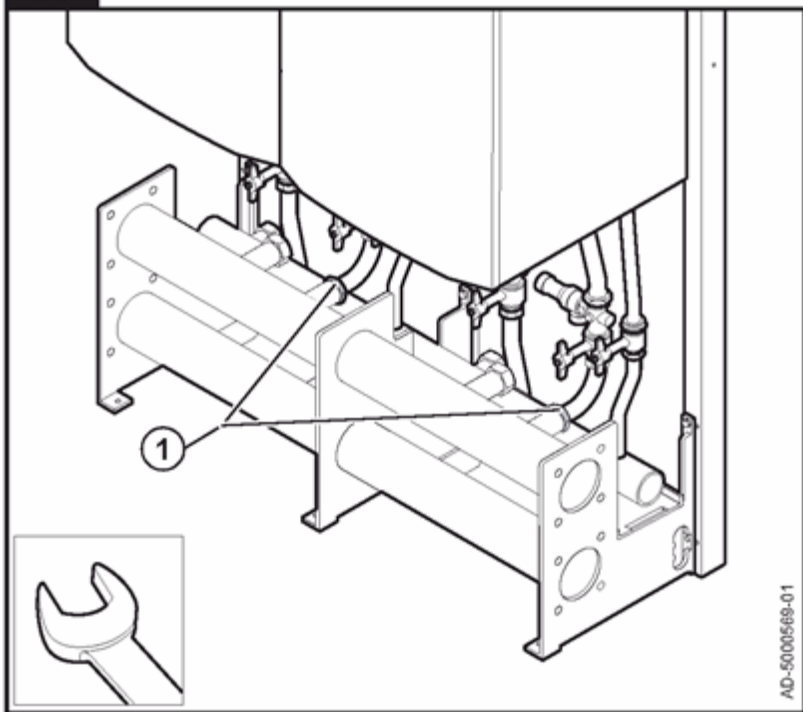


AD-5000567-01

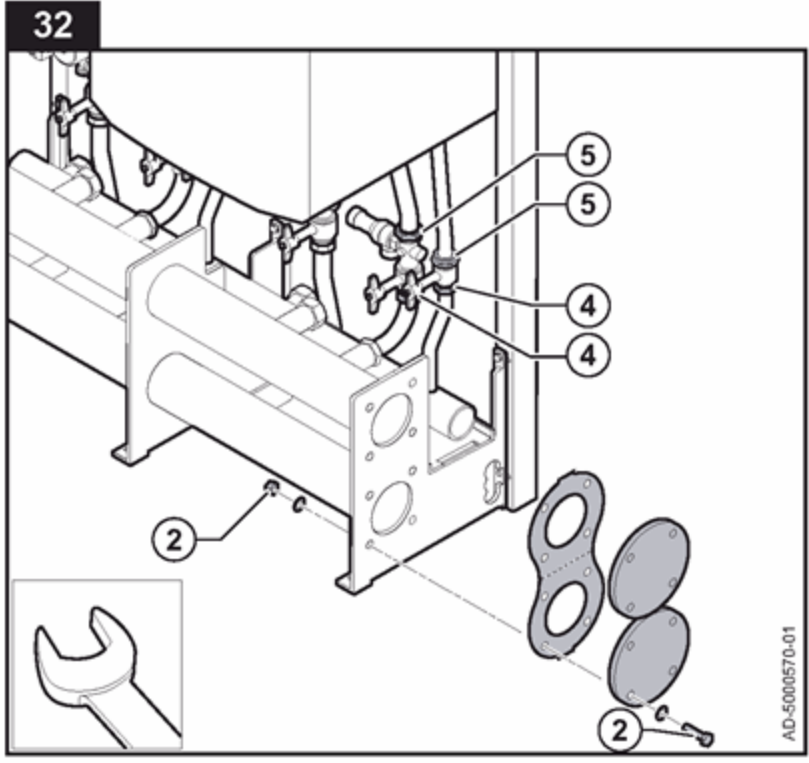
30



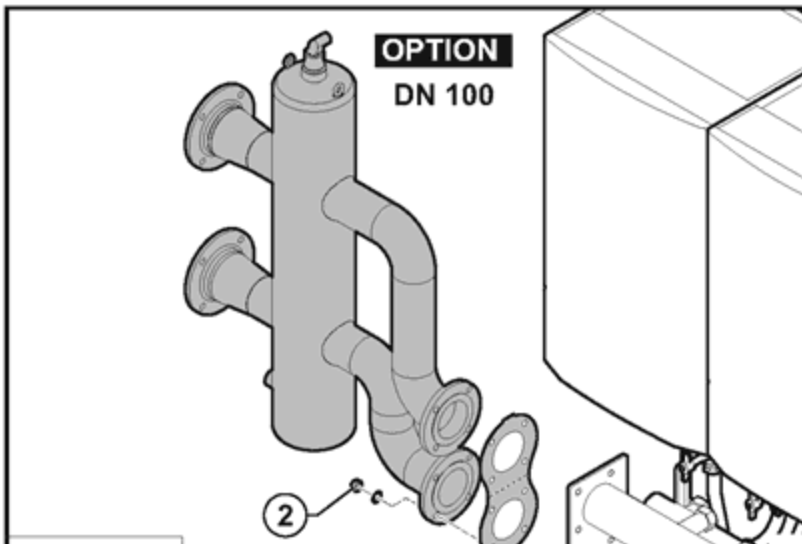
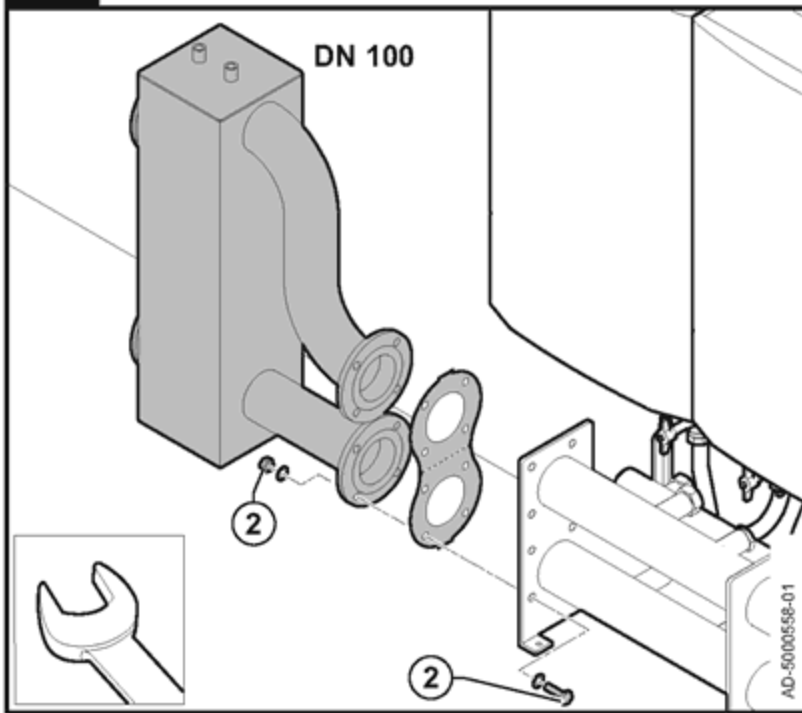
31

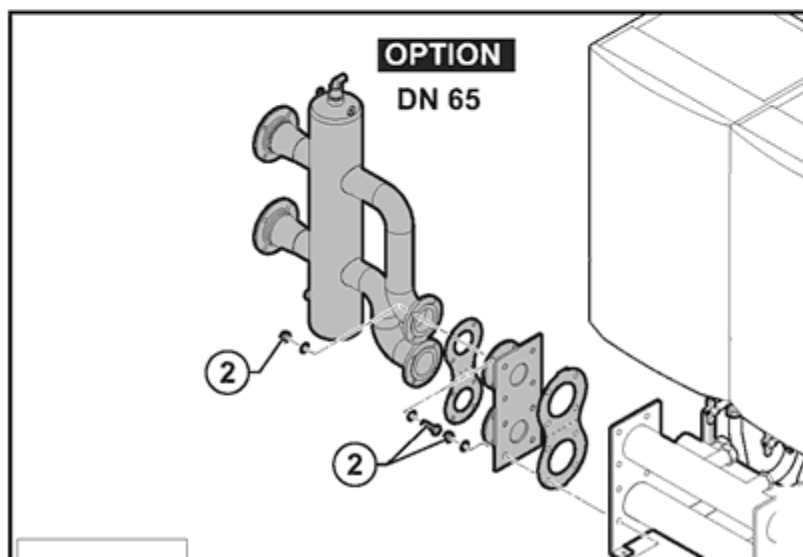
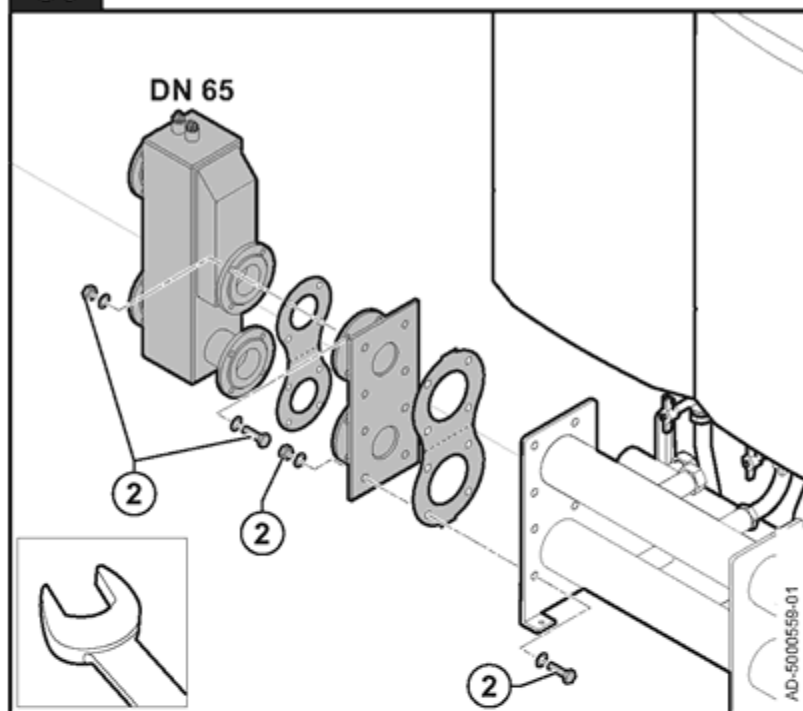


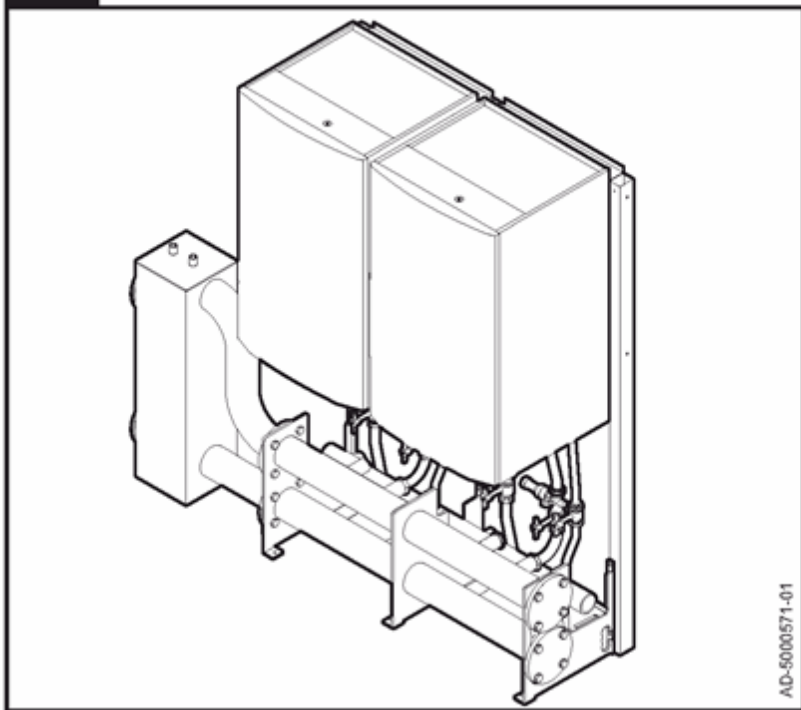
AD-5000569-01



33

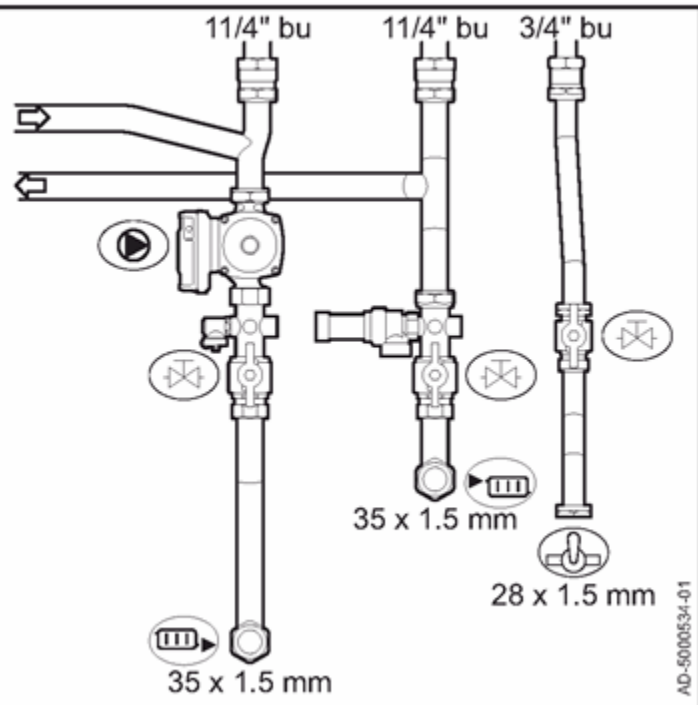




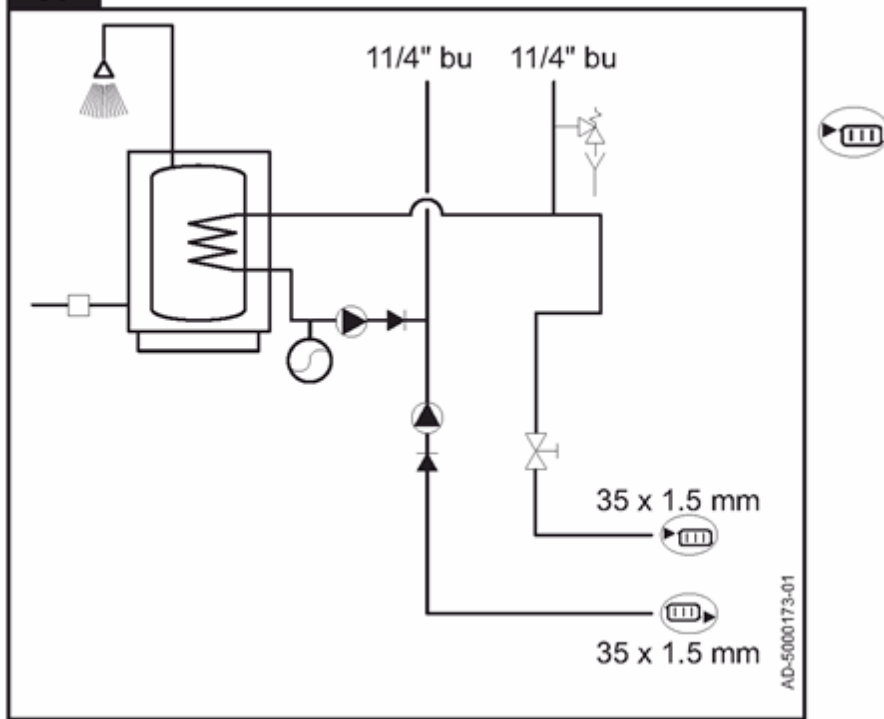




page 14

CALORIFIER CONNECTION



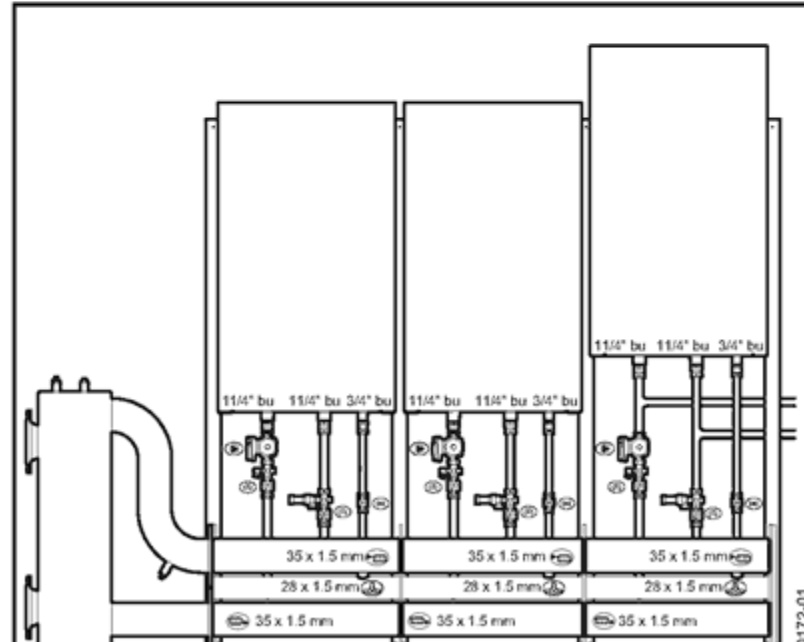
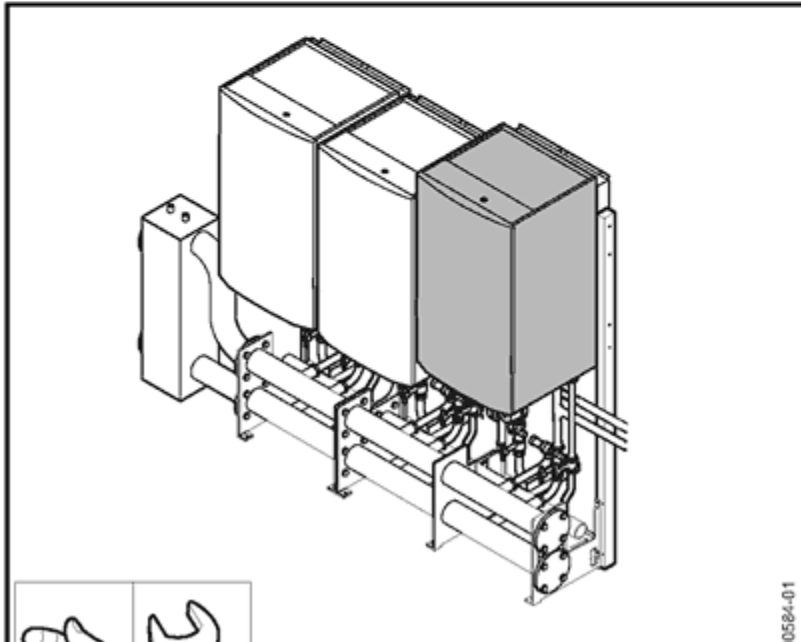
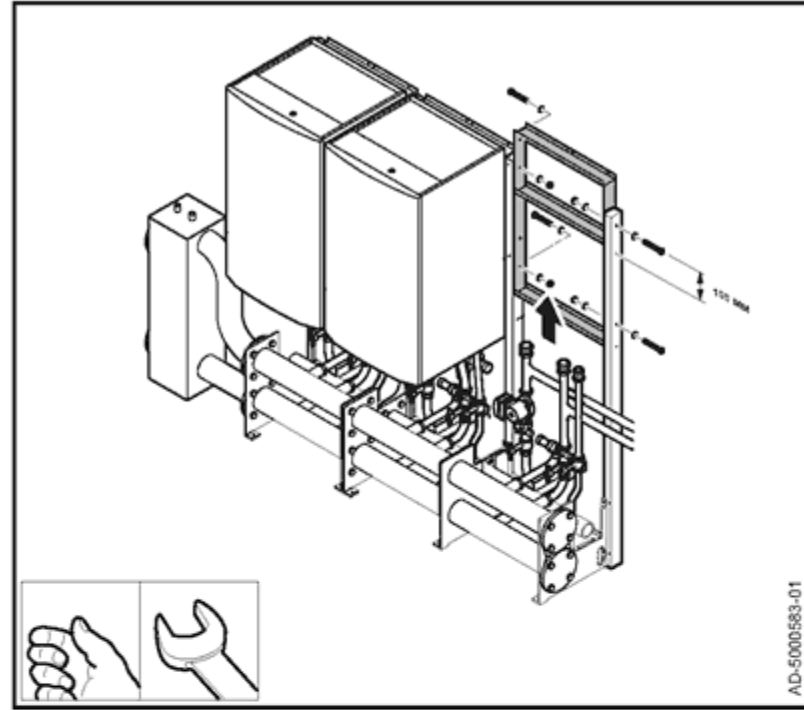
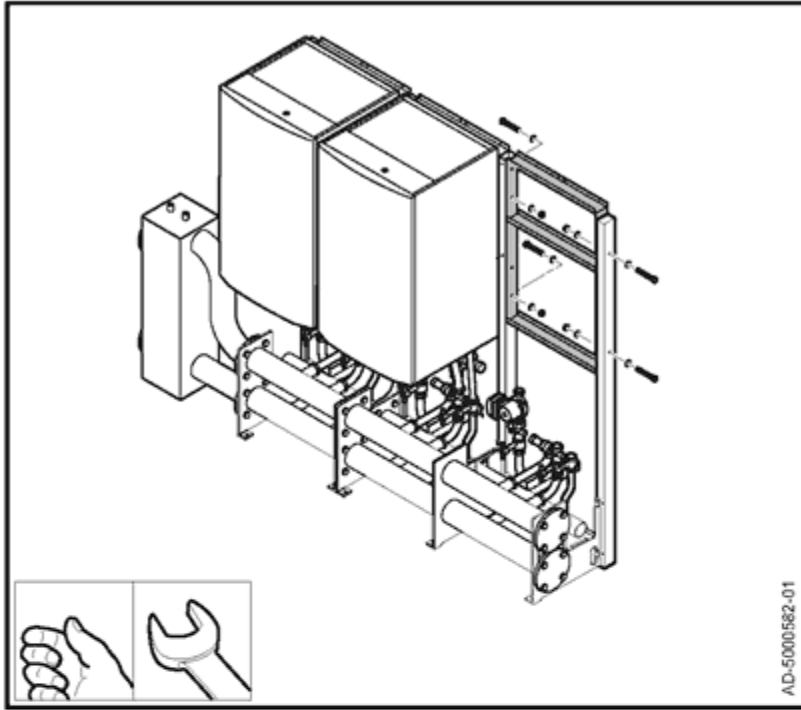
37

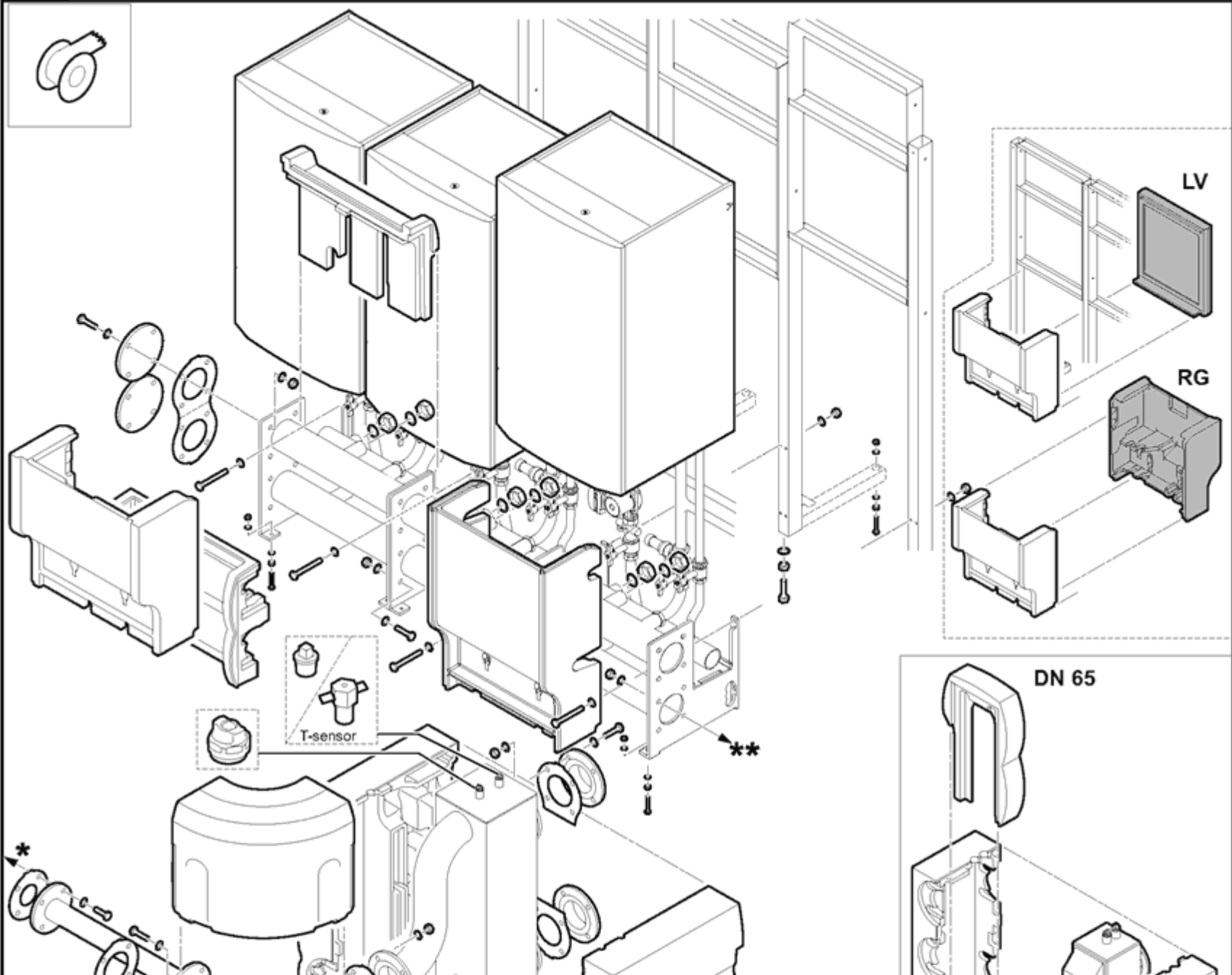


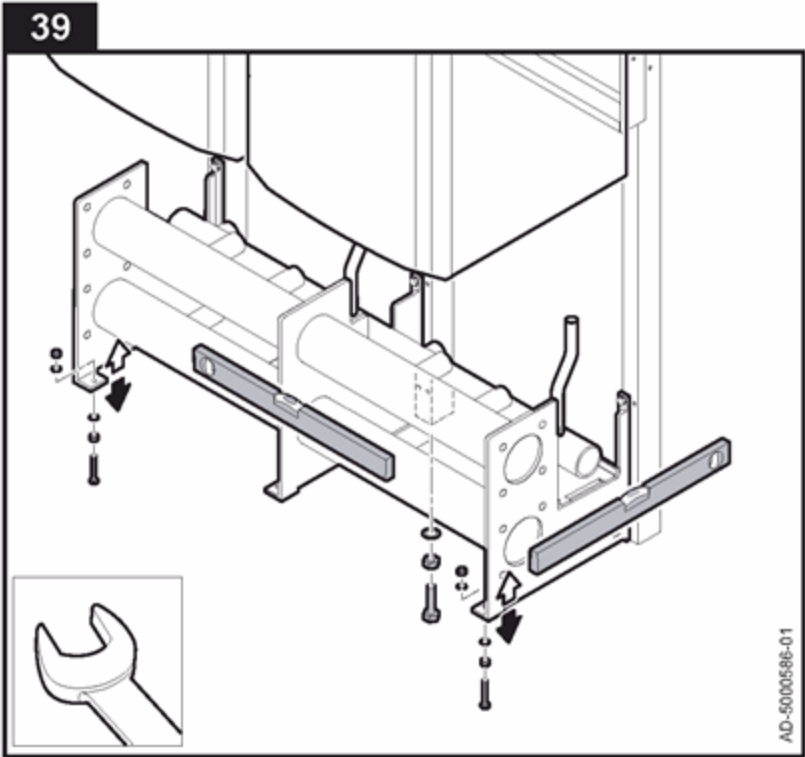
-  Stopcock
  Safety valve
  Expansion vessel
  Heating circuit return
-  Heating circuit flow
  Pump
  Non-return valve
  Gas connection

page 15

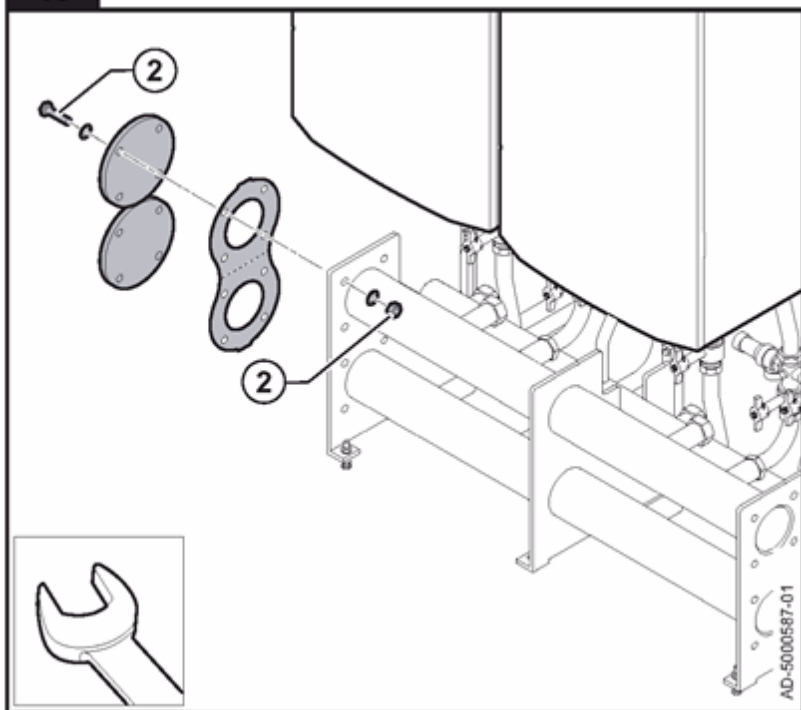
CALORIFIER CONNECTION



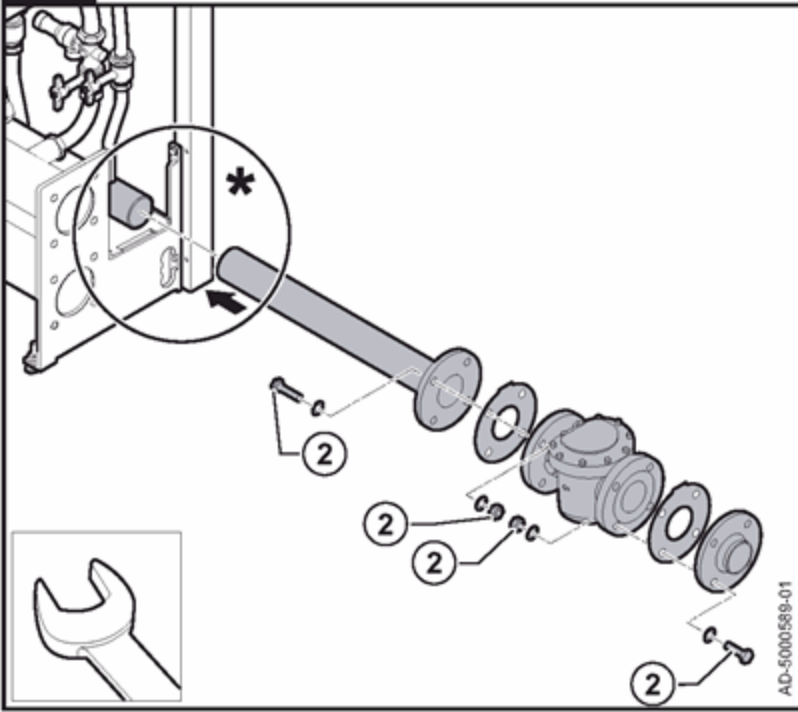




40

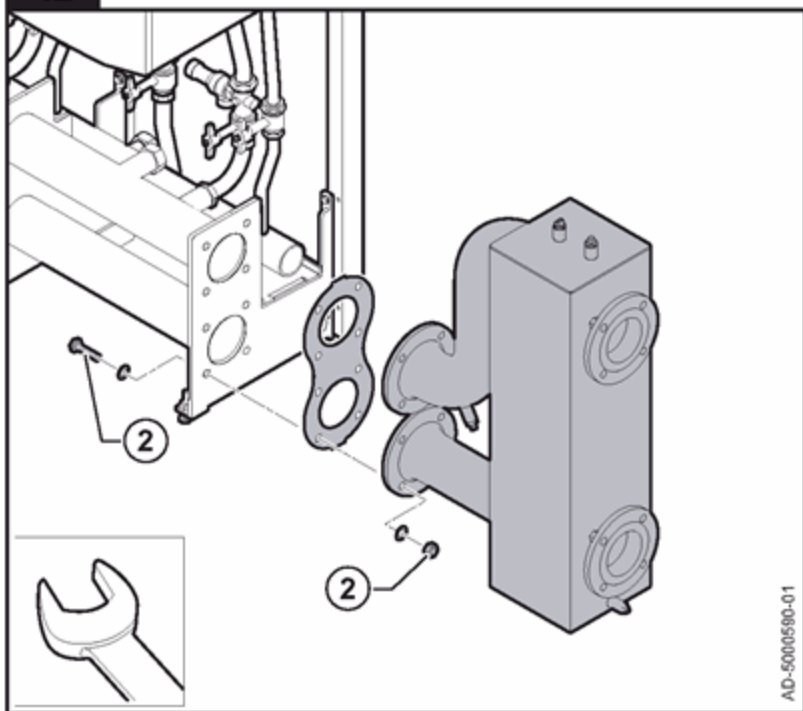


41



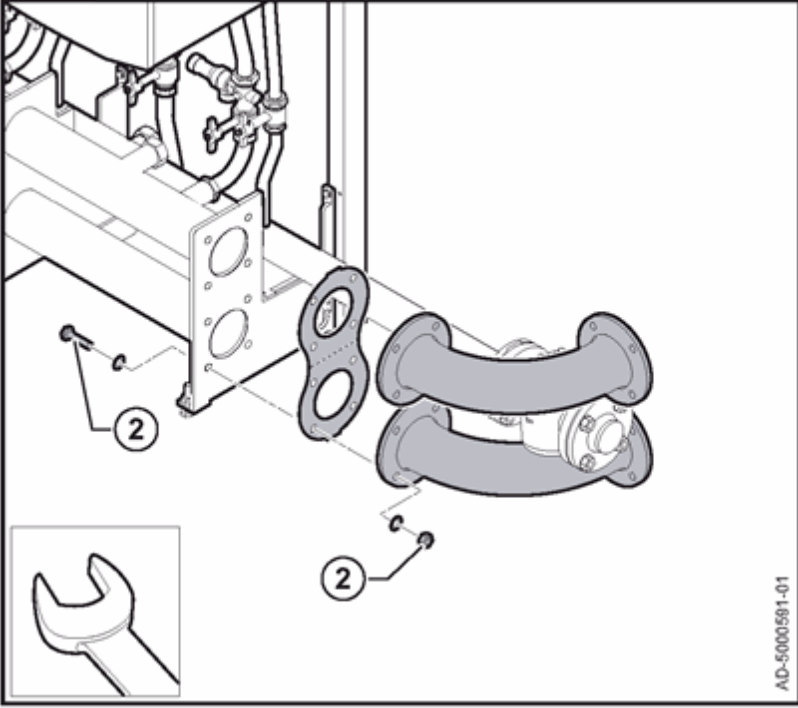
AD-5000589-01

42

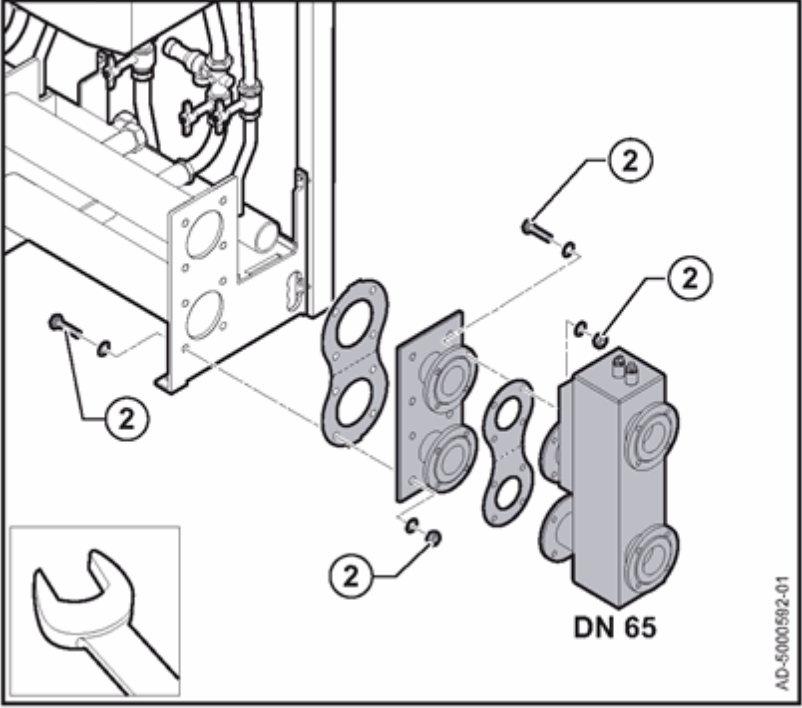


AD-5000580-01

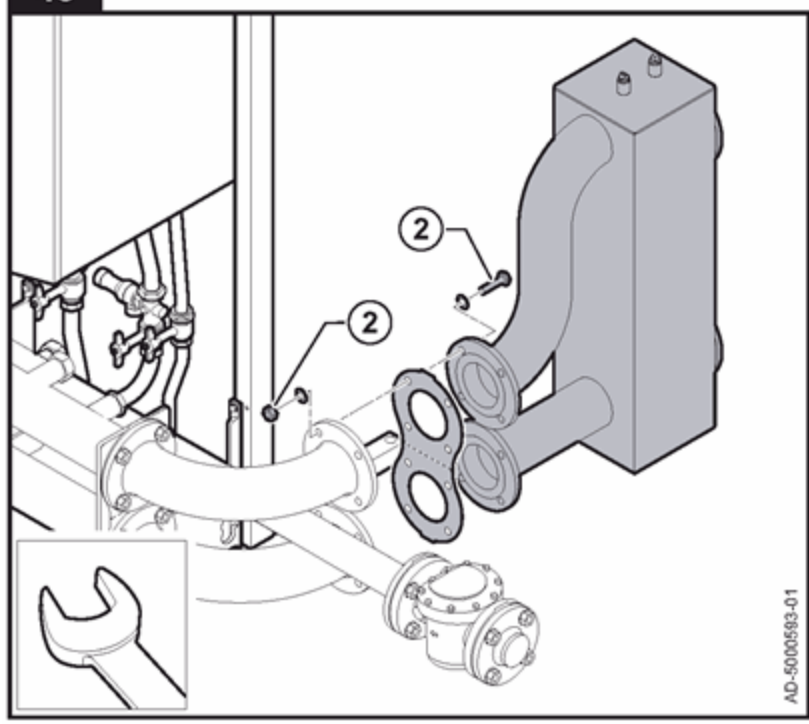
43



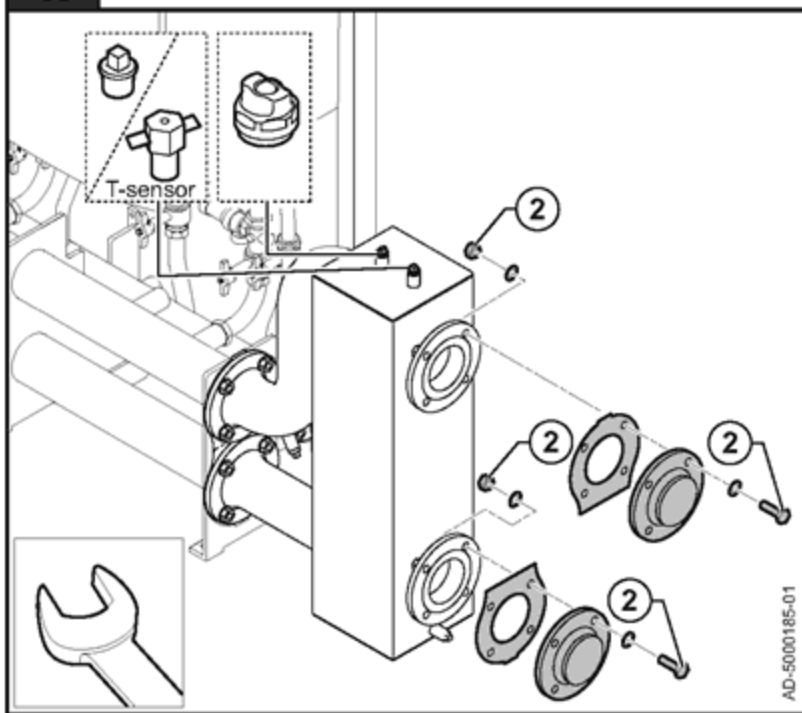
44

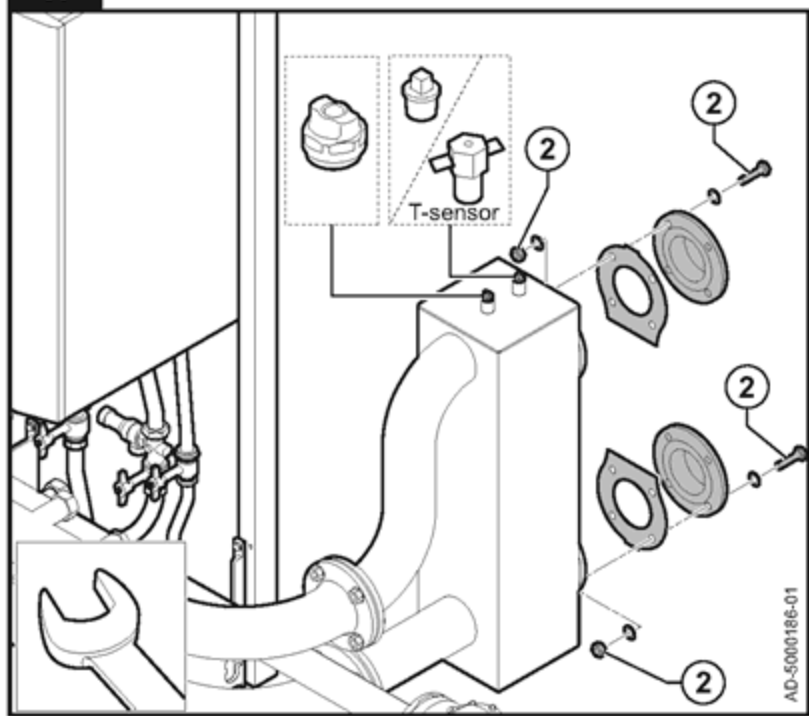


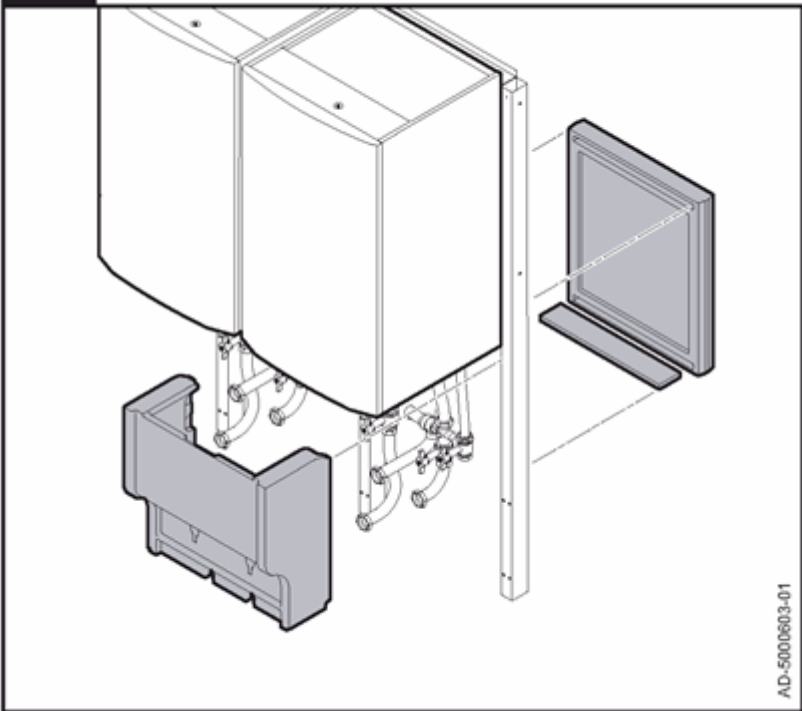
45



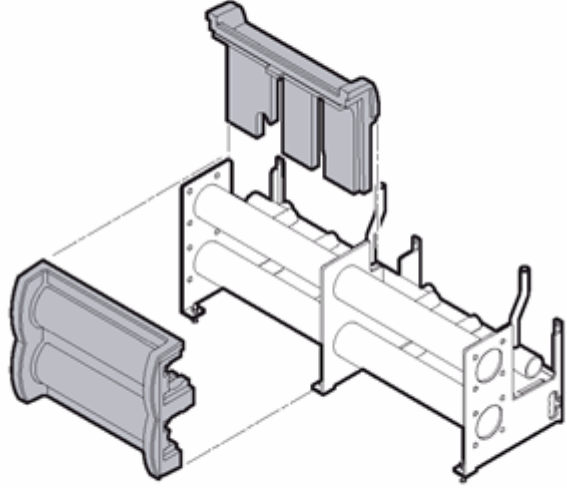
AD-5000593-01



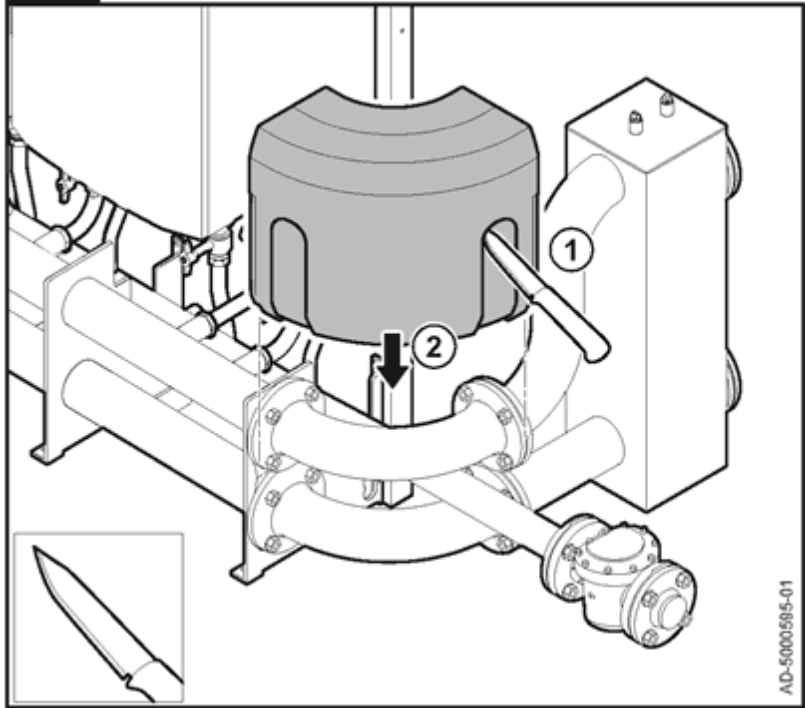




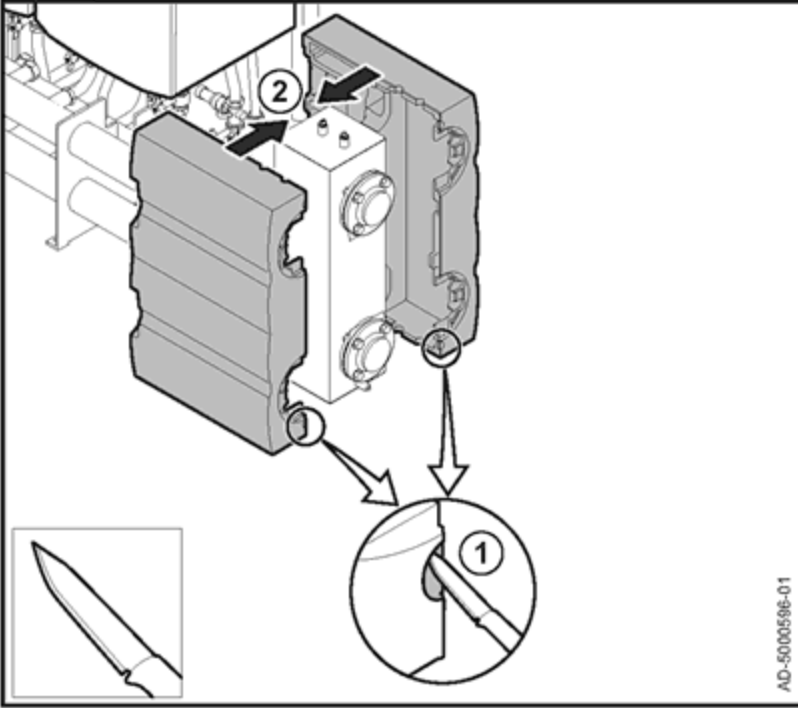
AD-5000603-01



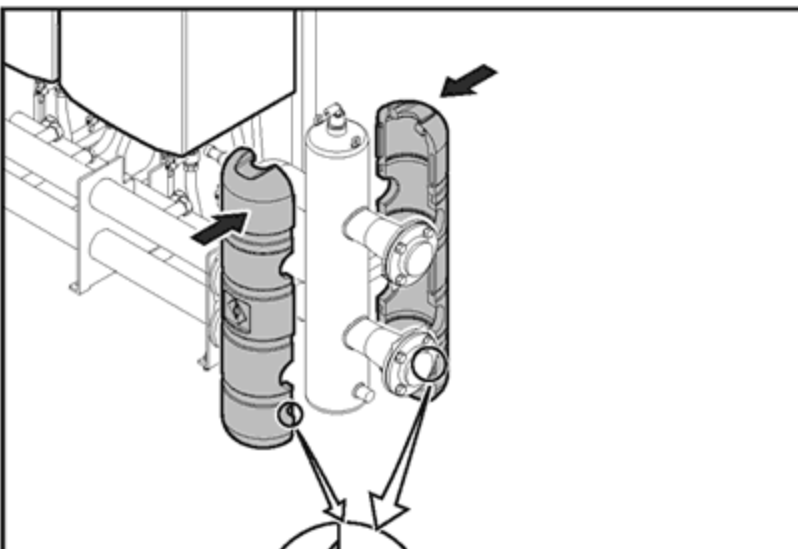
AD-5000584-01



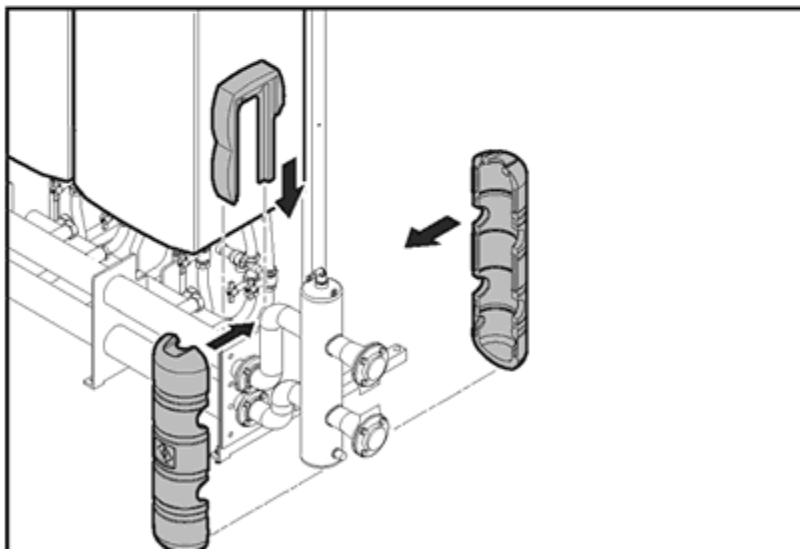
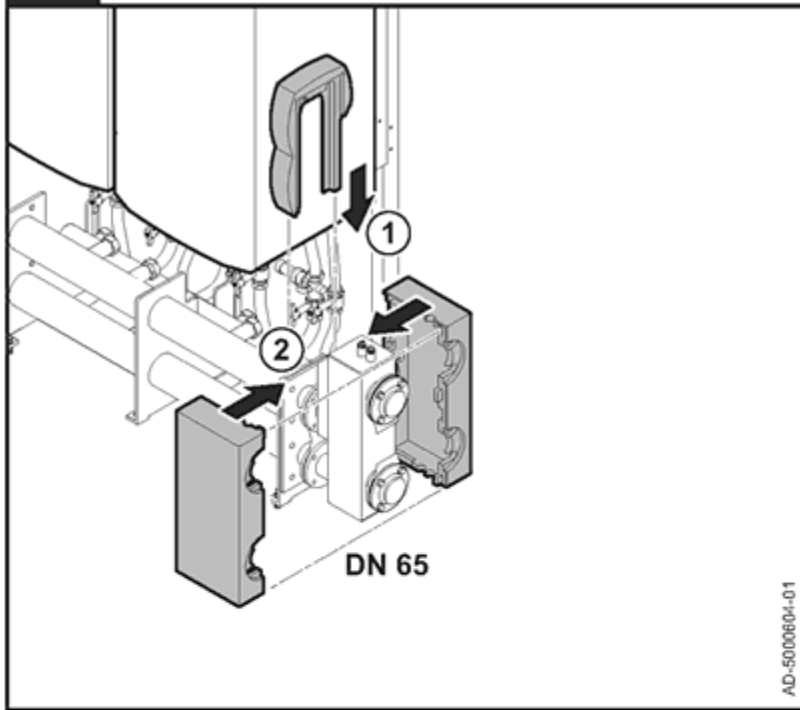
51



AD-5000596-01



52



page 20

© Copyright

All technical and technological information contained in these technical instructions, as well as any drawings and technical descriptions supplied, remain our property and shall not be multiplied without our prior consent in writing.

Ours is a policy of continuous development. We reserve the right to alter specifications without prior notification. Subject to alterations.

7699493 - v.01 - 08032019



page 24