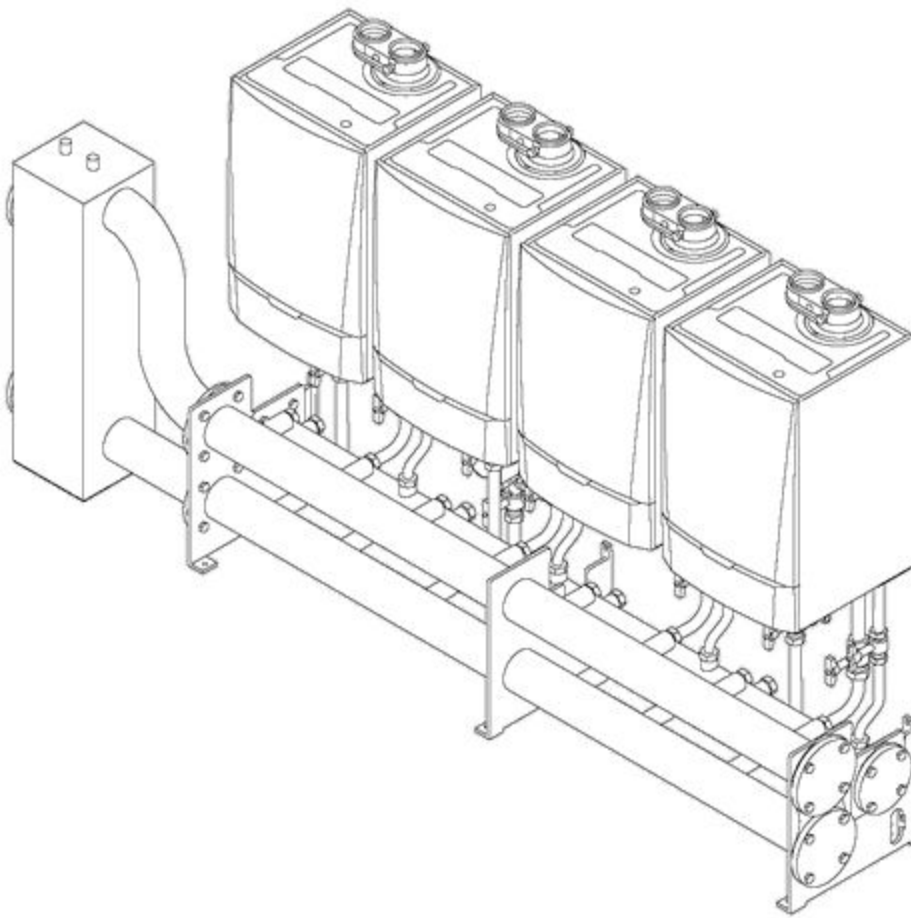


# Assembly instructions

## Cascade system



T002421-B

---

## CONTENTS

TOOLS

CAUTION

TIGHTENING TORQUE GUIDELINES



Pag 6



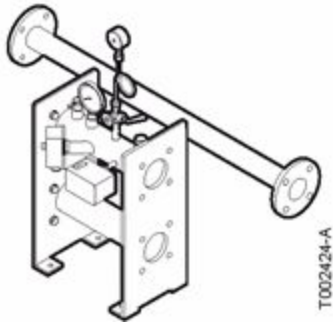
Pag 10



OPTIONS

I.S.P.E.S.L

I.S.P.E.S.L OPTIONS



## TOOLS

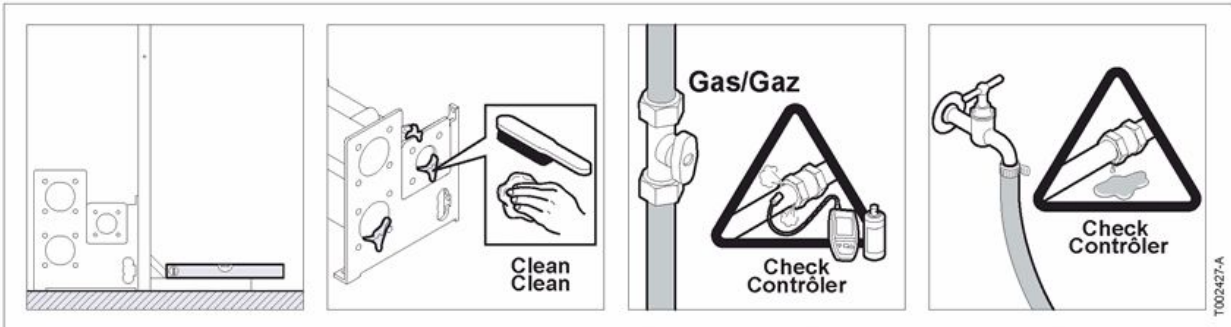
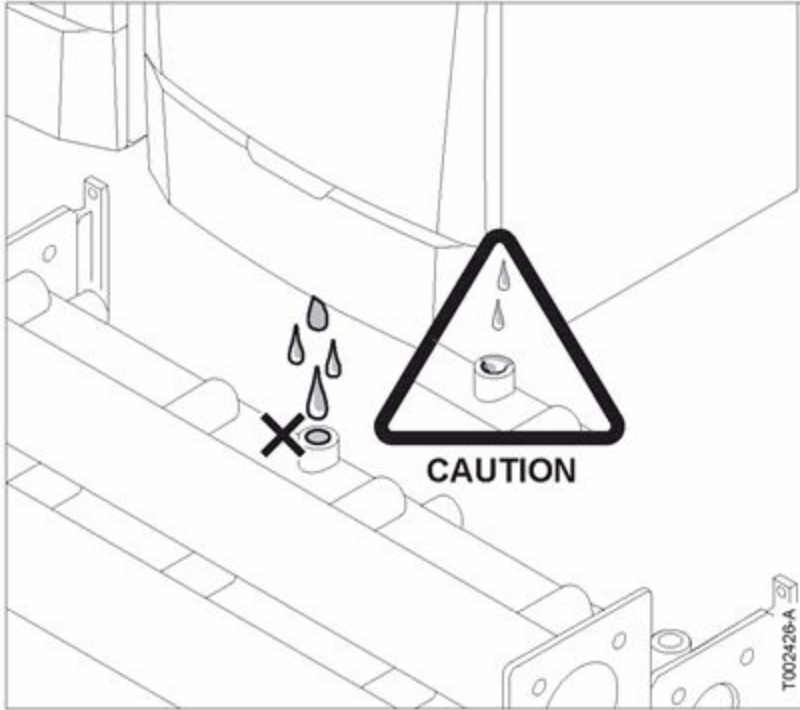


13 - 19 - 24 - 46 - 50 - 55

page 2

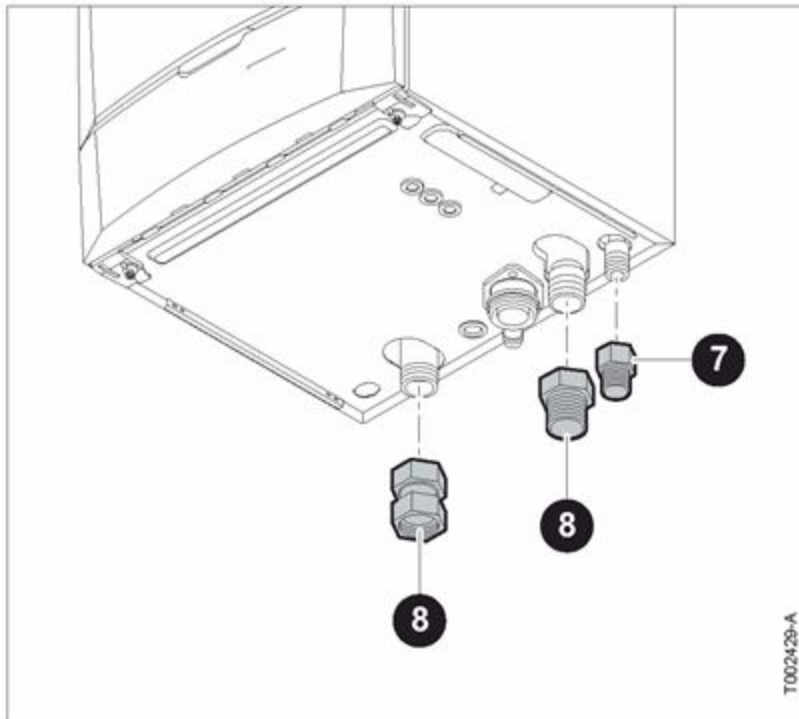
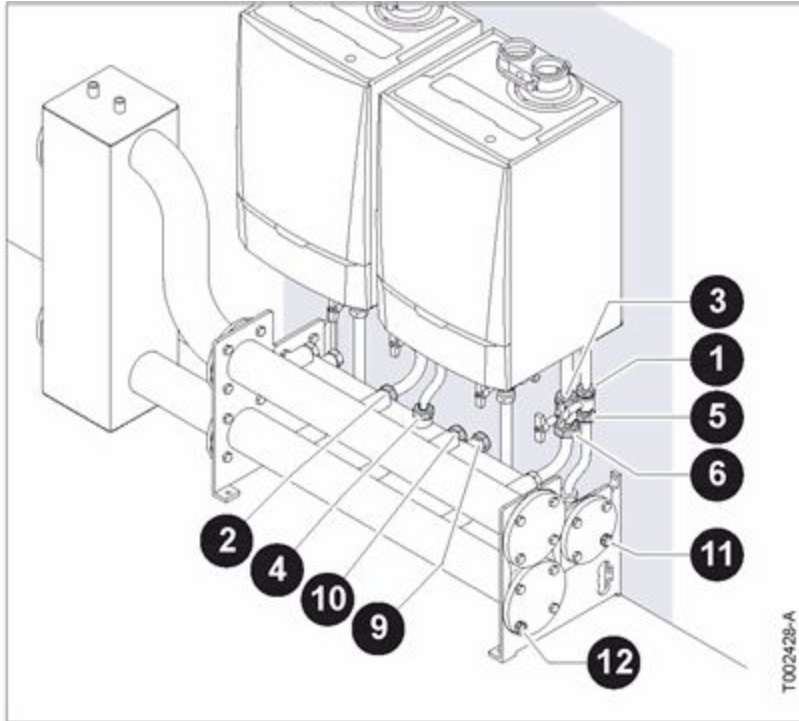
---

## CAUTION



\* The leak test determines the correct connection of the cascade system. The torques specified are intended as a guideline.

## TIGHTENING TORQUE GUIDELINES



1 30 Nm

- 2 40 Nm
- 3 30 Nm
- 4 40 Nm
- 5 • Tighten hand tight. then tighten by a further  $\frac{3}{4}$  turns.
- 6
- 7 30 Nm
- 8 50 Nm
- 9 15 Nm
- 10 15 Nm
- 11 35 Nm
- 12 35 Nm

page 4

---

### General remarks

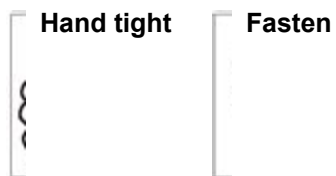
Preferably approved sealing material should be used.

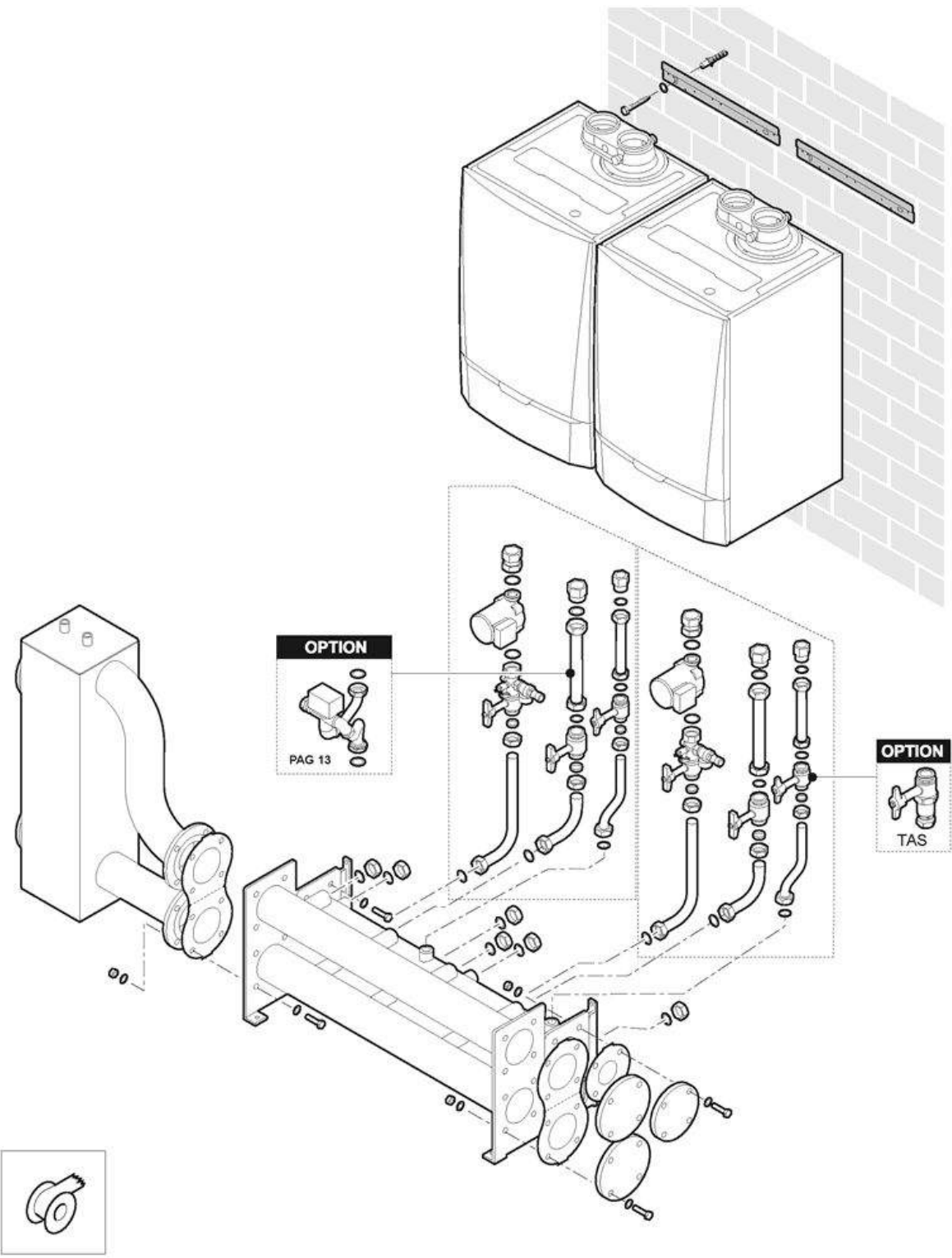
### Pressure testing

After assembling the boilers and the cascade system, a pressure-test will visualise water tightness of the cascade system. The flow and return connections must be blanked off. Apply a cold water pressure of 1.3 x working pressure.

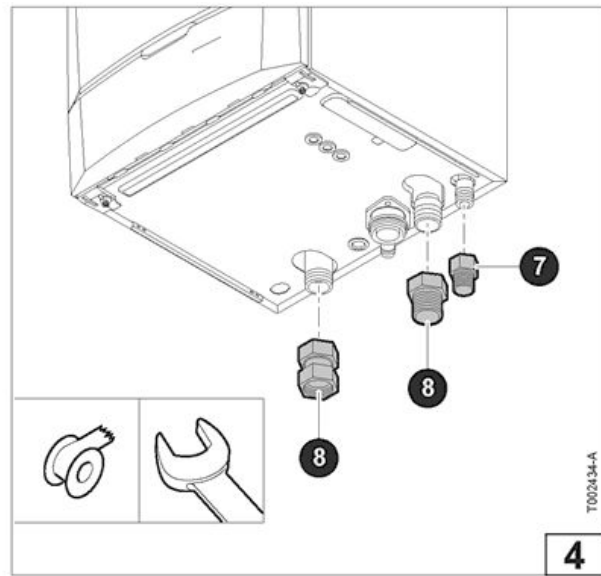
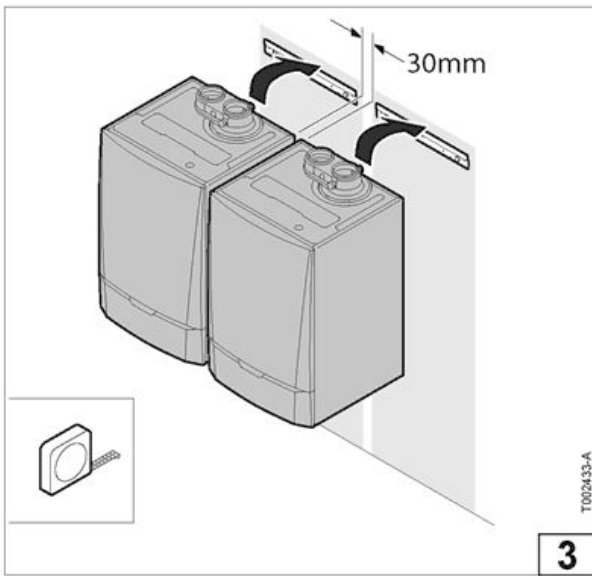
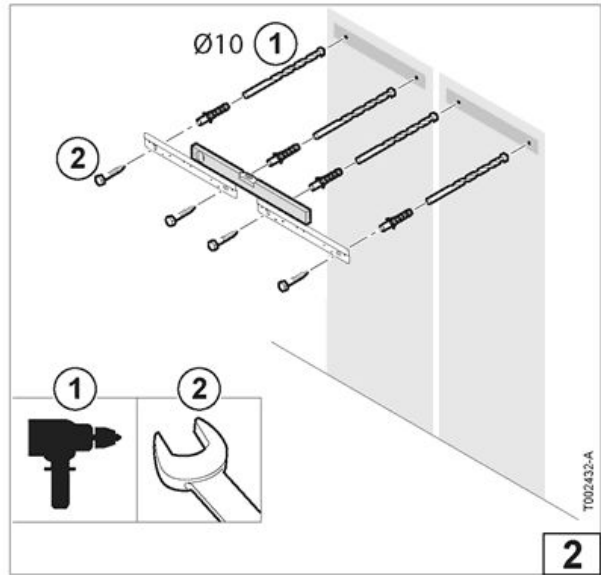
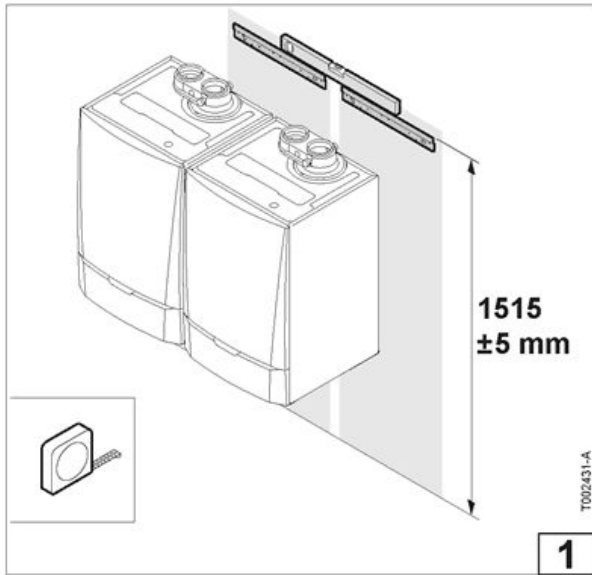
page 5

---

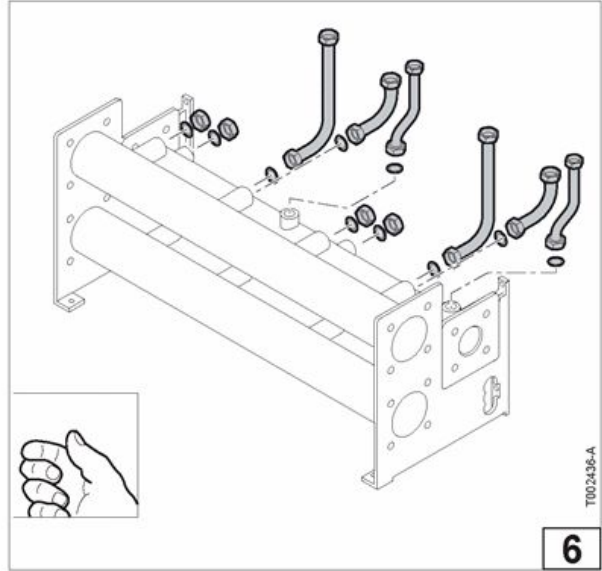
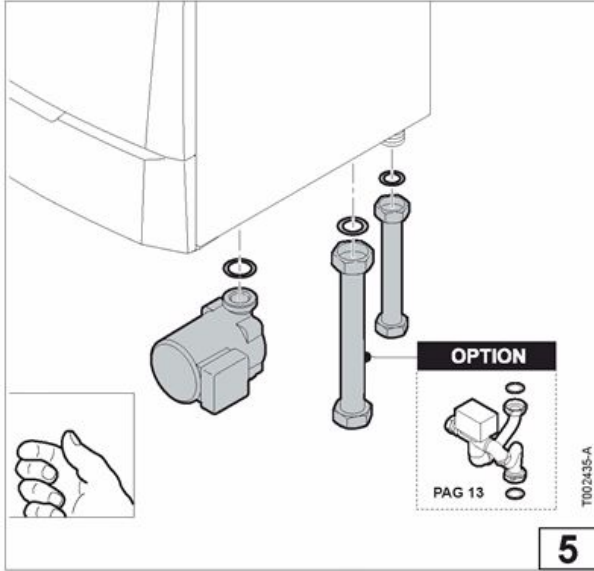




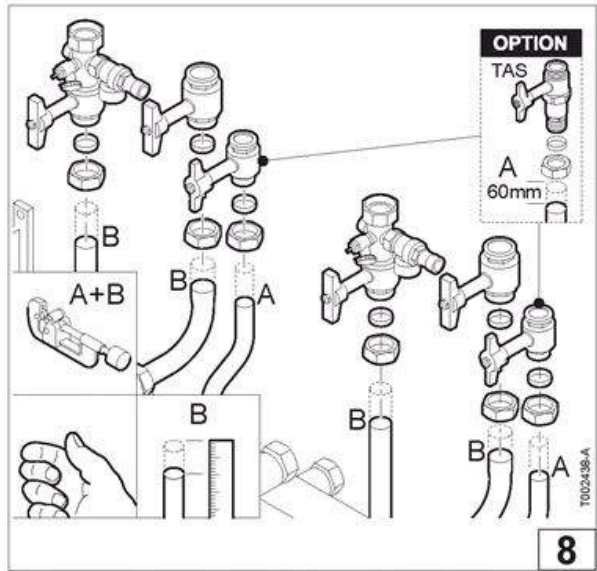
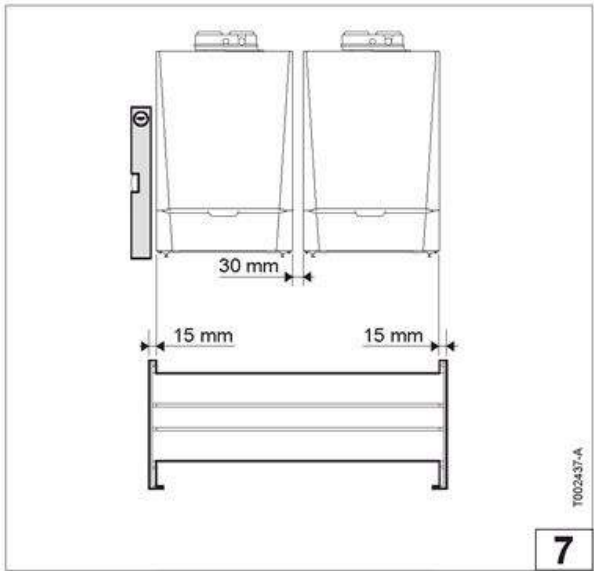
T002430-A

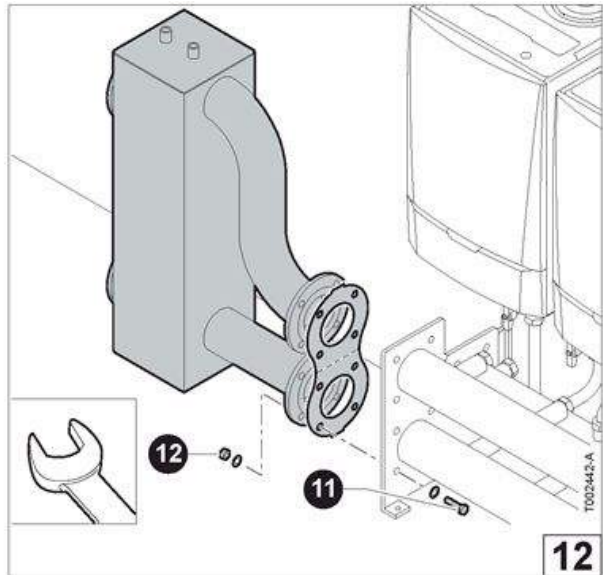
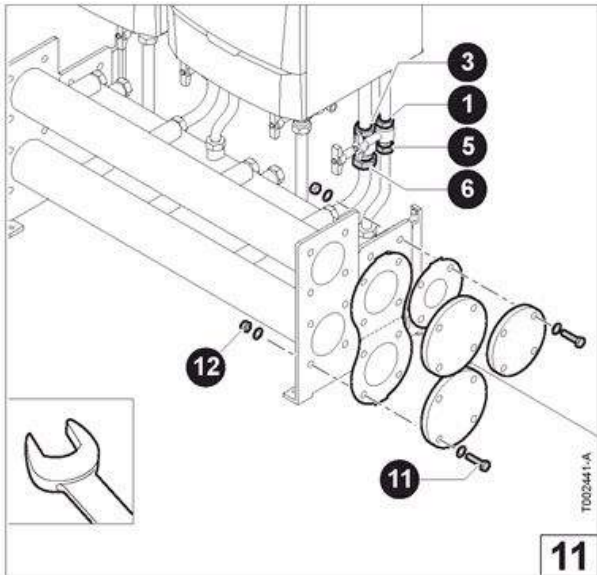
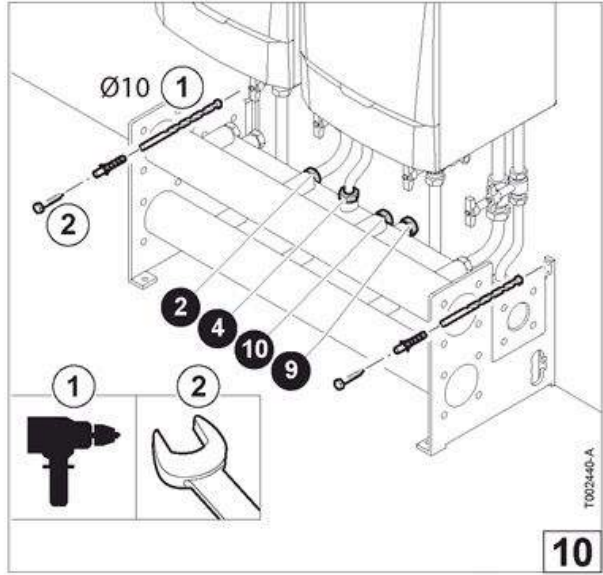
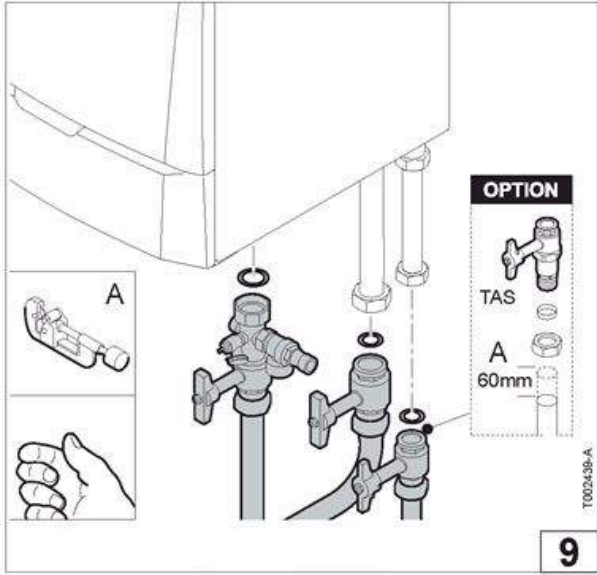


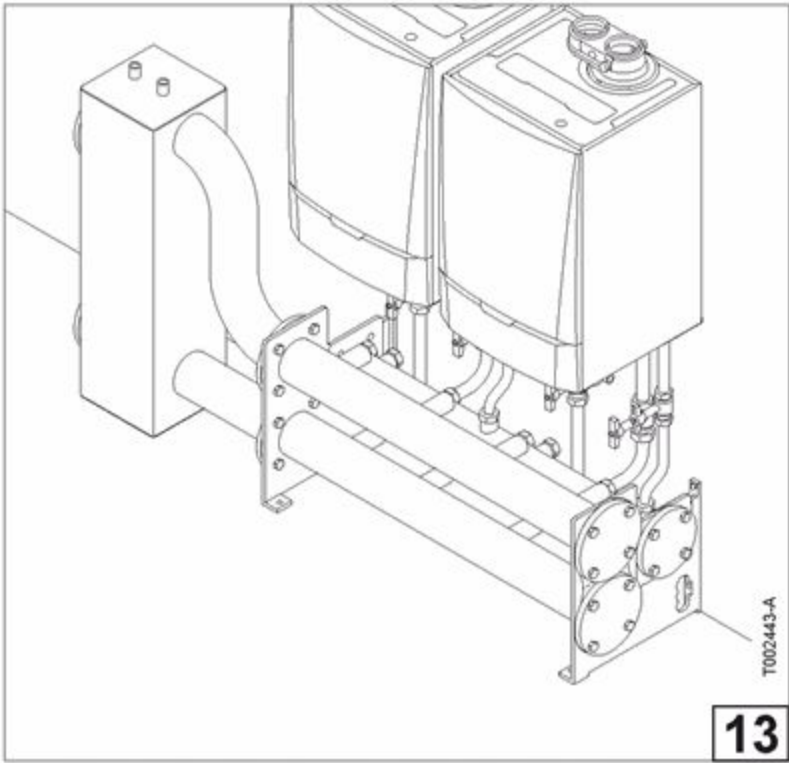




page 7



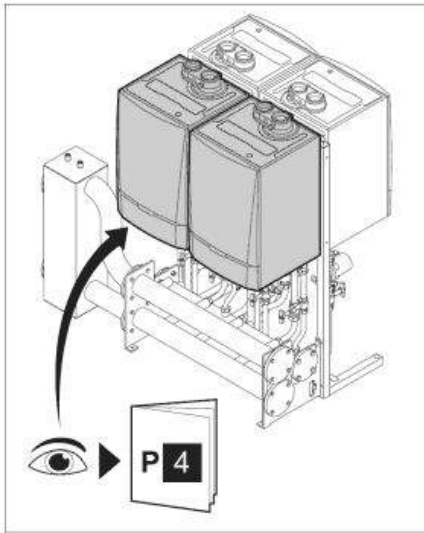




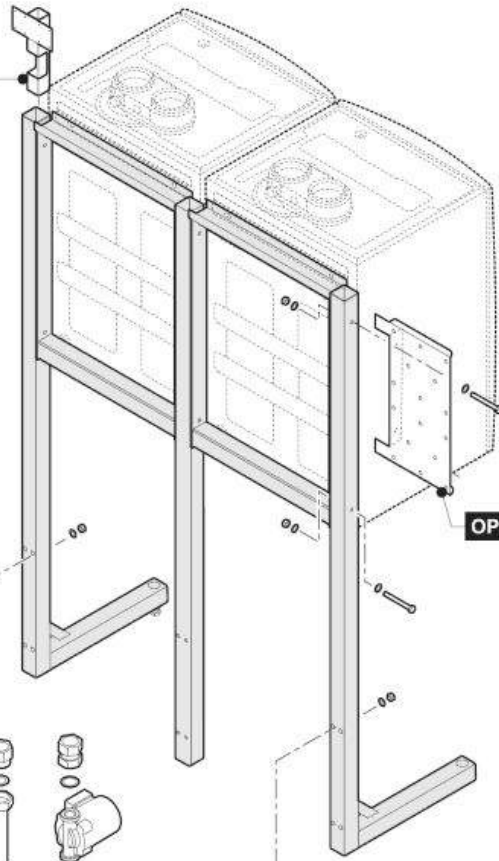
page 9

Hand tight

Fasten

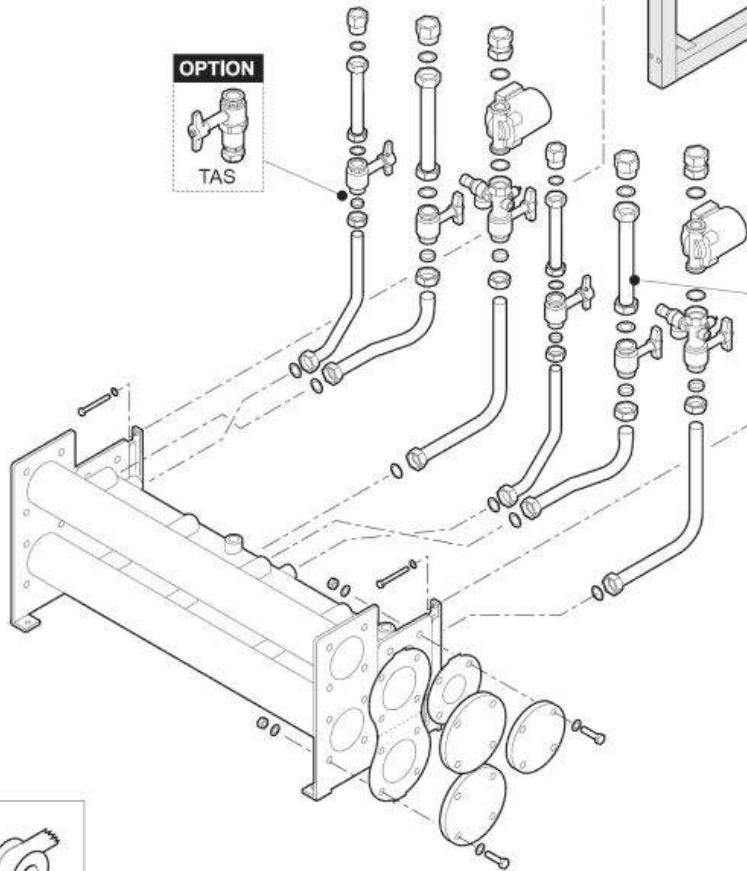


OPTION



OPTION

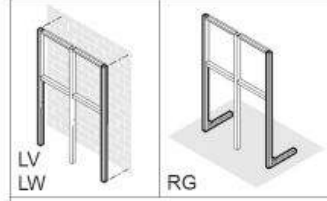
OPTION



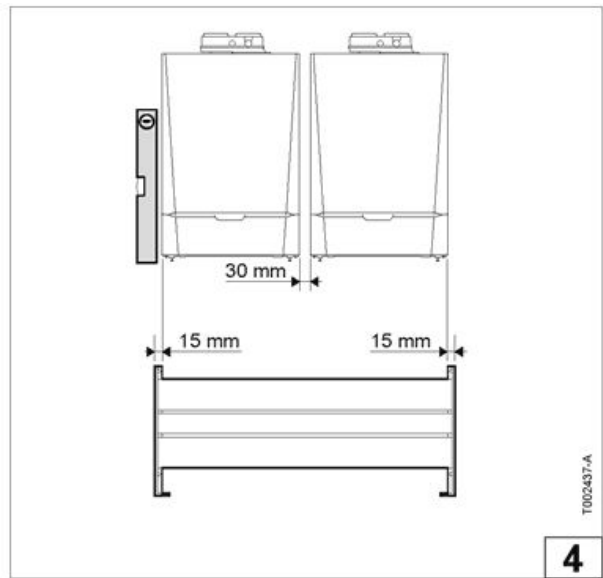
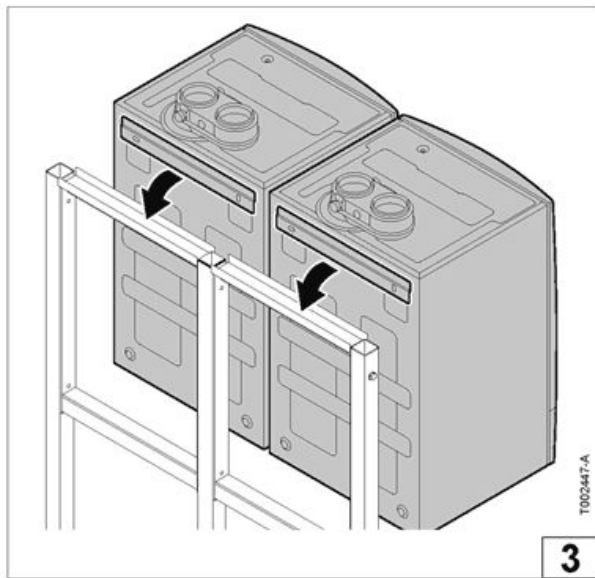
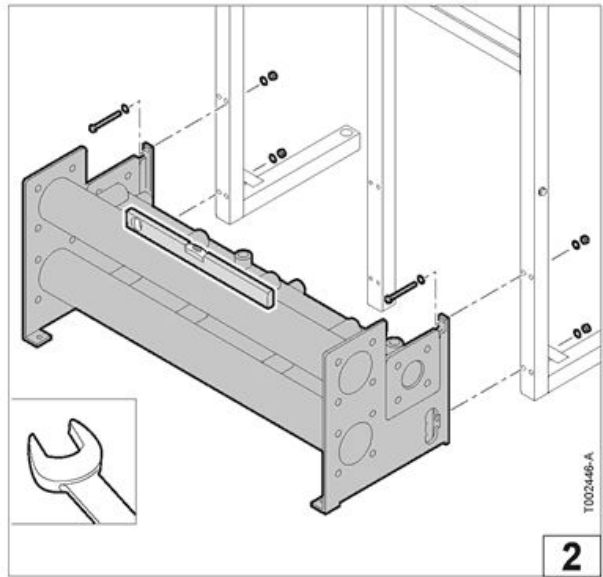
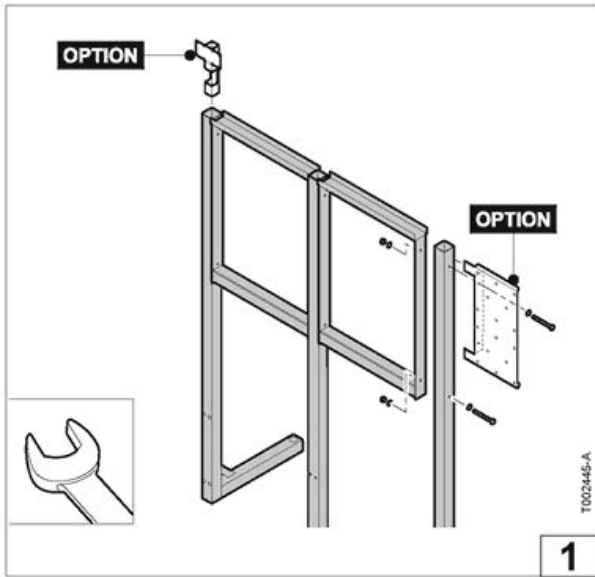
OPTION

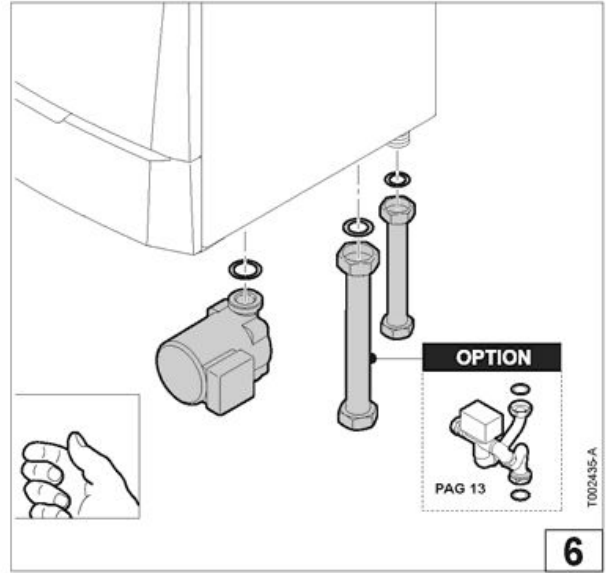
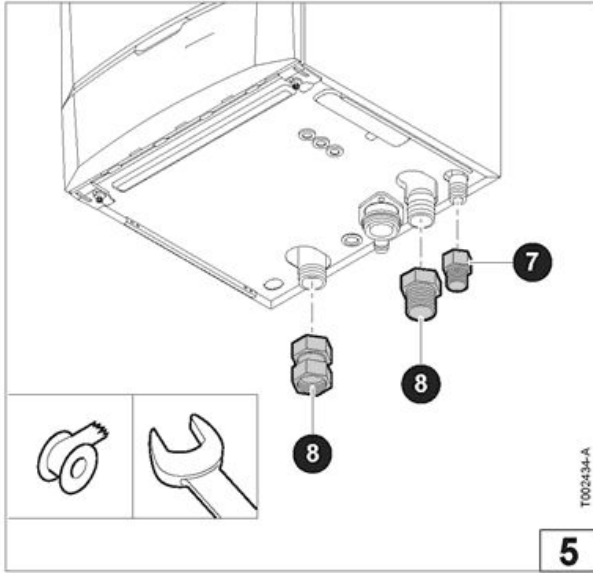


OPTION

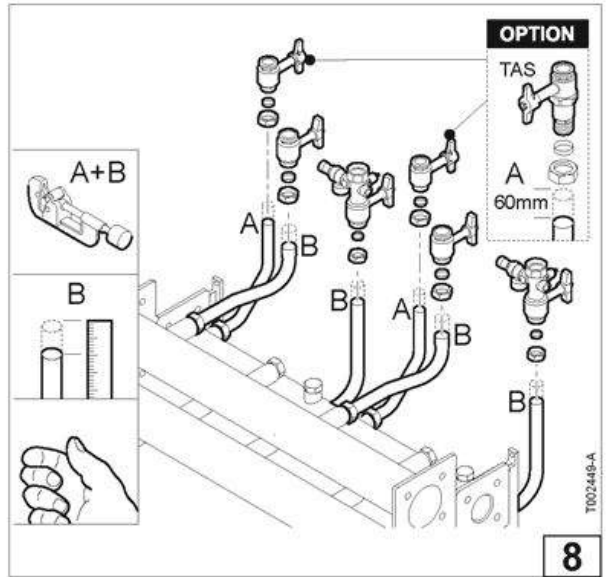
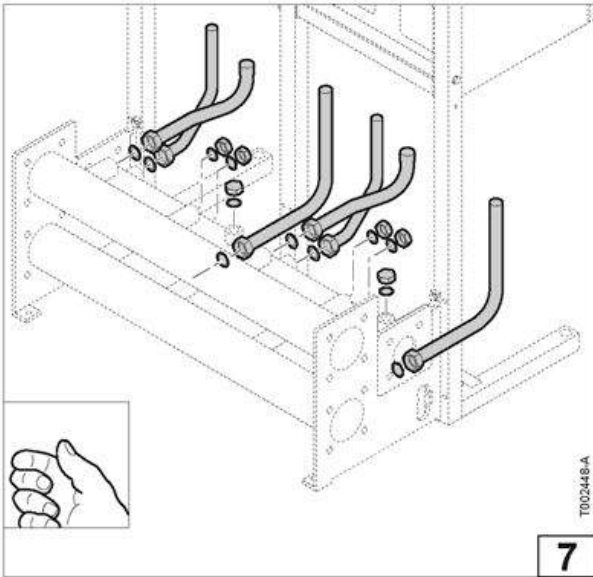


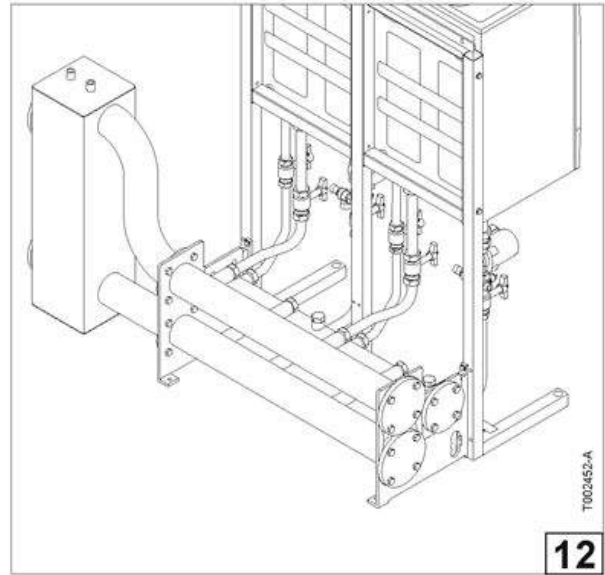
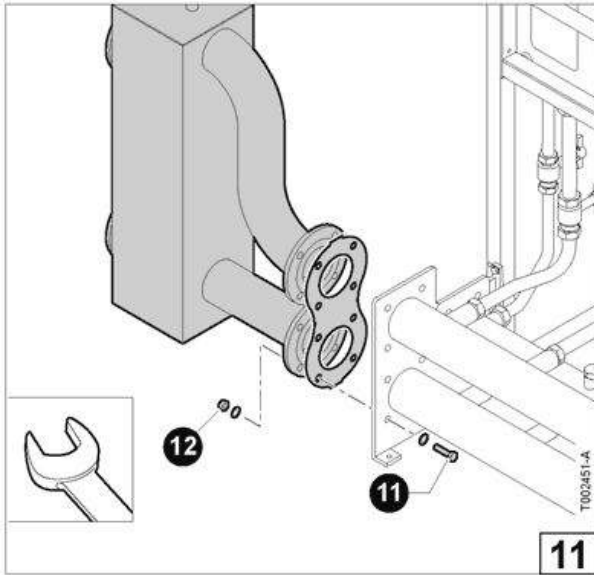
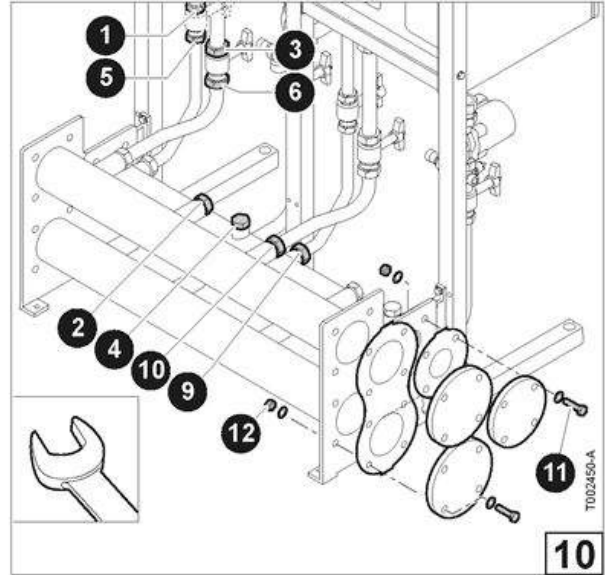
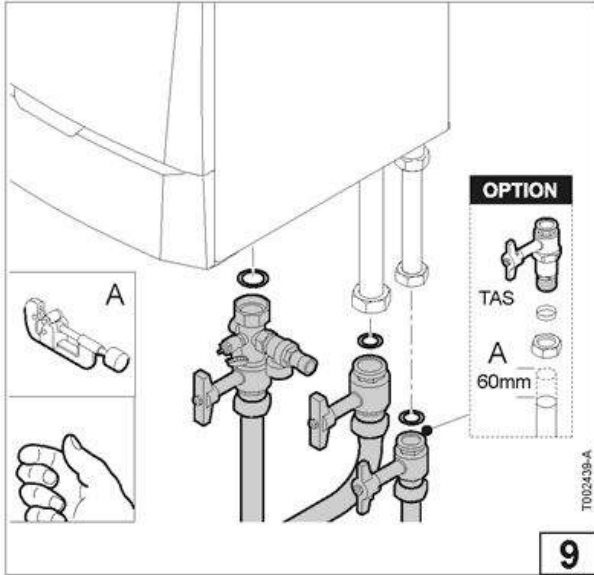
T002444-A





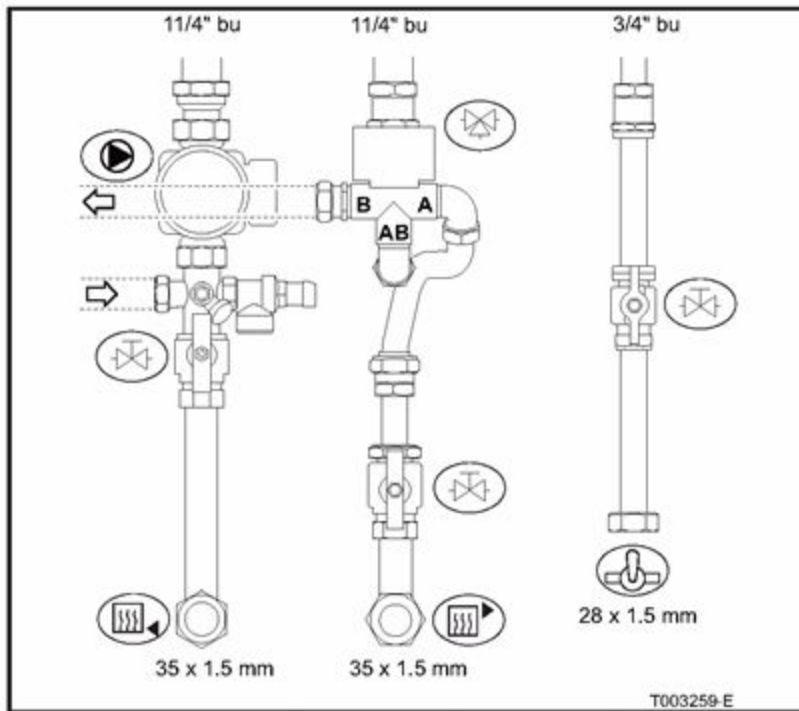
page 11



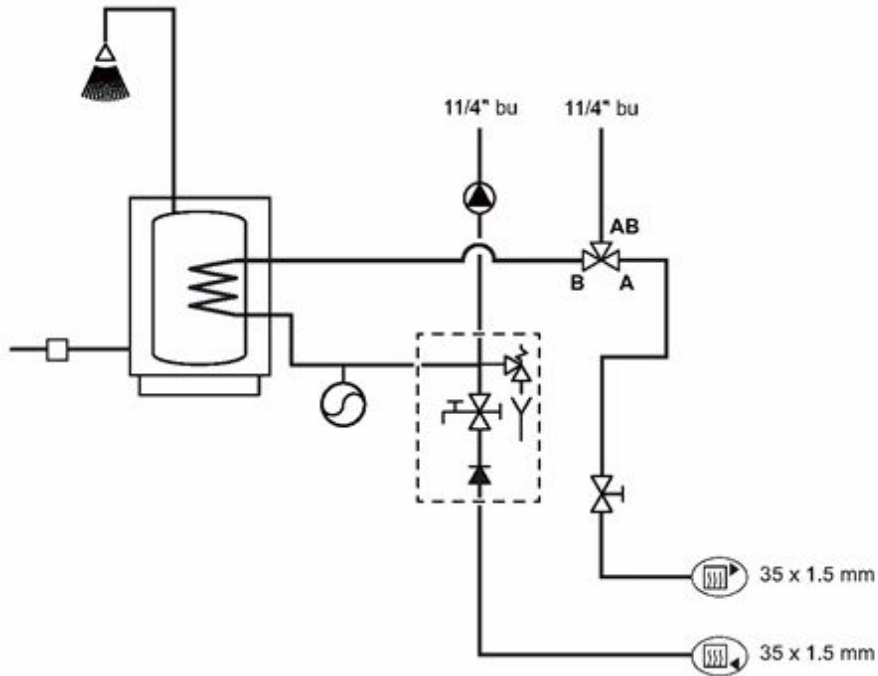


## CALORIFIER CONNECTION

# OPTION







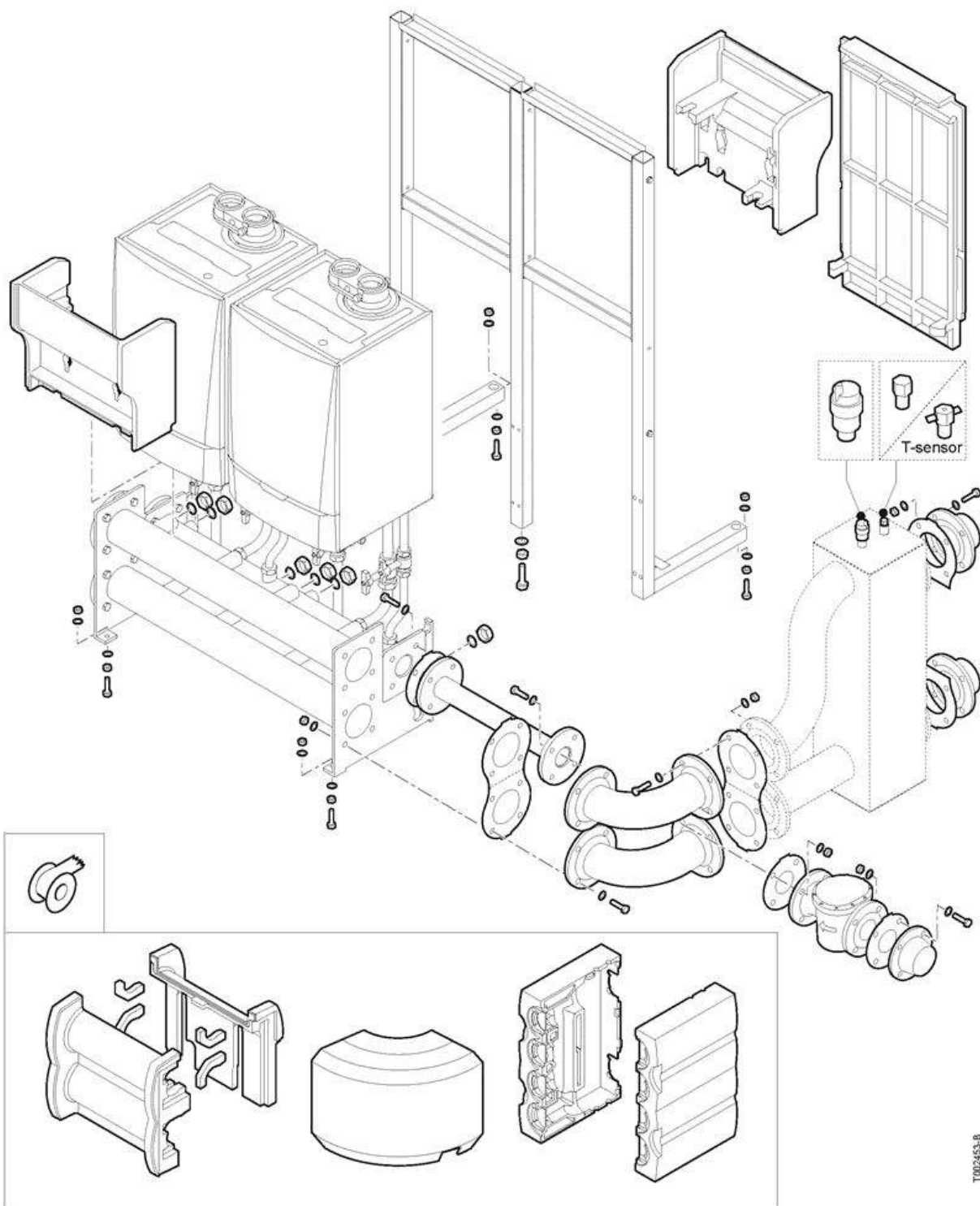
T005470-A

page 13

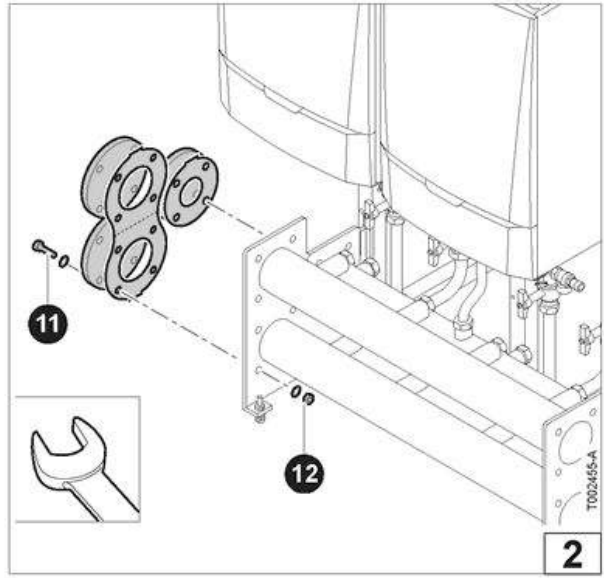
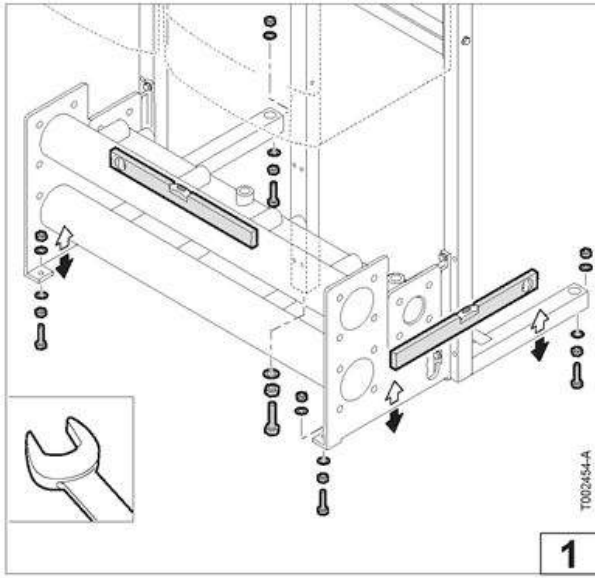
## INSTALLATION OPTIONS

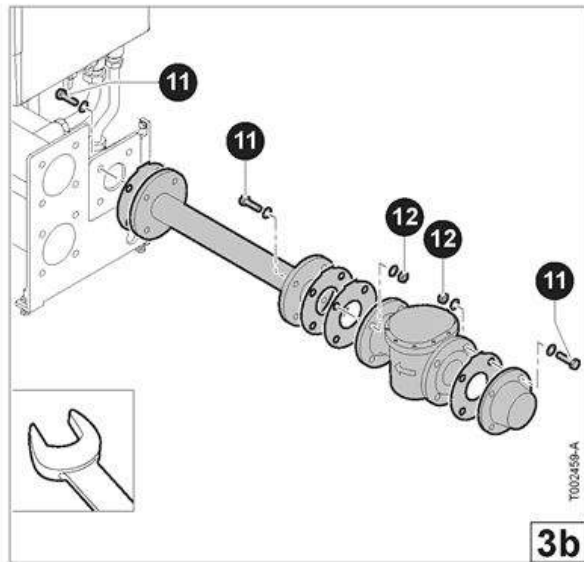
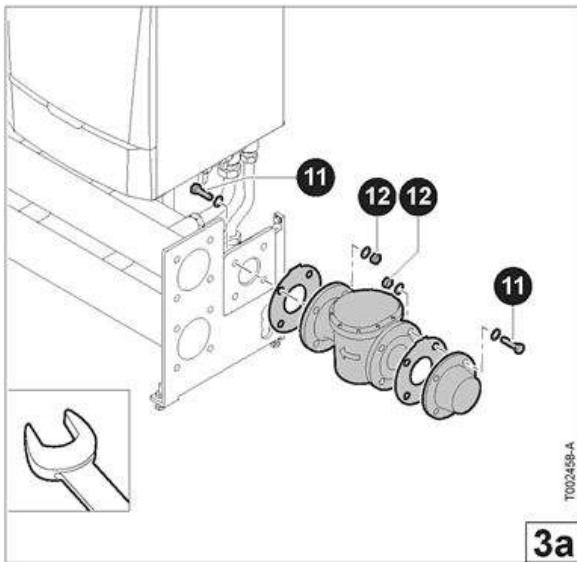
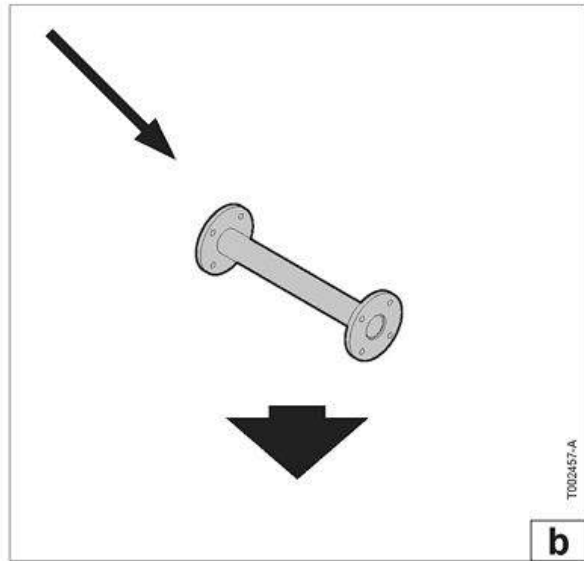
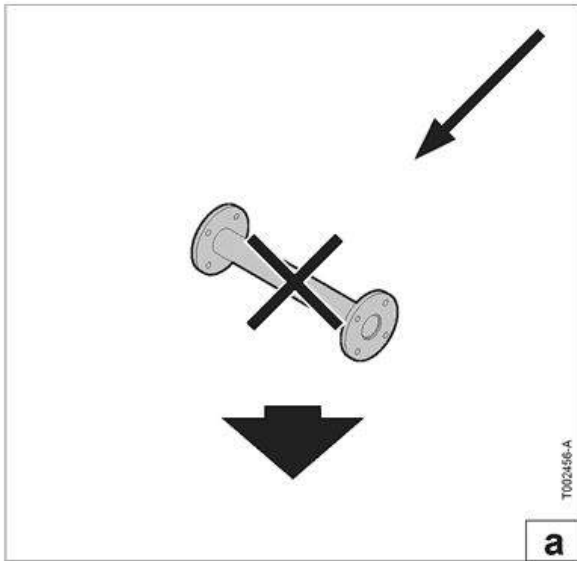
Hand tight

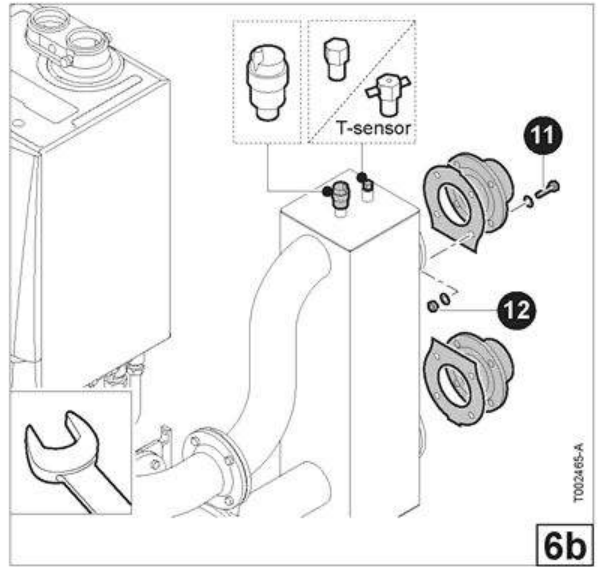
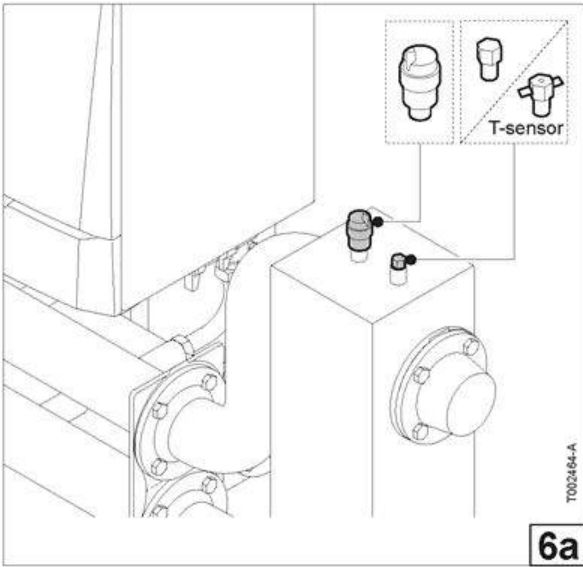
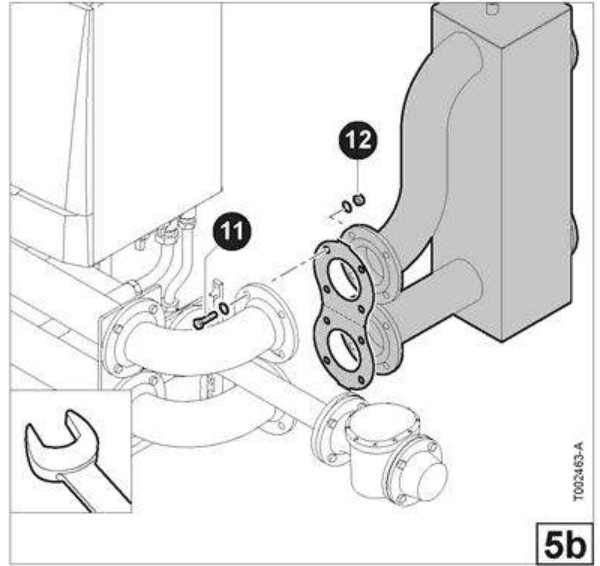
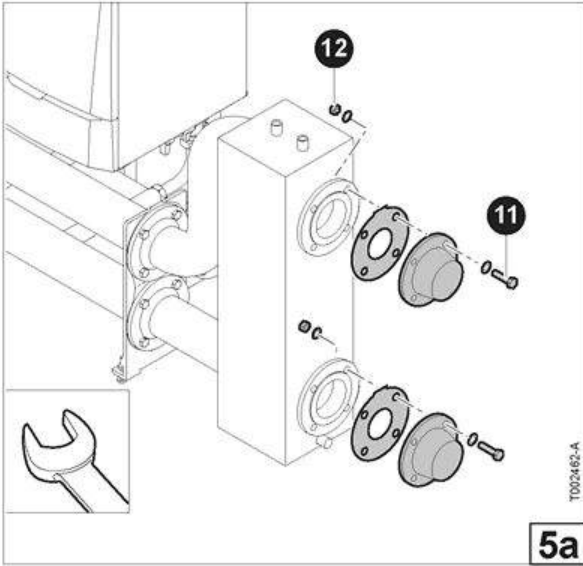
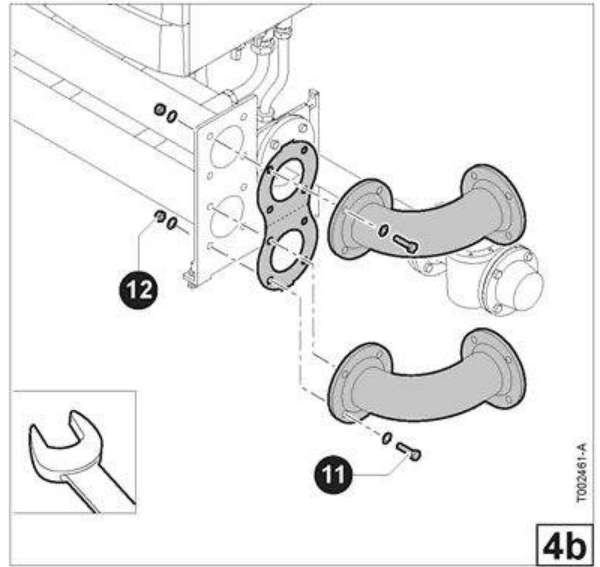
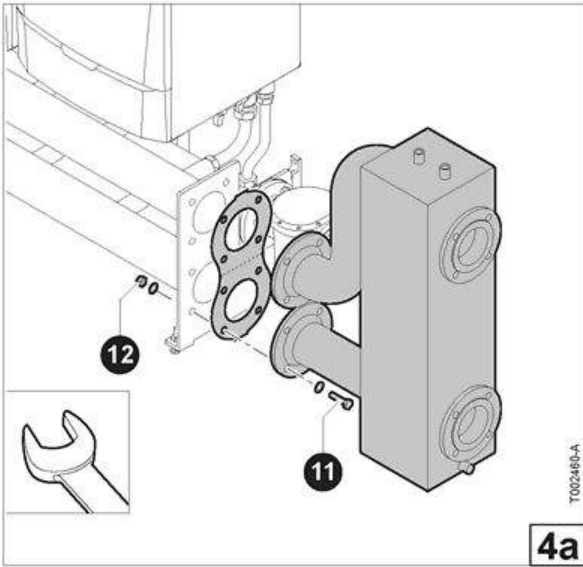
Fasten

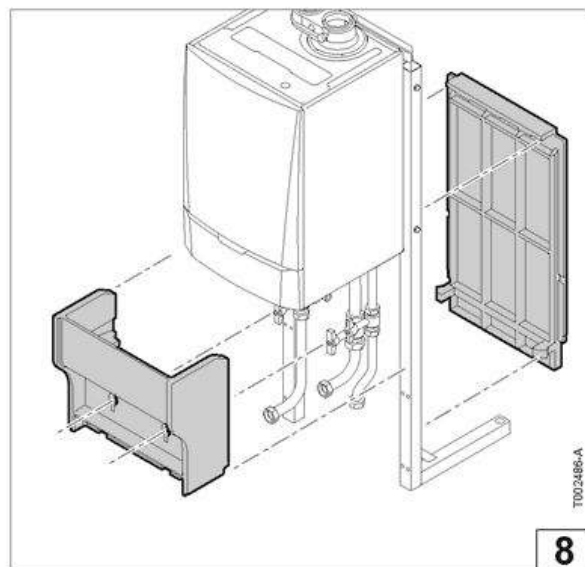
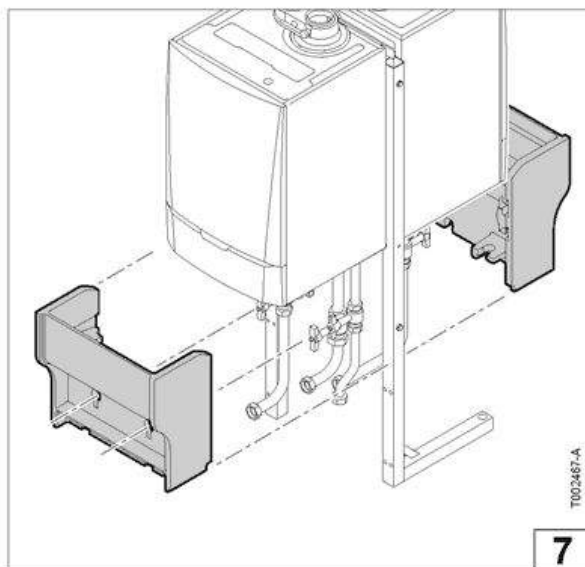
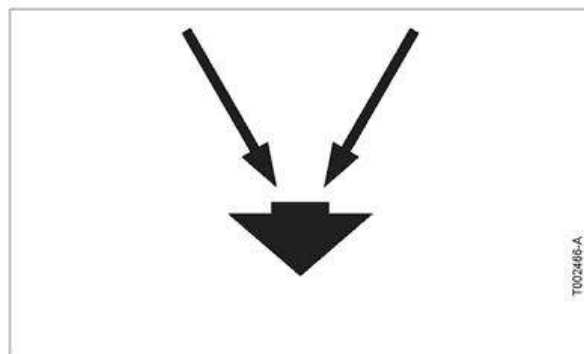


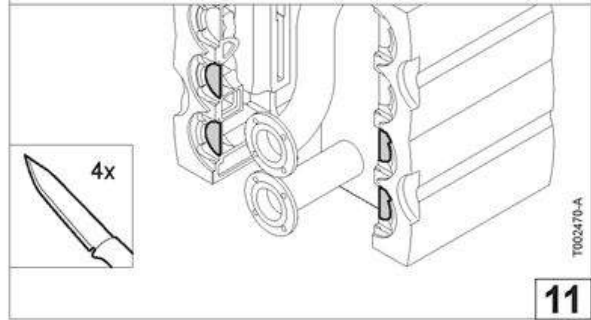
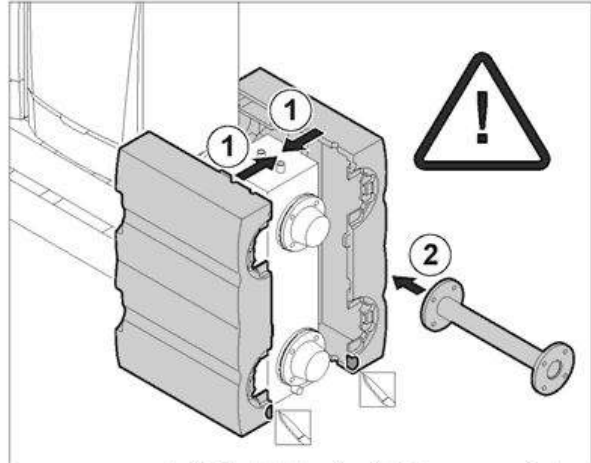
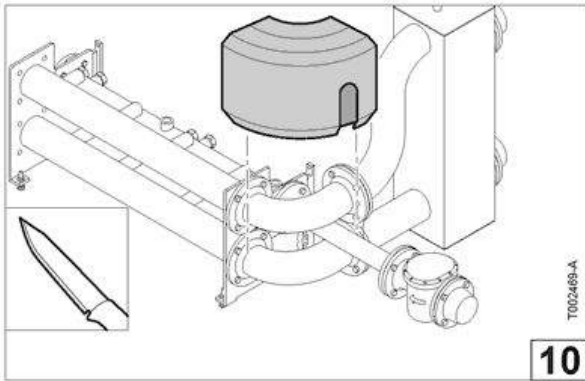
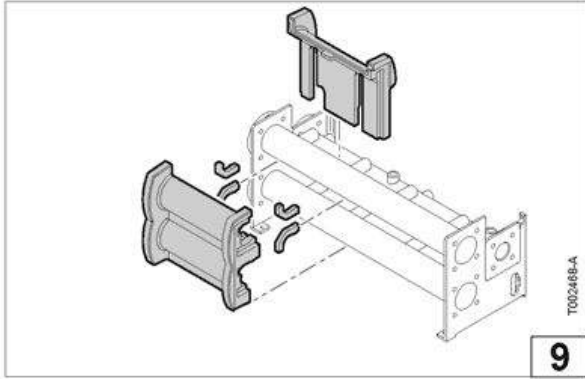
T002453-B











page 17

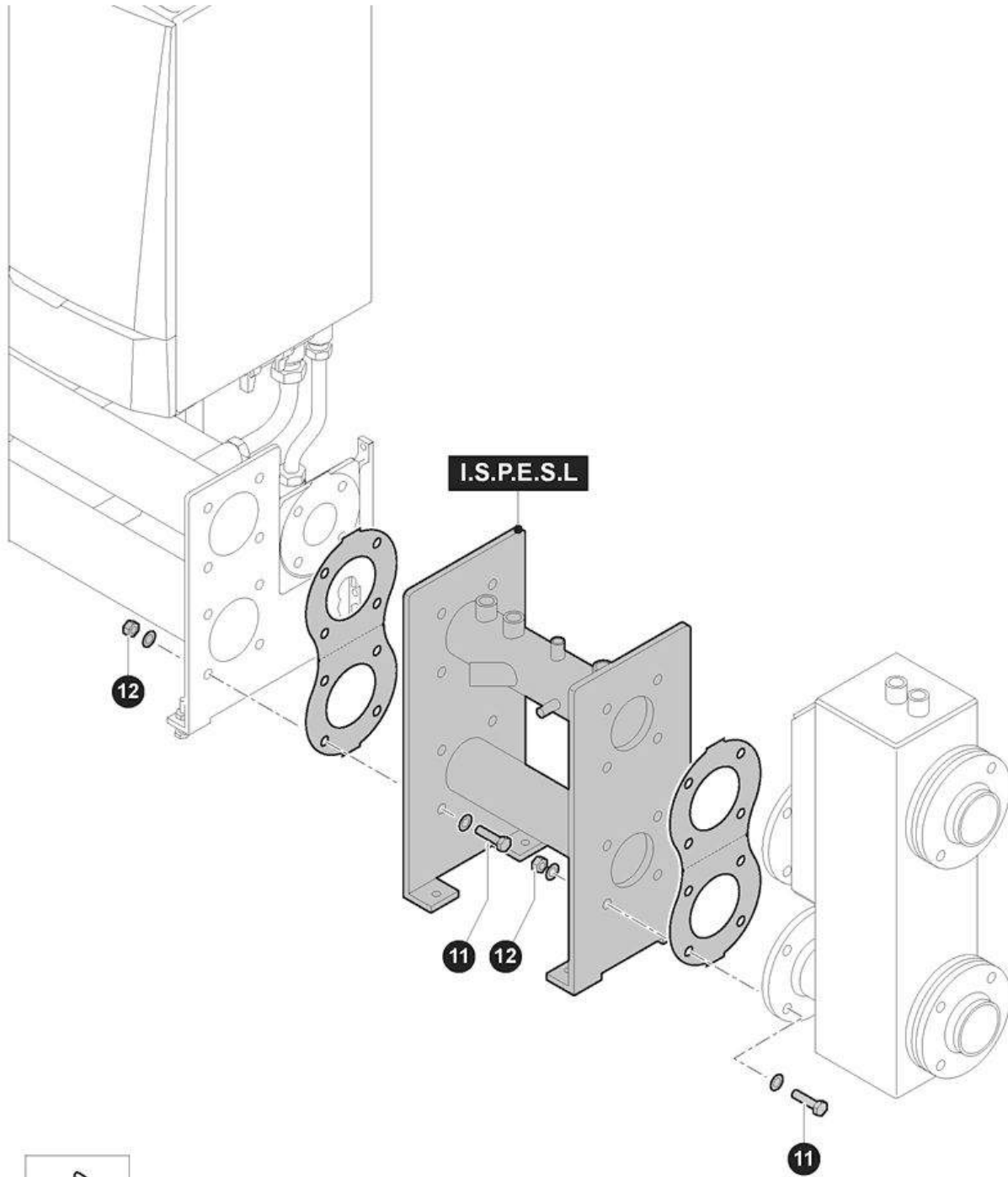
## I.S.P.E.S.L

Hand tight



Fasten





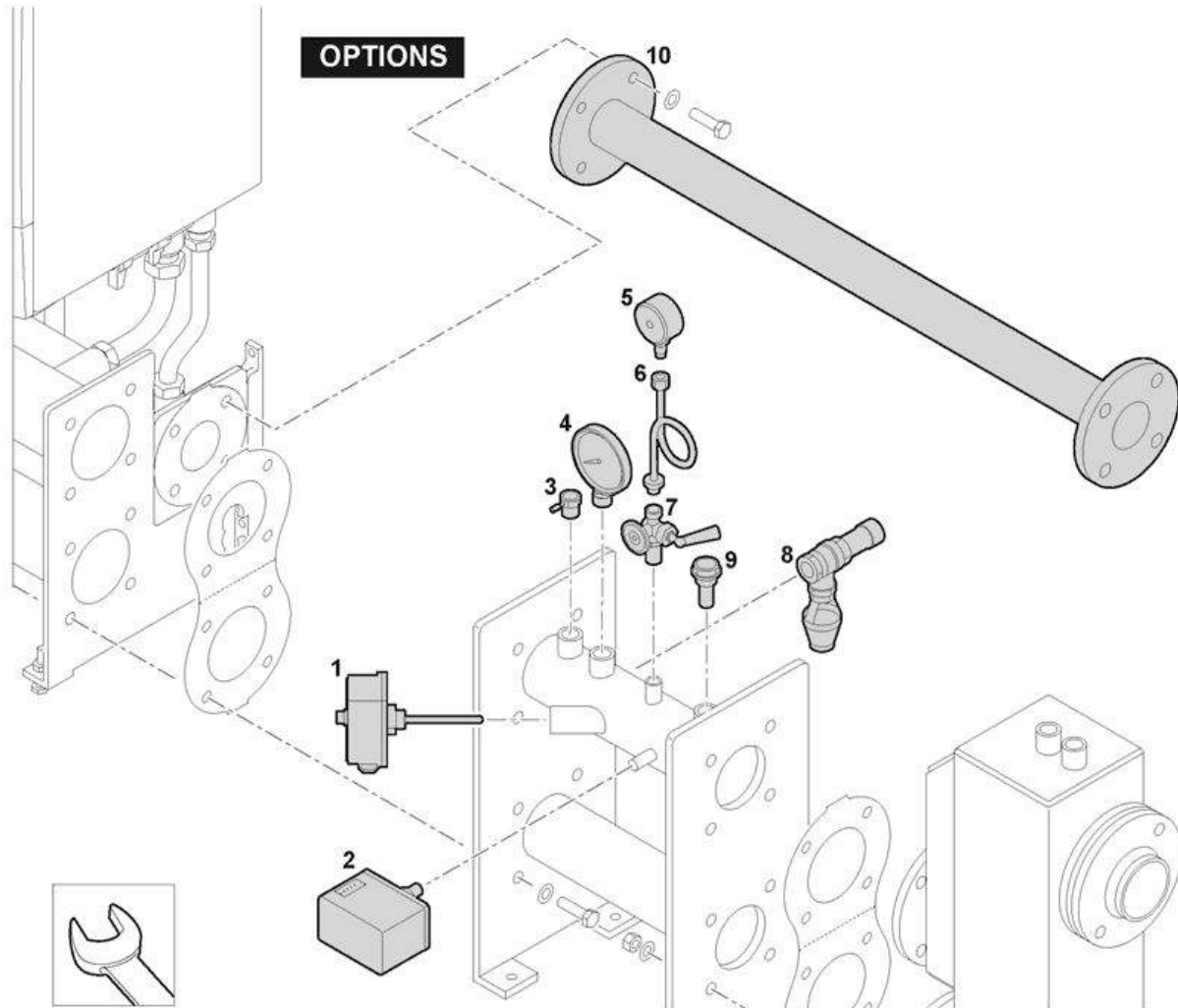
T002471-A



# I.S.P.E.S.L OPTIONS

Hand tight

Fasten



All technical and technological information contained in these technical instructions, as well as any drawings and technical descriptions supplied, remain our property and shall not be multiplied without our prior consent in writing.

Ours is a policy of continuous development. We reserve the right to alter specifications without prior notification.

Subject to alterations

125670 - v.01 - 30012014



page 20