

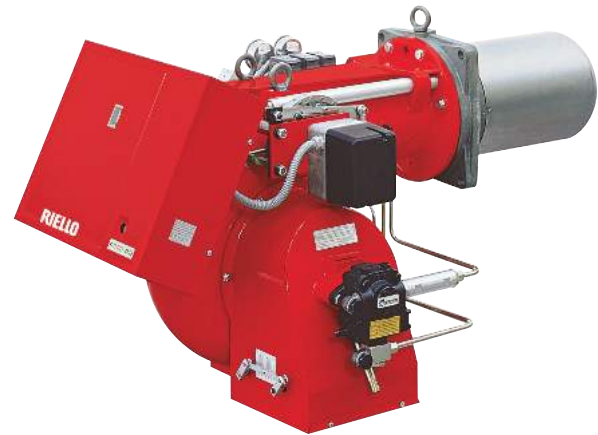
PRESS P/G SERIES

The PRESS P/G series of burners covers a firing range from 415 to 5340 kW.

Setting can be "two stage progressive" or, alternatively, "modulating" with the installation of a PID logic regulator and respective probes, which guarantees a turn down ratio of 3:1.

The versatility of this range makes the burner well suited for use on commercial or industrial applications where the load factor is subject to wide variations over a short period of time.

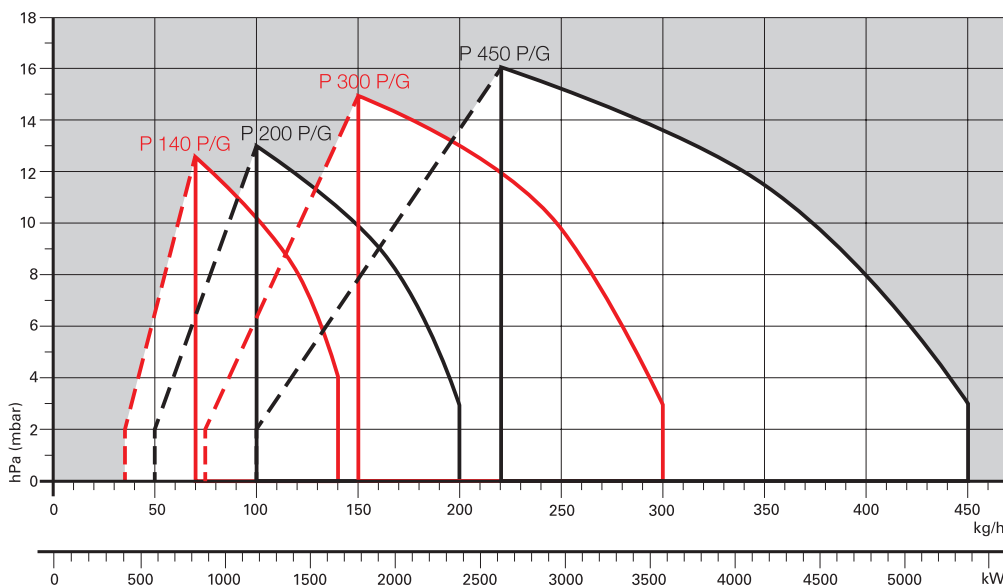
Simplified maintenance is achieved by Riello designed slide bar system, which allows easy access to all of the essential components of the combustion head.



LIGHT OIL

P 140 P/G	415/830	÷	1660	kW
P 200 P/G	590/1185	÷	2370	kW
P 300 P/G	890/1780	÷	3560	kW
P 450 P/G	1190/2670	÷	5340	kW

FIRING RATES



Useful working field for choosing the burner

Modulation range

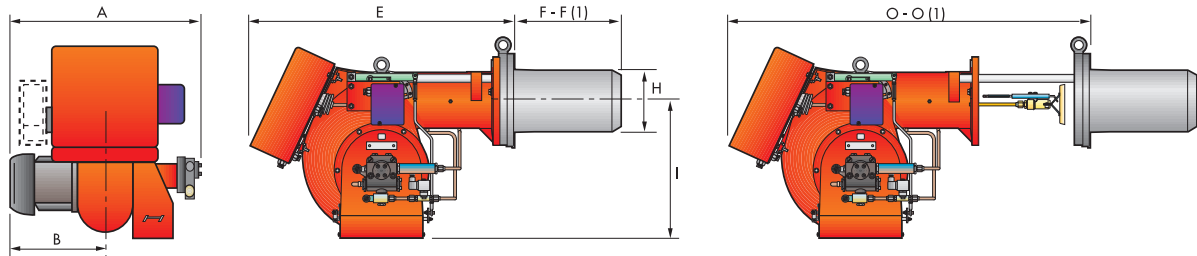
Test conditions conforming to EN267
 Temperature: 20°C
 Pressure: 1013,5 mbar
 Altitude: 0 m a.s.l.

Modulating Light Oil Burners

PRESS P/G SERIES

Overall dimensions (mm)

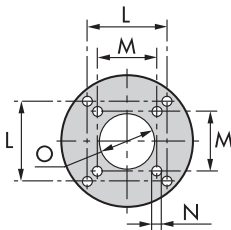
BURNER



MODEL	A	B	E	F - F (1)	H	I	O - O (1)
▶ P 140 P/G	765	365	890	363 - 473	222	467	1250 - 1360
▶ P 200 P/G	796	396	890	391 - 501	250	467	1280 - 1390
▶ P 300 P/G	858	447	1000	444 - 574	295	496	1440 - 1570
▶ P 450 P/G	950	508	1070	476 - 606	336	525	1546 - 1676

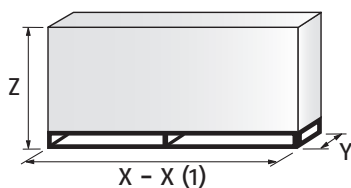
(1) Length with extended combustion head.

BURNER - BOILER MOUNTING FLANGE



MODEL	L	M	N	O
▶ P 140 P/G	260	230	M14	225
▶ P 200 P/G	260	-	M16	255
▶ P 300 P/G	260	-	M18	300
▶ P 450 P/G	310	-	M20	340

PACKAGING



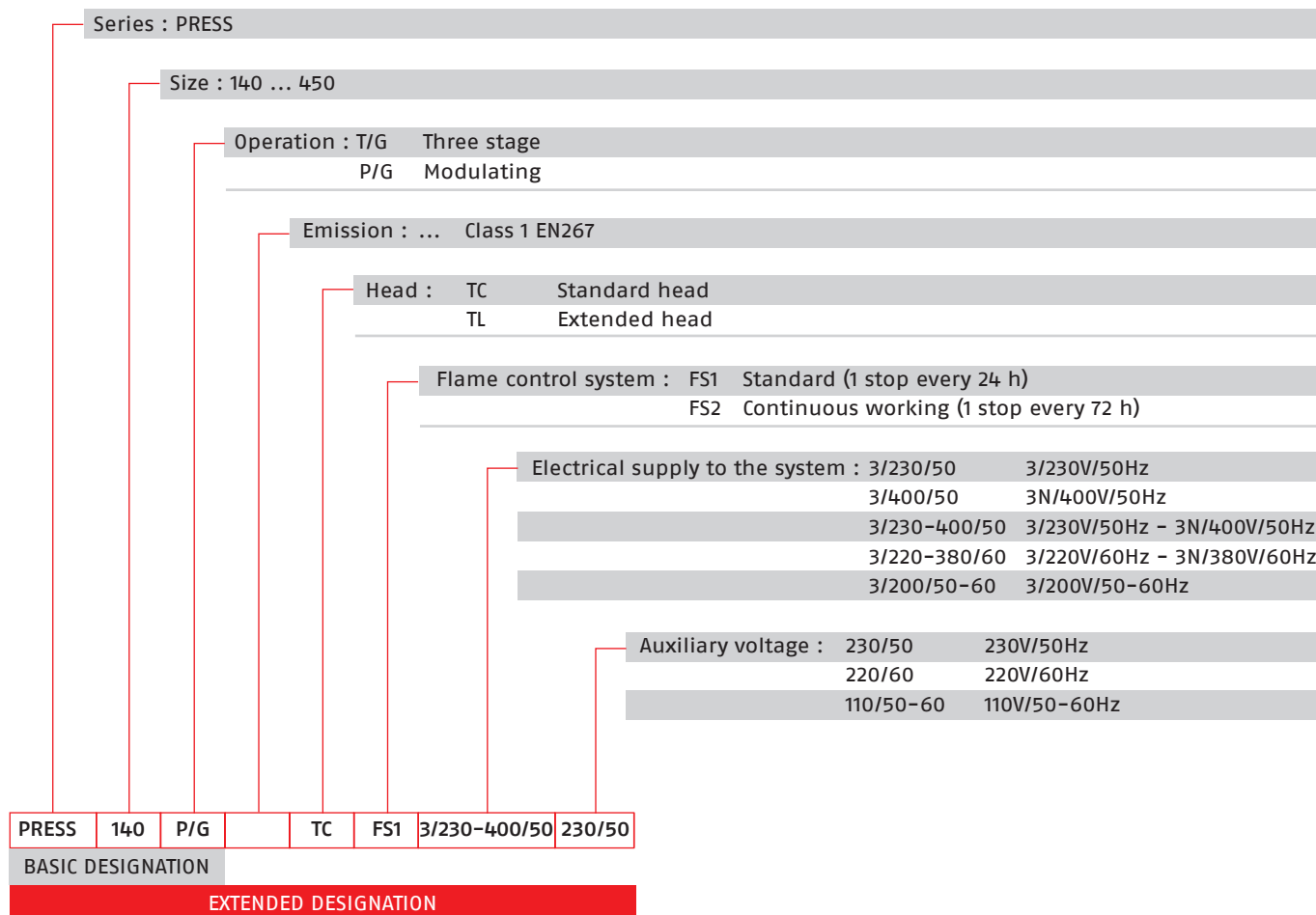
MODEL	X - X (1)	Y	Z	kg
▶ P 140 P/G	1740	990	950	130
▶ P 200 P/G	1740	990	950	220
▶ P 300 P/G	2040	1180	1125	238
▶ P 450 P/G	2040	1180	1125	300

(1) Length with extended combustion head.

PRESS P/G SERIES

Specification

DESIGNATION OF SERIES



Specification

STATE OF SUPPLY

Monoblock forced draught oil burner, two stage progressive or modulating operation, with a kit, fully automatic, made up of:

- Air suction circuit
- Fan with forward curved blades high performance pressure levels
- Air damper for air setting and automatic oil output regulator controlled by a servomotor with variable cam
- Starting motor at 2850rpm, three-phase 400V with neutral, 50Hz
- Combustion head, that can be set on the basis of the required output, fitted with:
 - stainless steel end cone, resistant to corrosion and high temperatures
 - ignition electrodes
 - flame stability disk
- Gears pump for high pressure fuel supply, fitted with:
 - filter
 - pressure regulator
 - connections for installing a pressure gauge and vacuumeter
 - internal by-pass for single pipe installation
- Valve unit with a double oil safety valve on the output circuit and double safety valve on the return circuit
- Safety oil pressure switch for stop the burner in the case of problems on return circuit
- Photocell for flame detection
- Burner safety control box, fitted with control functions for the correct positioning of the servomotor and possibility of post-ventilation by just changing the electric wiring
- Flame inspection window
- Slide bars for easier installation and maintenance
- Protection filter against radio interference
- IP X0D (IP 40) electric protection level.

Standard equipment:

- 2 flexible pipes for connection to the oil supply network
- 2 nipples for the connection to the pump
- wiring looms fittings for electrical connections
- 4 screws for fixing the burner flange to the boiler
- 2 slide bar extensions (for the extended head models of P 300 P/G e P 450 P/G)
- 1 star delta starter (on models where provided)
- Instruction handbook for installation, use and maintenance
- Spare parts catalogue.

PRESS P/G SERIES

Available models

CODE	MODEL	HEAT OUTPUT		TOTAL ELECTRICAL POWER (kW)	CERTIFICATION	NOTE
		(kW)	(kg/h)			
3476867	PRESS 140 P/G TC FS1 3/230-400/50 230/50	415/830÷1660	35/70÷140	5.2	CE-0441/B	
3476868	PRESS 140 P/G TL FS1 3/230-400/50 230/50	415/830÷1660	35/70÷140	5.2	CE-0441/B	
3477767	PRESS 200 P/G TC FS1 3/230-400/50 230/50	590/1185÷2370	50/100÷200	5.3	CE-0441/B	
3477768	PRESS 200 P/G TL FS1 3/230-400/50 230/50	590/1185÷2370	50/100÷200	5.3	CE-0441/B	
3478941	PRESS 300 P/G TC FS1 3/230-400/50 230/50	890/1780÷3560	75/150÷300	10.6	CE-0441/B	
3478942	PRESS 300 P/G TL FS1 3/230-400/50 230/50	890/1780÷3560	75/150÷300	10.6	CE-0441/B	
3478943	PRESS 300 P/G TC FS1 3/230/50 230/50	890/1780÷3560	75/150÷300	10.6	CE-0441/B	(1)
3478944	PRESS 300 P/G TL FS1 3/230/50 230/50	890/1780÷3560	75/150÷300	10.6	CE-0441/B	(1)
3478945	PRESS 300 P/G TC FS1 3/400/50 230/50	890/1780÷3560	75/150÷300	10.6	CE-0441/B	(1)
3478946	PRESS 300 P/G TL FS1 3/400/50 230/50	890/1780÷3560	75/150÷300	10.6	CE-0441/B	(1)
3479369	PRESS 450 P/G TC FS1 3/230/50 230/50	1190/2670÷5340	100/225÷450	18.7	CE-0441/B	(1)
3479370	PRESS 450 P/G TL FS1 3/230/50 230/50	1190/2670÷5340	100/225÷450	18.7	CE-0441/B	(1)
3479371	PRESS 450 P/G TC FS1 3/400/50 230/50	1190/2670÷5340	100/225÷450	16.9	CE-0441/B	(1)
3479372	PRESS 450 P/G TL FS1 3/400/50 230/50	1190/2670÷5340	100/225÷450	16.9	CE-0441/B	(1)

(1) Star-delta starting, as standard equipment

Net calorific value: 11,8 kWh/kg - 10200 kcal/kg - Viscosity at 20°C: 4÷6 mm²/s (cSt)

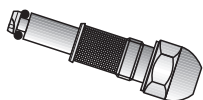
The burners of PRESS series are in according to 2004/108 - 2006/95) - 2006/42 EC Directive and EN 267 Norm.

Modulating Light Oil Burners

PRESS P/G SERIES

Burner accessories

Return nozzles



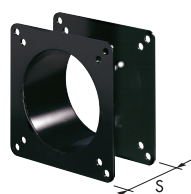
The following list shows the features and codes on the basis of the maximum required fuel output.

NOTE: each burner needs N° 1 nozzle.

BURNER	RATED OUTPUT kg/h (*)	NOZZLES BERGONZO B5 45° WITHOUT "SA" NEEDLE CODE	NOZZLES FLUIDICS N2 45° WITHOUT NEEDLE CODE
▶ P 140 P/G	70	3009303	3045471
▶ P 140 P/G	80	3009305	3045472
▶ P 140 P/G	90	3009307	3045473
▶ P 140 - 200 P/G	100	3009310	3045475
▶ P 140 - 200 P/G	125	3009312	3045477
▶ P 200 - 300 P/G	150	3009314	3045479
▶ P 200 - 300 P/G	175	3009316	3045481
▶ P 200 - 300 P/G	200	3009318	3045483
▶ P 300 - 400 P/G	225	3009320	3045485
▶ P 300 - 400 P/G	250	3009322	3045487
▶ P 300 - 400 P/G	275	3009324	3045489
▶ P 300 - 400 P/G	300	3009326	3045491
▶ P 450 P/G	325	3009328	3045493
▶ P 450 P/G	350	3009330	3045495
▶ P 450 P/G	375	3009332	3045497
▶ P 450 P/G	400	3009334	3045499
▶ P 450 P/G	425	3009336	3045500
▶ P 450 P/G	450	3009338	3045501

(*) Nozzle rated delivery is referred to atomised pressure

Spacer kit

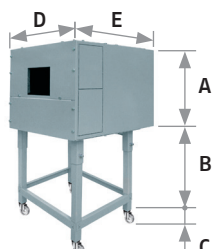


If burner head penetration into the combustion chamber needs reducing, varying thickness spacers are available, as given in the following list.

BURNER	SPACER THICKNESS S (mm)	KIT CODE
▶ P 140 P/G	102	3000722
▶ P 200 P/G	102	3000722
▶ P 300 P/G	130	3000723
▶ P 450 P/G	130	3000751

Burner accessories

Sound proofing box



If noise emission needs reducing even further, sound-proofing boxes are available. In case of generator heights, where a lower dimension "B" is required, ask for the Box Support Kit code 20065135. The useful dimensions are 40 mm less than the total dimensions indicated in the table (A, D, E). Not suitable for outdoor use.

BURNER	BOX TYPE	A (mm)	B (mm) min-max	C (mm)	D (mm)	E (mm)	[dB(A)] (*)	BOX CODE
▶ P 140 P/G P 200 P/G	C4/5	850	160 - 980	110	980	930	10	3010404
▶ P 300 P/G P 450 P/G	C7	1255	160 - 980	110	1140	1345	10	3010376

(*) Average noise reduction according to EN 15036-1 standard

Accessories for modulating operation



To obtain modulating operation, the PRESS P/G series of burners requires a regulator.

BURNER	REGULATOR TYPE	REGULATOR CODE
▶ P 140 - 200 - 300 - 450 P/G	RWF 40	3010211



The relative temperature or pressure probes fitted to the regulator, must be chosen on the basis of the application.

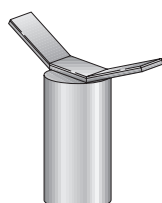
BURNER	PROBE TYPE	RANGE (°C) (bar)	PROBE CODE
▶ P 140 - 200 - 300 - 450 P/G	Temperature PT 100	-100 ÷ 500°C	3010110
▶ P 140 - 200 - 300 - 450 P/G	Pressure 4 ÷ 20 mA	0 ÷ 2,5 bar	3010213
▶ P 140 - 200 - 300 - 450 P/G	Pressure 4 ÷ 20 mA	0 ÷ 16 bar	3010214
▶ P 140 - 200 - 300 - 450 P/G	Pressure 4 ÷ 20 mA	0 ÷ 25 bar	3090873



Depending on the servomotor fitted to the burner, a three-pole potentiometer (1000 Ω) can be installed to check the position of the servomotor.

BURNER	POTENTIOMETER KIT CODE
▶ P 140 - 200 - 300 - 450 P/G	3010021

Burner support



For easier maintenance, a mobile burner support has been designed, which means the burner can be dismantled without the need of forklift trucks.

BURNER	SUPPORT CODE
▶ P 300 P/G - P 450 P/G	3000731